

ERIBÉ®

KNITWEAR DESIGN • SCOTLAND



COLLECTION 2024 / 2025



Jumpers for joy!



In April 2023, my husband Dougie and I had the opportunity to make a road-trip through Australia to visit and meet with ERIBÉ stockists. We spent two weeks with the wonderful Kim Rossouw of 'Le Bureau' (our Australian sales agents) and drove from Sydney to Melbourne visiting Canberra and many fascinating small rural towns along the way. We also spent three days exploring Tasmania. Our expedition allowed us to connect with retail stockists and meet enthusiastic fans of the ERIBÉ brand.

Each retailer curated their store with a distinctly unique flair, showcasing their individuality and taste, and without exception they knew and understood their customers well. We were warmly welcomed everywhere and able to draw inspiration and very useful knowledge from our meetings.

We also learned the value of heritage in Australia where a blend of 200 years of white settlers and a 50,000-year-old indigenous legacy painted a picture of one of the youngest yet oldest living historic cultures globally. This reflection sparked thoughts about our own Scottish heritage and the creative contributions we aspire to make for the future.

Guided by this historical perspective, it was straight back to designing the new collections when we arrived home in May. Working with Miho McEwan-Watt, our senior designer, Scotland's rich tapestry of artists, craftspeople, and our natural surroundings influenced us as we perfected the design and colour offerings for the season ahead. I am so excited by this collection and I hope you will love our 24/25 brochure.

Our collections this year celebrate a heartfelt connection to our Scottish roots and our commitment to crafting joyful knitwear for the world-wide community of ERIBÉ stockists and fans. This is the essence of ERIBÉ.

I wish you a joyful 2024!

Rosemary Eribé

SUSTAINABILITY

We are reducing our carbon footprint several steps at a time...

From the very beginning (1986), ERIBÉ has been mindful of the environment, choosing to use the best ecological natural yarns and promoting sustainable fashion with every collection. Our colourful knitwear never goes out of style and in a world of throw-away clothing, this is slow fashion at its very best - our products are designed to last.

Embedded in the 38 year ERIBÉ culture is the decision to re-use, recycle, share and give away. This started when money was tight and waste was unacceptable. Very few customers complained when they received old and used boxes – after all it's what's in the boxes that gives the delight!

Below are just some of the steps we have taken to reduce our environmental impact across all areas of the business. We are constantly seeking to improve our sustainability practice and recently carried out a Net Zero report to help us achieve our environmental goals.



RAW MATERIALS

We use only 100% natural wool yarn which breaks down into its component parts at the end of its life and can even be composted. The many unique properties of natural wool make it one of the best sustainable fibres:

- 100% Natural
- Biodegradable
- Renewable and Sustainable
- Strong and Durable
- Low Carbon Impact
- Recyclable



MANUFACTURING

We use green energy produced by solar panels to power our factory.

Our state-of-the-art washing machines use minimal water and soft Scottish water reduces the amount of chemicals required. The high spin cycle has reduced drying time.

Faulty garments are mended wherever possible to prevent re-making.

Our suppliers and manufacturing partners are chosen for their high environmental standards and ethical working practices.



PACKAGING

We use pins and cotton strings to attach swing tags rather than plastic kimbles.

We have replaced our plastic garment bags with biodegradable bags made from wood pulp.

We re-use the boxes that our raw materials are delivered in. They go back and forward many times and are literally falling apart before we discard them!



REDUCING WASTE

We only make to order – this way no excess is produced that then has to be sold off cheaply or sent to landfill.

Knitting is much kinder than cut & sew in woven fabrics – almost all the raw material is used as each garment panel is knitted to size, leaving no waste.



RE-USE & RECYCLE

Faulty panels are either re-wound back into yarn for knitting or are sold cheaply to a local small business who uses them to make colourful dog coats!

We use surplus yarn and discontinued colours to make scarves and garments. These are sold at a discounted price or given to charities.



DESIGN

Our timeless knitwear is designed to outlast short-lived fashion trends. We choose to create only one collection per year and we carefully build on proven designs with new colours and only add new styles we know our customers will love.

Everything, from our yarn to our buttons and trimmings, are chosen to have as little impact on the planet as possible.

For more information on what makes wool one of the best fibres for sustainable, low impact clothing visit: www.woolmark.com/environment/our-vision/ www.woolmark.com/environment/fashions-environmental-impact/

OUR YARNS

ERIBÉ is all about the people involved; from our wool producers, spinners, mills and suppliers, to our agents, buyers and customers. Great attention is paid to every person involved in our supply chain to ensure the highest standards of ethical production.

All our woollen yarns are:

Ethically sourced from top producers who ensure our yarn is treated with passion and care at every stage of the production process

Mulesing free - "No Fly Strike"

Follow the EU REACH and OEKO-TEX® dye regulations

RWS (Responsible Wool Standard) and Control Union certified



The Responsible Wool Standard (RWS) aims to improve the welfare of sheep and the land they graze on. It requires all sites from wool farmers to the seller in the final business-to-business transaction, to be certified.

RWS farmers must meet animal welfare, land management, and social requirements.



**KIND TO
ANIMALS**



**ENVIRONMENTAL
& SUSTAINABLE**



**QUALITY
ASSURED**



TRACEABILITY



**SOCIALLY
RESPONSIBLE**



**NON-MULESED
WOOL**

MERINO LAMBSWOOL

The Merino Lambswool we use for our Alpine, Stobo, Corry, Montrose and Stoneybrek styles is spun in Yorkshire by a family-owned company who have been spinning yarn for over 200 years. The fibre is dyed before it is spun - a gentle process that gives a superior colour result and finished handle. They source natural fibres with the highest standards of animal welfare and take the issues of sustainability seriously. Their Yorkshire mill uses technology to reduce power usage and all wood, paper, plastic, metal and fibre waste is recycled.

SUPERFINE MERINO LAMBSWOOL

Kinross garments are made with a premium Scottish spun, fully traceable, and guaranteed non-mulesed RWS Certified superfine merino lambswool yarn. It is so soft and lightweight, it almost feels like cashmere. The spinner uses water drawn from nearby Loch Leven – the dyes used are environmentally friendly, so the water used is cleaned and returned to the bird and fish nature reserve loch once dyeing is complete.

SOFT SHETLAND

Our Soft Shetland collection is knitted in a premium quality 100% Soft Shetland Wool spun in Yorkshire from New Zealand wools produced by suppliers who operate very high welfare practices in the farming of their sheep which also means they are mulesing-free. All dyes and chemicals used in the manufacturing process conform to the latest EU REACH and OEKO-TEX® regulations.

For more information on why the many unique properties of wool are better for you and the planet visit: www.campaignforwool.org/about-wool/ www.campaignforwool.org/whywoolmatters/



COLLECTION 2024 / 2025



Alpine

P10 - P23



Stoba

P24 - P31



Conry

WOMENS P32 - P45
MENS P72 - P79



Montrase

P46 - P49



Stoneybrook

WOMENS P51 - P53
MENS P80 - P81



Soft Shetland

WOMENS
P54 - P61



Kinross

P62 - P69



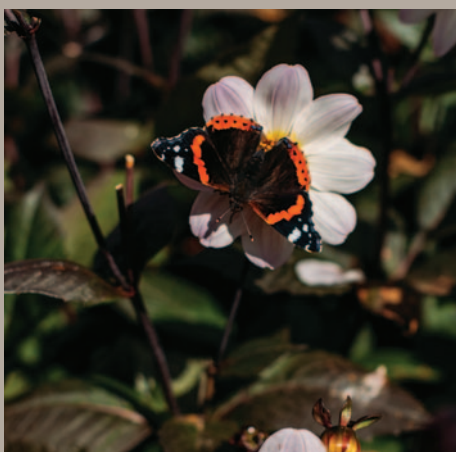
Soft Shetland

MENS
P82 - P89



Accessories

P90 - P111



For our photoshoot this year we used the location of Abbotsford House and its stunning garden and grounds. Abbotsford is only a few miles from us at Melrose and was the residence of Sir Walter Scott, the famous novelist and poet.

Sir Walter Scott is considered a member of the Scottish Enlightenment. This group of influential writers and thinkers included Adam Smith who wrote 'The Wealth of Nations' and Robert Adams who created the neoclassical architecture that dominated our cityscapes from the late eighteenth century. Sir Walter Scott romanticised our history, allowing us to view it from a modern perspective. Abbotsford is celebrated in this year's brochure and provides a beautiful setting to showcase our offerings. We have chosen some of Sir Walter Scott's well known quotes to complement the atmospheric photography created at this wonderful location.

*"Nothing is more completely the
child of art than a garden"*

Sir Walter Scott







Womenswear Collection

2024 / 2025





The ERIBÉ classic! Looking stunning has never been easier.

For 2024 our popular Alpine Collection offers the iconic cardigan and sweater in regular and short lengths as well as an elegant new Alpine Dress and versatile Alpine Cardi-coat. Alpine garments are knitted by a small family-run factory in the EU with merino wool spun in Yorkshire. Challenging to produce, the intricate patterns and 20 gorgeous colourways take months to design.



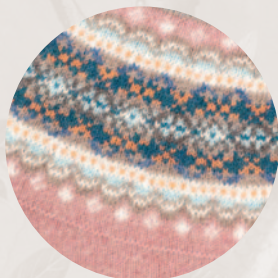
New Alpine colours

2024



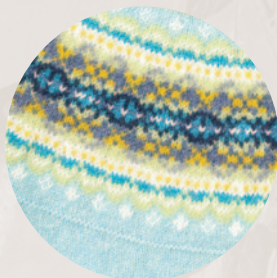
TAURUS

Tastefully classic colours with linen, blues, browns freshened with touches of white for understated elegance.



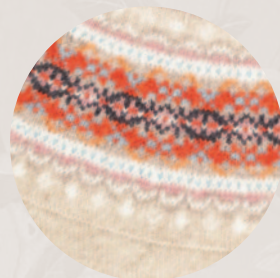
VINTAGE PINK

Romantic, soft and gentle; evoking a bygone era of afternoon teas in English country gardens.



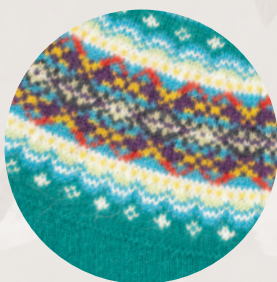
MERMAID

Fresh and energetic colours of rippling water reflecting yellow sunlight and dancing clouds.



CINDY

Feel elegant and sophisticated in pale linen lifted with pops of red and charcoal but softened with vintage pink, pale blue and cream.



TIGERLILLY

A feel-good colourway with fresh, bold colours of sparkling sea green complemented with turquoise, yellow, red and deep aubergine offset with white.



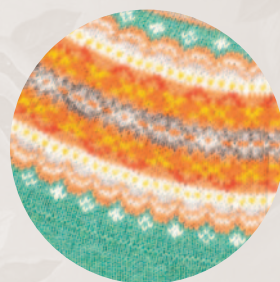
FIGARO

Fresh, sparky and fun, this fashionable colourway commands attention wherever you go. Lime green with blues and touches of white, pink and red. Enjoy!



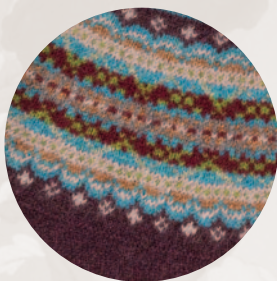
AURORA

Inspired by the Northern Lights, these bright greens, pinks and reds light up this sumptuous dark blue colourway.



KATIE-MORAG

A happy colourway of a tastefully bright bouquet of Spring flowers with soft emerald green, yellows, blended cinnamon tones calmed with soft melange brown.



ESMERALDA

Fairytale mystery of deep, dark colours punctuated by surprise accents of turquoise and moss greens.



PEGASUS

Let your imagination soar to the heavens where Pegasus spreads its wings. This colourway is dark and moody with flashes of bright stars.



HIGHLAND

Evoking the Scottish mountains covered in yellow gorse, ochre bracken and forest greens for highland romance.



POTPOURRI

Smell the blended dried rose petals combined with rich spices in this pretty colourway that hints of the exotic Orient.



KATIE-MORAG

Alpine Sweater (Classic)

Style No: P3974

96% Merino Lambswool 4% Angora

Sizes: XS / S / M / L / XL / XXL

Regular Fit

Fairisle pattern yoke sweater with pattern on hem and cuff, finished with a touch of luxury angora in the yoke for glamour and soft texture. Extra long cuffs to keep your hands warm and with a slightly shaped waist. Available in 20 colours with matching scarves, gloves and beanies.



Alpine Cardigan (Classic)

Style No: C3735

96% Merino Lambswool 4% Angora

Sizes: XS / S / M / L / XL / XXL

Slim Fit

Fairisle pattern yoke cardi with shell buttons, pattern on hem and cuff, finished with a touch of luxury angora in the yoke for glamour and soft texture. Extra long cuffs to keep your hands warm. Slightly shaped waist. Available in 20 colours with matching scarves, gloves and beanies.



TIGERLILLY



POTPOURRI

*"For success, attitude is equally
as important as ability"*

Alpine colours

Cardigan / Sweater / Short Cardigan / Short Sweater



ARCTIC



TAURUS



VINTAGE PINK



CINDY



MERMAID



KATIE-MORAG



OLD ROSE



GREYBERRY



AURORA



FIGARO



FIESTA



PICCALILLI



WILLOW



TIGERLILLY



POTPOURRI



HIGHLAND



PEGASUS



MOSS



LUGANO



ESMERALDA



GREYBERRY

Alpine Short Cardigan

Style No: C4249

100% Merino Lambswool

Sizes: XS / S / M / L / XL / XXL

Slim Fit

This short cardigan sits below your hip bone and has regular sleeves and armhole sizing. Fairisle pattern detail on shoulder only, hip length with extra long cuff and shell buttons. Designed to sit with high waisted trousers, skirts and dresses. Available in 20 colours with matching accessories.



VINTAGE PINK



CINDY

Alpine Short Sweater

Style No: P4250

100% Merino Lambswool

Sizes: XS / S / M / L / XL / XXL

Slim Fit

Hip length, short Alpine sweater in 100% merino wool from Yorkshire. Choose the size to suit your style: size up for a looser shape, or size down for slimline. The sleeves and armhole have a regular fit. Fairisle pattern detail on shoulder only and extra long cuffs. Designed to sit with high waisted trousers, skirts and dresses. Available in 20 colours with matching accessories.



PEGASUS

Alpine Breeze Sweater

Style No: P4226

100% Merino Lambswool

Sizes: Short (S-L) Length: 63cm

Tall (M-XXL) Length: 70cm

Relaxed Fit

Our classic Fairisle yoke pullover is simplified and made in a looser shape for a relaxed fit. The ribs are firmer, thicker and more pronounced. The two sizes are designed according to height. Fairisle pattern only on the shoulder and rib cuffs and hem in main colour. Available in 6 colours with matching accessories.



AURORA



CINDY



OLD ROSE



TIGERLILLY



PEGASUS



AURORA



HIGHLAND



ESMERALDA



ESMERALDA

Alpine Roll Collar Sweater

Style No: P4128

96% Merino Lambswool 4% Angora

Sizes: XS / S / M / L / XL / XXL

Regular Fit

A regular fit roll neck sweater with a slightly shaped waist. Fairisle and tweed pattern around shoulders, above cuffs and hem. Extra long cuffs to keep hands warm. Available in 6 colours, with matching accessories.



TAURUS



VINTAGE PINK



POTPOURRI



PEGASUS



ESMERALDA



HIGHLAND

"The will to do, the soul to dare..."



TAURUS

Alpine Coat

Style No: C4316

100% Merino Lambswool

Sizes: S / M / L / XL Length (M) 90cm

Regular Fit

Feel glamorous in this above the knee length cardigan with 2 pockets and beautiful pattern detail around your shoulders. Ideal for a comfortable and sustainable alternative to a traditional coat.



TIGERLILLY

Alpine Dress

Style No: D4315

100% Merino Lambswool

Sizes: S / M / L / XL

Regular Fit

A glamorous knitted dress with the benefits of extra comfort and warmth and charming patterning across the shoulders.



TAURUS



ARCTIC

WILLOW

HIGHLAND

TAURUS

PEGASUS

TIGERLILLY

Alpine Hoody Sweater

Style No: P4255

100% Merino Lambswool

Sizes: XS / S / M / L / XL / XXL

Regular Fit

A refreshingly sporty take on our Fairisle classic with extra long cuffs, a hood and knitted ties. Fairisle and tweed pattern around shoulders only. No pockets. Available in 8 colours with matching accessories.



FIGARO



MERMAID



FIGARO



FIESTA



PICCALILLI

*"Great talent has always a little
madness mixed up with it"*



LUGANO



ESMERALDA



ARCTIC



PEGASUS



ESMERALDA



LUGANO





There is a bright and infectious gaiety in our new Stobo garments. The unusual stripe and colour combinations bring a lightness to your day and put a skip in your step!

Named after a very beautiful and colourful area in the Scottish Borders, Stobo garments are striped and Fairisle combined with a bold contrast stripe rib cuff. The pullovers can be worn back to front, or front to back, giving choice of colours or patterns for the day.

Made with soft 100% Merino Lambswool spun in Yorkshire in the North of England.



LUSCIOUS



Stobo Fairisle Vee Cardigan

Style No: C4314

100% Merino Lambswool

Sizes: S / M / L / XL

Regular Fit

A funky Vee cardigan with a charming Fairisle pattern on the front and striping on the back and sleeves. With contrasting rib cuffs. Knitted in 100% lambswool and using natural horn buttons.



PHOEBE

Stobo colours

Fairisle Vee Cardigan / Fairisle Sweater



LUSCIOUS



PHOEBE



ROSA



CALAMINE

"As long as the Fates permit, live cheerfully"



ROSA

Stobo Fairisle Sweater (Reversible)

Style No: P4312

100% Merino Lambswool

Sizes: S / M / L / XL

Regular Fit

Adapt your pullover to your mood: wear the funky fairisle pattern to your front with the stripe on your back or reverse it! This fun loving sweater is knitted in merino lambswool with rib cuffs in contrasting colours. The round neck is shaped for comfort either way you decide to wear it.



ROSA



PHOEBE

Stripe Sweater colours



LUSCIOUS



PHOEBE



ROSA



CALAMINE

"Give me an honest laughter"



PHOEBE

Stobo Stripe Sweater (Reversible)

Style No: P4313

100% Merino Lambswool

Sizes: S / M / L / XL

Regular Fit

Bursting with joy, this fun loving sweater is knitted in 100% merino lambswool with rib cuffs in contrasting colours. The round neck is shaped to wear comfortably either way depending on what colours you like best that day.

PHOEBE

Conny



A sustainable luxury fleece collection made with the softest 100% Merino wool spun in Yorkshire and available in 14 beautiful colours across 8 easy to wear styles.

Inspired by the contemporary renaissance in artistry and craft, sustainability is at the heart of this collection.

"It's like a hug" - Cat Ness







Corny Raglan colours



PINK HAZE



BUBBLEGUM



LUSCIOUS LIME



CASPIAN



VOLE



ROSEHIP



INFERNO



WATERCRESS



LANDSCAPE



AUBERGINE



BLACKGRAPE



SEAWEED



METALLIC



REGATTA



"Welcome as the flowers in May"



Corry Ladies Raglan Sweater

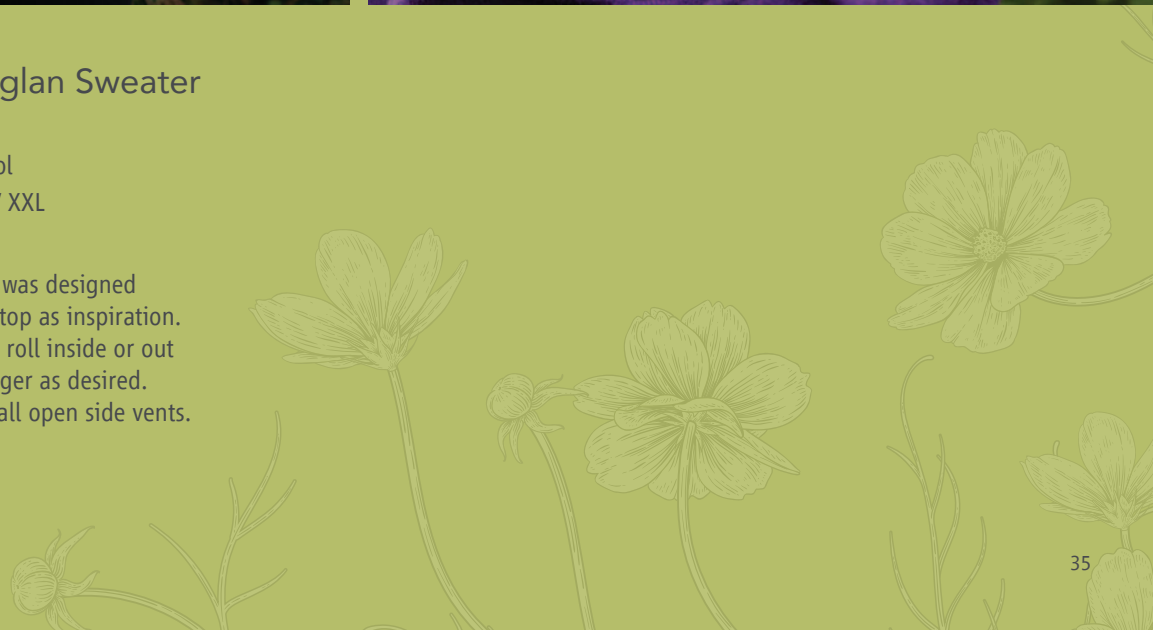
Style No: P4130

100% Merino Lambswool

Sizes: XS / S / M / L / XL / XXL

Relaxed Fit

This ERIBÉ classic shape was designed using the artist's smock top as inspiration. The collar and hems can roll inside or out and made shorter or longer as desired. The bottom hem has small open side vents.





Corry Hoody Sweater

Style No: P4273
 100% Merino Lambswool
 Sizes: XS/S / S/M / M/L / L/XL / XL/XXL / XXL
 Relaxed Fit

This hoody is a sporty new addition with chunky knitted ties in a contrasting colour. Unique and subtle shaping details around the chest and shoulders and no ribs make it easy to wear. Select larger sizes for a loose fit. A sustainable choice.

ROSEHIP

Corry Hoody colours

PINK HAZE (base) / COBBLE (contrast)	INFERNO (base) / COBBLE (contrast)	AUBERGINE (base) / REGATTA (contrast)	LUSCIOUS LIME (base) / VOLE (contrast)	CASPIAN (base) / RHAPSODY (contrast)	LANDSCAPE (base) / TOBACCO (contrast)	VOLE (base) / ACORN (contrast)
BUBBLEGUM (base) / VOLE (contrast)	ROSEHIP (base) / RHAPSODY (contrast)	BLACKGRAPE (base) / ACORN (contrast)	WATERCRESS (base) / RHAPSODY (contrast)	REGATTA (base) / TOBACCO (contrast)	SEAWEED (base) / GAZELLE (contrast)	METALLIC (base) / REGATTA (contrast)



INFERNO



LUSCIOUS LIME



BUBBLEGUM



CASPIAN

Corry Dress

Style No: D4126

100% Merino Lambswool

Sizes: XS / S / M / L / XL

Slim Fit

A versatile dress in luxurious, sustainable wool with the softest handle. Slightly shaped at the waist with a soft folded integral collar and vents at either side of hem. Wear one size larger for a looser fit. Wear together with the Corry Long Cardigan or Colourblock Stole. Length may vary between colours.



ROSEHIP



REGATTA

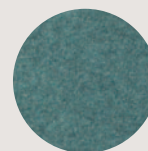
Dress colours



ROSEHIP



WATERCRESS



CASPIAN



REGATTA



BLACKGRAPE

"One crowded hour of glorious life is worth an age without a name"



BLACKGRAPE



REGATTA

Corry Long Cardigan

Style No: C4222

100% Merino Lambswool

Sizes: S/M / M/L / XL/XXL

M/L length: approx 100cm M/L width: approx 64cm

Loose Fit

A lightweight over the knee length coat with practical extra large pockets. The v-neck and front edge rib is integral to the garment and all trims are simple for maximum ease of wear giving a modern look. Wear together with the dresses or top for an updated Twinset. Can be worn outside and inside your home. Length may vary between colours.

This style is generous and each size will fit many people. Select size Small if you wish a shorter length.

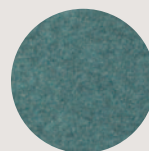
Cardigan colours



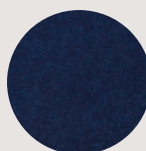
ROSEHIP



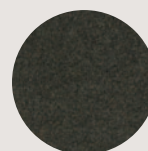
WATERCRESS



CASPIAN



REGATTA



SEAWEED



BLACKGRAPE

Corry V-Neck Tank Top with pockets

Style No: V4232

100% Merino Lambswool

Sizes: XS/S / S/M / M/L / L/XL / XL/XXL

Slim Fit / Relaxed Fit

Minimalist in design, just pure function with 2 pockets. Wear over a dress, a blouse or T-shirt for extra warmth or an attractive addition to your wardrobe. The dual size allows you to choose slim fit or regular fit.



METALLIC



BLACKGRAPE

Tank Top colours



PINK HAZE



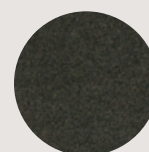
WATERCRESS



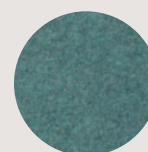
INFERNO



VOLE



SEAWEED



CASPIAN



REGATTA



METALLIC



BLACKGRAPE



Corry Round Neck Cardigan

Style No: C4295

100% Merino Lambswool

Sizes: XS / S / M / L / XL

Regular Fit

An updated version of our previous cardigan with a smaller neck and larger buttons. Minimalist in design, just pure function. Wear over a dress, a blouse or T-shirt for extra warmth or as an attractive add on to your wardrobe.

Cardigan colours



PINK HAZE



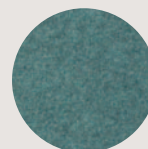
WATERCRESS



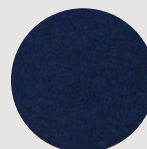
INFERNO



BUBBLEGUM



CASPIAN



REGATTA

Corry T-Shirt Sweater

Style No: P4271

100% Merino Lambswool

Sizes: XS / S / M / L / XL / XXL

Relaxed Fit

At last a fine woollen long sleeve t-shirt that is soft and comfortable. A small rib collar and no trims on cuffs and hips for an easy wear. Ladies should buy a size smaller than their usual size.



T-Shirt colours



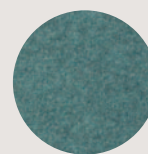
ROSEHIP



AUBERGINE



BLACKGRAPE



CASPIAN



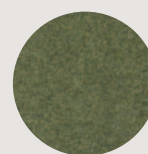
REGATTA



METALLIC



METALLIC



LANDSCAPE







Corry Top

Style No: P4127

100% Merino Lambswool

Sizes: XS / S / M / L / XL

Regular Fit

An easy to wear soft fleece relaxed fit top with a flattering small cross over vee detail at the front neck. For a slimmer fit, wear a size smaller.



METALLIC



CASPIAN

Corry Top colours



LUSCIOUS LIME



WATERCRESS



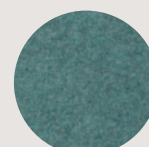
BUBBLEGUM



VOLE



SEAWEED



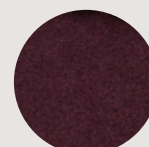
CASPIAN



REGATTA



METALLIC



BLACKGRAPE

Montrose



Striking, bold and easy to wear with unique design details such as guernsey ribs, tweed and Fairisle charm. Made with 100% Merino lambswool, this knitting technique gives a flattering drape for comfort and individuality. Can be worn upside down with a collar and two side pockets for a touch of glamour. Made in EU by a small family-run factory.





"Without courage there cannot be truth, and without truth there can be no other virtue"



HONEY



PERIDOT



SCARLET



OBAN SKY



BRAMBLE



HERMES



BRACKEN

Montrose Blanket Coat

Style No: C4141

100% Merino Lambswool

One Size

Oversized Fit

A versatile mid-thigh length coat / jacket or "throw on" with practical deep pockets. Turn upside down for extra warmth around the shoulder or to wear elegantly with a dress. This garment can be worn like a blanket, and is ideal for those temperature changing moments; a wonderful live-in garment for all occasions.





Stoneybrek



Designed for women and men, our Stoneybrek sweater combines the comfort and warmth of beautifully soft Merino lambswool with signature ERIBÉ styling to create a year-round staple you'll turn to time and time again.

With a flattering circular Fairisle yoke and chunky hand-knit look, the Stoneybrek is great for all seasons thanks to its lightweight garter stitch construction. Ideal for any outdoor activity or relaxing at home. Knitted in EU by our family-run factory partner.



Stoneybrek Sweater

WOMEN'S Style No: P3987

100% Merino Lambswool

Sizes: XS / S / M / L / XL / XXL / XXXL

Relaxed Fit

Round neck sweater with a distinctive graphic yoke around the neck offering a handknitted look at an affordable price. Surprisingly lightweight yet warm and comfortable.

If ladies wish to have a colour from mens, please select one size smaller.

Colours available:

1. CRIEFF
2. RED OAK
3. ARIES
4. LYON
5. SPIKE
6. ARCTIC
7. HONEYSUCKLE
8. ELDERBERRY





"Some touch of Nature's genial glow"

Soft Shetland



With more than a nod to nostalgia, our Soft Shetland Collection makes a statement while keeping you warm and comfortable.

Inspired by traditional patterns from the Fair Isle to the far North West of Scotland and knitted in 100% Soft Shetland Wool, ERIBÉ offers this range of plain and patterned knitwear in a wide range of colourways.







Westray Cardigan

Style No: C4199

100% Soft Shetland Wool

Sizes: XS / S / M / L / XL

Regular Fit

Over-hip length Fairisle cardigan with horn buttons, traditional striped pattern detail on hem and cuff, knitted in supersoft wool.



ELDERBERRY



EILEAN



GLENCOE

*"November's sky is chill and drear,
November's leaf is red and scar"*



Westray Vest

Style No: V4247

100% Soft Shetland Wool

Sizes: XS / S / M / L / XL

Regular Fit

Fairisle vest with scoop round neck, straight shape and traditional striped pattern detail on hem and armhole, knitted in supersoft wool.



Westray Sweater

Style No: P4202

100% Soft Shetland Wool

Sizes: XS / S / M / L / XL

Regular Fit

Over-hip length Fairisle sweater with traditional striped pattern detail on hem and cuff, knitted in supersoft wool.



Westray colours

Cardigan / Sweater / Vest



ORANGE BURST



MALLAIG



GLENCOE



DANNA



FIREFLY



DUNVEGAN



EILEAN



ELDERBERRY



MEADOW



COTSWOLD



APHRODITE



AVIEMORE

Kinross



Kinross styles are a luxury addition to our much sought-after Fairisle collection.

Inspired by the natural beauty of our Scottish landscape and traditional patterns from Shetland and Fair Isle, Kinross garments are made with a premium ultra-soft superfine merino lambswool that feels like cashmere - it is so soft and lightweight, it's like a soft caress!

Made with a Scottish spun, fully traceable, and guaranteed non-mulesed RWS Certified yarn, Kinross styles combine traditional techniques with signature ERIBÉ colouring to create contemporary statement pieces that really stand out from the crowd.

The RWS trademark recognises the best and most reliable farmers. They make sure that the welfare of the land and the animals are ethically looked after and visit each year to support farmers. This certificate can only be used on virgin wool.

By investing in RWS certified wool you show your customers that you care about fair trade, sustainability, and the wellbeing of sheep and land across the world.



Kinross Cardigan

Style No: C4302

100% Superfine Merino Lambswool

Sizes: XS / S / M / L / XL / XXL

Regular Fit

Cardigan version of our ultra soft Fairisle Kinross Sweater finished with horn buttons and traditional striped pattern detail on hem and cuff.



Colours available

Cardigan / Sweater / High Neck Sweater



CORAL



OPAL



TOPAZ



AGATE



FOXGLOVE



ONYX



PRELUDE



GARNET

Kinross High Neck Sweater

Style No: P4297

100% Superfine Merino Lambswool

Sizes: XS / S / M / L / XL / XXL

Regular Fit

Made in EU

A comfortable pullover as soft as our classic Kinross, but knitted firmer for extra warmth. The high collar stands away from the neck and can be turned down inside or out. For a contemporary look, the romantic Fairisle pattern stops at the shoulder as a flattering detail. Hems have a small rib.



CORAL



AGATE

Kinross Sweater

Style No: P4218

100% Superfine Merino Lambswool

Sizes: XS / S / M / L / XL / XXL

Regular Fit

An ultra soft, colourful Fairisle Sweater made with a premium ultra-soft superfine merino lambswool that feels like cashmere – it is so soft and lightweight, it's like a soft caress!

The distinctive striped trims and graphic motifs are a feature of traditional hand-knitted Shetland Fairisles whilst the "floats" on the inside of the garment trap air to provide a layer of extra warmth.

Kinross Hoody Sweater

Style No: P4317

100% Superfine Merino Lambswool

Sizes: XS / S / M / L / XL / XXL

Regular Fit

This sporty hoody sweater feels soft and luxurious. Knitted firmer than the Kinross sweater for extra warmth, and a glamorous alternative. With rib hems, knitted hood and wool cord.



TOPAZ

Hoody colours



CORAL



OPAL



TOPAZ



AGATE



FOXGLOVE



ONYX



PRELUDE



GARNET



CORAL



TOPAZ



PRELUDE



FOXGLOVE

Kinross Waistcoat, Vee Neck

Style No: V4318

100% Superfine Merino Lambswool

Sizes: XS / S / M / L / XL

Regular Fit

A regular fit, vee neck waistcoat that gives a flattering effect due to the long rib hem that hugs the hips. It feels like soft cashmere, and is thicker than the Corry and Alpine range. Size M has 5 horn buttons. The Fairisle is on front and back.



OPAL

Waistcoat colours



CORAL

FOXGLOVE

GARNET

AGATE

ONYX

PRELUDE

OPAL

TOPAZ

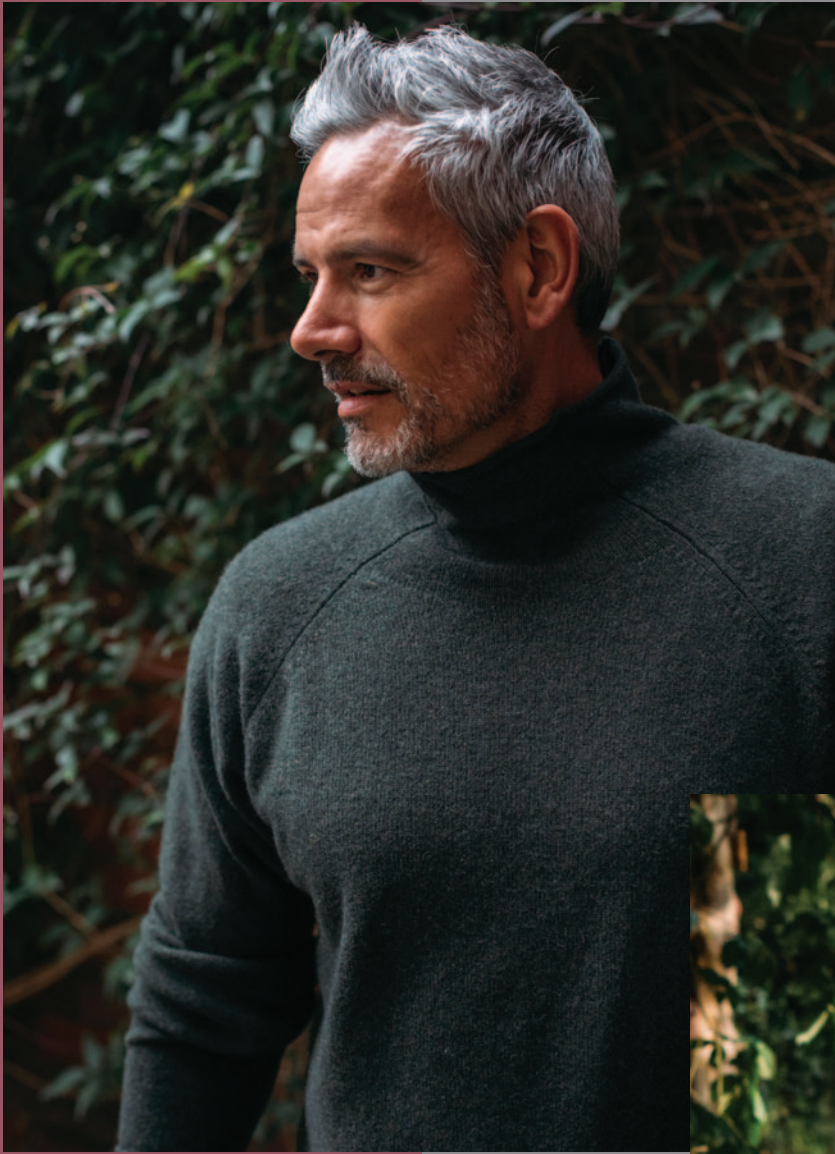


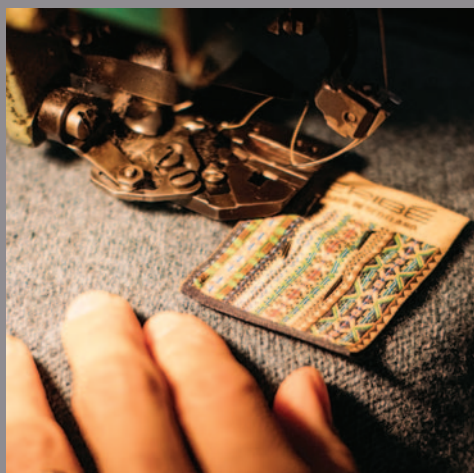




Menswear Collection

2024 / 2025





A sustainable luxury fleece collection made with the softest 100% Merino wool spun in Yorkshire and available in 10 beautiful colours across 3 easy to wear styles.

Inspired by the contemporary renaissance in artistry and craft, sustainability is at the heart of this collection.

"It's like a hug" - Cat Ness

Men's Corry Raglan Sweater

Style No: P4164

100% Merino Lambswool

Sizes: XS / S / M / L / XL

Relaxed Fit

This ERIBÉ classic shape was designed using the artist's smock top as inspiration. The collar and hems can roll inside or out and made shorter or longer as desired.y.



VOLE

Corry Raglan colours



ROSEHIP



LANDSCAPE



WATERCRESS



CASPIAN



VOLE



BLACKGRAPE



METALLIC



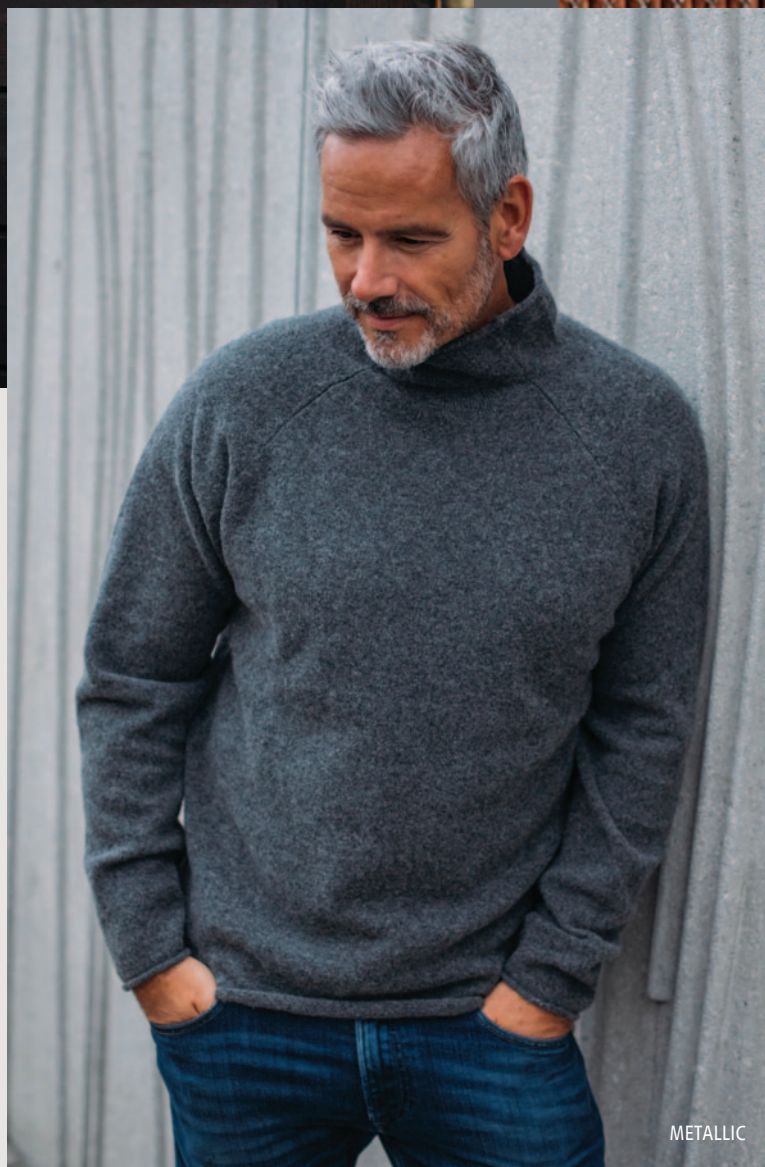
SEAWEED



REGATTA



AUBERGINE



Men's T-Shirt Sweater

Style No: P4271

100% Merino Lambswool

Sizes: XS / S / M / L / XL / XXL

Relaxed Fit

At last a fine woollen long sleeve t-shirt that is soft and comfortable. A small rib collar and no trims on cuffs and hips for an easy wear.

Colours available:

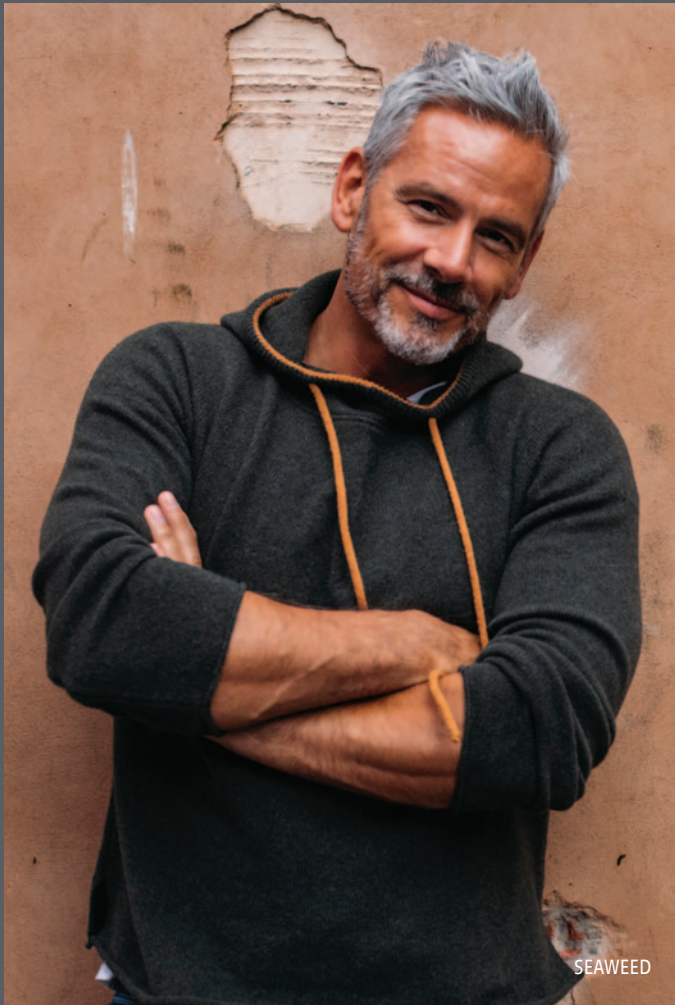
AUBERGINE
BLACKGRAPE
CASPIAN
LANDSCAPE
METALLIC
REGATTA
ROSEHIP
SEAWEED



VOLE



AUBERGINE



SEAWEED



BLACKGRAPE



METALLIC



METALLIC

Corry Hoody Sweater

Style No: P4273

100% Merino Lambswool

Sizes: XS/S / S/M / M/L / L/XL / XL/XXL / XXL

Relaxed Fit

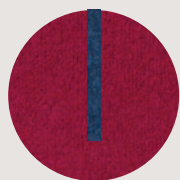
This hoody is a sporty new addition with chunky knitted ties in a contrasting colour. Unique and subtle shaping details around the chest and shoulders and no ribs make it easy to wear. Select larger sizes for a loose fit.

A sustainable choice.

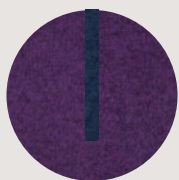


METALLIC

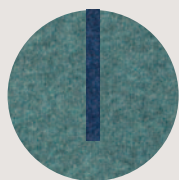
Corry Hoody colours



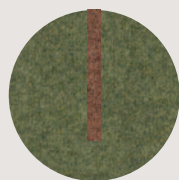
ROSEHIP (base) /
RHAPSODY (contrast)



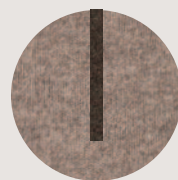
AUBERGINE (base) /
REGATTA (contrast)



CASPIAN (base) /
RHAPSODY (contrast)



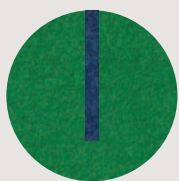
LANDSCAPE (base) /
TOBACCO (contrast)



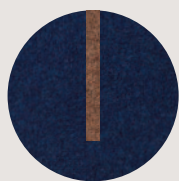
VOLE (base) /
ACORN (contrast)



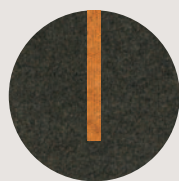
BLACKGRAPE (base) /
ACORN (contrast)



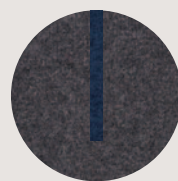
WATERCRESS (base) /
RHAPSODY (contrast)



REGATTA (base) /
TOBACCO (contrast)



SEAWEED (base) /
GAZELLE (contrast)



METALLIC (base) /
REGATTA (contrast)



Stoneybrek Sweater

MEN'S Style No: P4148

100% Merino Lambswool

Sizes: XS / S / M / L / XL / XXL

Relaxed Fit

Round neck sweater with a distinctive graphic yoke around the neck offering a handknitted look at an affordable price. Surprisingly lightweight yet warm and comfortable.

If men wish to have a colour from ladies, please select one size larger.

Colours available:

1. ARCTIC
2. RED OAK
3. CRIEFF
4. SPIKE
5. LYON
6. ARIES



RED OAK



Stoneybrek

Designed for women and men, our Stoneybrek sweater combines the comfort and warmth of beautifully soft Merino lambswool with signature ERIBÉ styling to create a year-round staple you'll turn to time and time again. With a flattering circular Fairisle yoke and chunky hand-knit look, the Stoneybrek is great for all seasons thanks to its lightweight garter stitch construction. Ideal for any outdoor activity or relaxing at home. Knitted in EU by our family-run factory partner.



*"Unless a tree has borne blossoms in spring, you
will vainly look for fruit on it in autumn"*



Soft Shetland

With more than a nod to nostalgia, our Soft Shetland Collection makes a statement while keeping you warm and comfortable.

Inspired by traditional patterns from the Fair Isle to the far North West of Scotland and knitted in 100% Soft Shetland Wool, ERIBÉ offers this range of plain and patterned knitwear in a wide range of colourways.



Brodie colours

Sweater / Vest



ASH



ASPEN



LEWIS



OSWALD



RUPERT



LOVAGE



CLIFF



DRIFTWOOD



WOODLAND



KINGFISHER

Brodie Sweater

Style No: P4196

100% Soft Shetland Wool

Sizes: XS / S / M / L / XL / XXL

Relaxed Fit

Made in Scotland

Mid weight sweater with slight upturned round neck, striped hem and cuff detail and all over Fairisle pattern. Knitted in supersoft wool.

Brodie Vest

Style No: V4200

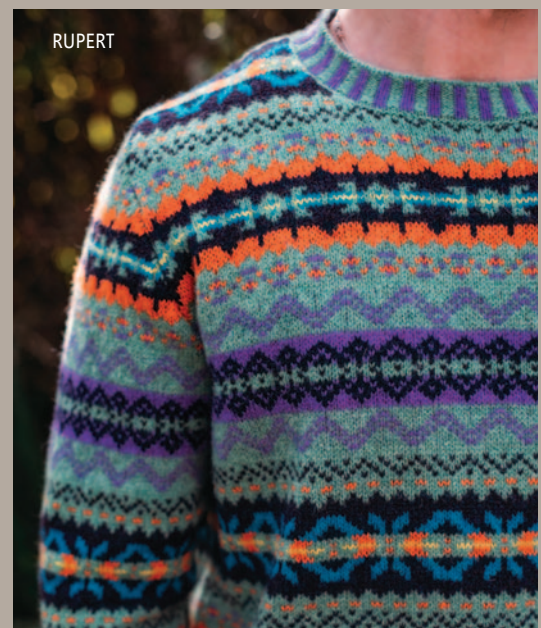
100% Soft Shetland Wool

Sizes: XS / S / M / L / XL / XXL

Slim Fit

Made in Scotland

Mid weight v-neck vest with striped hem and cuff detail and all over Fairisle pattern. Knitted in supersoft wool.



Bruar colours



BRAMBLING



AURORA



FERN



SUNSET



TEMPEST



PAISLEY



TEASEL



BLUEBERRY



FORGE



EAGLE



BLACKGROUSE



EVERGREEN



Bruar Sweater

Style No: P4198

100% Soft Shetland Wool

Sizes: XS / S / M / L / XL / XXL

Regular Fit

Made in Scotland

Mid weight sweater with slight upturned round neck and striped hem and cuff detail. Knitted in supersoft wool.

Brora Sweater

Style No: P4324

100% Soft Shetland Wool

Sizes: XS / S / M / L / XL / XXL

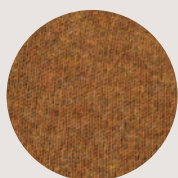
Regular Fit

Made in Scotland

A classic sweater with a difference: Spun in soft Shetland wool in Yorkshire, with wool that is dyed in many colours before spinning that gives each colour depth.



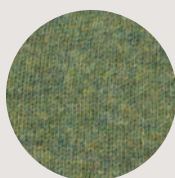
Brora colours



BRAMBLING



AURORA



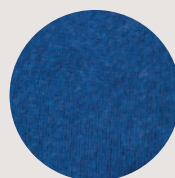
FERN



SUNSET



PAISLEY



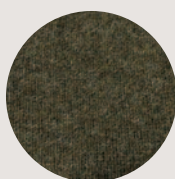
TEMPEST



TEASEL



FORGE



EVERGREEN



BLUEBERRY



EAGLE



BLACKGROUSE







Accessories

Our colourful scarves, wraps, hats and gloves offer an unrivalled variety of texture, colour and pattern to bring joy to your customers. ERIBÉ's accessory collection, made in Scotland and knitted with yarn spun in Yorkshire, complements the collection, adding pattern to plain garments or stripes with Fairisle to complete a contemporary outfit. We offer a wide selection of colours to match all garments available.



Alpine Scarf

Style No: S3972

100% Merino Lambswool

One Size (172 x 40cm)

Made in EU

Intricate embroidery-like Fairisle with two tone tweed textured base patterning and scallop edges.



OCTOBER



VELVET



VELVET

Alpine accessories colours



CALLA



FESTIVAL



DEW



OCTOBER



WINTER



VELVET



ELDER



ARCTIC



MOLLY



CALLA

Alpine Beanie

Style No: H4281

100% Merino Lambswool

Made in Scotland

One Size

Fully fashioned shaped beanie to match the collection. Suitable for both women and men.

Alpine Gloves

Style No: G4280

100% Merino Lambswool

Made in Scotland

One Size

A new version of our popular Fairisle glove with long cuffs, small rib and block colour fingers. Matches the collection.

Alpine Turn Up Hat

Style No: H4323

100% Merino Lambswool

Made in Scotland

One Size

Seamless colour blended Fairisle beanie with turn-up rib suitable for women and men. Matches the collection.



FESTIVAL

MOLLY





Alloa Stripe Scarf

Style No: S4320

100% Merino Lambswool

Made in Scotland

One Size

A wider scarf, in a soft fleece finish, with a mix of bold blocks of colours, stripes and one section of two tone Fairisle patterning that can be worn together with much of the collection.

Alloa Fairisle Scarf

Style No: S4319

100% Merino Lambswool

Made in Scotland

One Size

Scottish Fairisle patterns in a kaleidoscope of colours, designed to match the collection and an array of outfits. With ribbed edges and a soft finish.



Alloa colours



CALLA



FESTIVAL



MOLLY



OCTOBER



DEW



ELDER



WINTER



VELVET

Alloa Fingerless Gloves

Style No: G4321

100% Merino Lambswool

Made in Scotland

One Size

Graphic pattern fingerless gloves.

Alloa Beanie

Style No: H4322

100% Merino Lambswool

Made in Scotland

One Size

Colourblock beanie hat with
Fairisle stripe detail.

Alloa Gloves

Style No: G4207

100% Merino Lambswool

Made in Scotland

One Size

Fairisle gloves with contrast
inner cuff colour.



OCTOBER



CALLA



VELVET

Alloa Open Mitt

Style No: M4206

100% Merino Lambswool

Made in Scotland

One Size

Fairisle patterned mitts
with contrast inner
cuff colour.

Alloa Beret

Style No: H4062

100% Merino Lambswool

Made in Scotland

One Size

Circular knit Fairisle beret which can be worn like a beanie or in true French style.



VELVET

Alloa Beret colours



CALLA



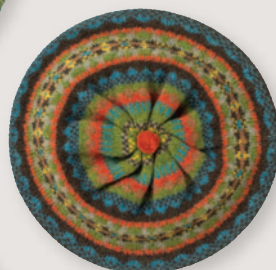
FESTIVAL



MOLLY



MOLLY



OCTOBER



DEW



WINTER



VELVET



VELVET



Treeline Wrap

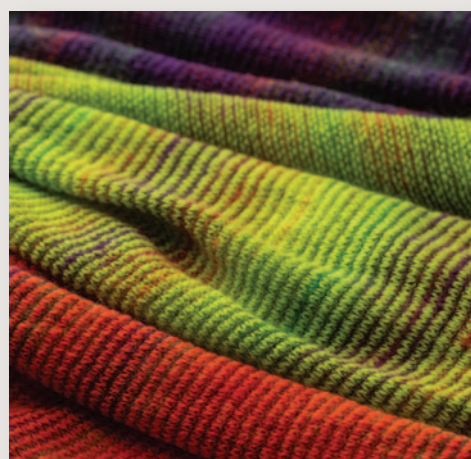
Style No: S4152

80% Lambswool 20% Kid Mohair

Made in Scotland

One Size (185 x 85cm)

Beautifully soft and lightweight wrap giving volume in subtly changing colours and block stripes with a touch of luxury super-kid mohair.





SEASCAPE



LIME



AUBERGINE



BUBBLEGUM

Pioneer colours

Scarf / Snood



ROSALIA



HERA



LIMELIGHT



LICHEN



ANISEED



Pioneer Snood

Style No: S4277

100% Merino Lambswool

Made in Scotland

One Size, W33cm x H28cm

A soft, reversible snood with Fairisle on one side and bold blocks of colour on the other. Will cheer you up in all winter weathers. For women and men.

Pioneer Scarf

Style No: S4278

100% Merino Lambswool

Made in Scotland

One Size, 150cm x 17cm

A beautiful double sided scarf to last a life time. Fairisle on both sides, soft and tactile with a diagonal design point feature. Can be worn in many ways to suit the occasion. For women and men.



LIMELIGHT



ANISEED



HERA



REGATTA

JEANS

ROSEHIP

BUBBLEGUM

LANDSCAPE

MUNSELL GREEN

Bowden Colour Block Stole

Style No: S4275

100% Merino Lambswool

Made in Scotland

One Size, 174cm x 70cm

An elegant and glorious addition to all wardrobes; as a shawl, a scarf, a wrap or a blanket to keep the cold at bay while adding a dash of colour. For women, men and families.

Bowden Colour Block Snood

Style No: S4270

100% Merino Lambswool

Made in Scotland

One Size, W30cm x H45cm

This medium weight snood in soft lambswool is versatile, warm and practical, especially for outdoor sports and recreation. For women, men and children.





Snood colours

ROSEHIP

MUNSELL GREEN

BUBBLEGUM



REGATTA

LANDSCAPE

JEANS



JEANS

Bowden colours

Beret / Open Mitt



BUBBLEGUM



JEANS



MUNSELL GREEN



LANDSCAPE



ROSEHIP



REGATTA

Bowden Rib Beret

Style No: H4264

100% Merino Lambswool

Made in Scotland

One Size

An attractive moving rib beret to complete each outfit. Matches all accessories and garments.

Bowden Rib Open Mitt

Style No: G4265

100% Merino Lambswool

Made in Scotland

One Size

Hard wearing rib open mitts with weave pattern detail. Fold back from fingers when active. Wear with the collection.



REGATTA



LANDSCAPE



JEANS



Corry Scarf

Style No: S4244

100% Merino Lambswool

Made in Scotland

One size (approx. 33 x 175cm)

An attractive warm scarf with a textured patterned edge that can also be folded over as a shawl collar and worn as a stole.

Colours available:
(left to right above)

1. PINK HAZE
2. BUBBLEGUM
3. INFERNO
4. LUSCIOUS LIME
5. WATERCRESS
6. AUBERGINE
7. CASPIAN
8. LANDSCAPE
9. SEAWEED
10. ROSEHIP
11. BLACKGRAPE
12. REGATTA
13. METALLIC
14. VOLE

CASPIAN



Corry Tonal Cowl

Style No: S4155

100% Merino Lambswool

Made in Scotland

One size

Striped rib texture cowl with integrated twist. Beautifully soft and lightweight chunky knit that can be worn many ways.



AUBERGINE



AUBERGINE



BUBBLEGUM



HAZEL



REGATTA



BLACKGRAPE



BERRY





Size Information

ERIBÉ uses size labels 'XS-XXL' but as a rough guide, these relate to national sizes (see below). We also offer 'split sizing' on certain styles, which fall between the two 'full' sizes, the wear of the smaller size is a snugger fit, and the larger is more relaxed.

Womens

ERIBÉ SIZES	XS	S	M	L	XL	XXL
UK / AUS	6-8	8-10	10-12	12-14	14-16	16-18
EUROPEAN	36	38	40	42	44	46
US	4-6	6-8	8-10	10-12	12-14	14-16

Slim Fit / Regular Fit / Relaxed Fit / Oversized

We offer a range of different fits dependent on individual styles, each with the approximate measurements as the charts below. Some styles will differ, such as 'longline' styles with added length. Due to the natural properties of wool, guideline for size, tolerance up to 2cm.

Women's Slim Fit

Styles: Alpine Cardigan, Alpine Short Cardigan, Alpine Short Sweater, Corry Dress.

ERIBÉ SIZES	XS	S	M	L	XL	XXL
CHEST WIDTH	41cm	44cm	47cm	50cm	53cm	56cm

Women's Regular Fit

Styles: Alpine Sweater, Alpine Roll Collar Sweater, Alpine Hoody Sweater, Alpine Coat, Alpine Dress, Stobo Fairisle Sweater, Stobo Fairisle Vee Cardigan, Stobo Stripe Sweater, Corry Top, Corry Round Neck Cardigan, Westray Cardigan, Westray Sweater, Westray Vest, Kinross Sweater, Kinross High Neck Sweater, Kinross Cardigan, Kinross Hoody Sweater, Kinross Waistcoat, V- Neck.

ERIBÉ SIZES	XS	S	M	L	XL	XXL
CHEST WIDTH	44cm	47cm	50cm	53cm	56cm	59cm

Women's Relaxed Fit

Styles: Alpine Breeze Sweater, Corry Ladies Raglan Sweater, Corry Tank Top, Corry Hoody Sweater, Corry T-Shirt Sweater, Corry Long Cardigan, Stoneybrek Sweater.

ERIBÉ SIZES	XS	S	M	L	XL	XXL
CHEST WIDTH	48cm	51cm	54cm	57cm	60cm	63cm

Please note: all size charts shown are a guideline only. For more detailed size guides, please refer to our new Trade Portal.

Mens

ERIBÉ SIZES	XS	S	M	L	XL	XXL
UK / AUS	36"	38"	40"	42"	46"	48"
EUROPEAN	44	46	48	52	54	56
US	36"	38"	40"	42"	46"	48"



Men's Slim Fit

Styles: Brodie Vest

ERIBÉ SIZES	XS	S	M	L	XL
CHEST WIDTH	46cm	48cm	51cm	54cm	58cm

Men's Regular Fit

Styles: Bruar Sweater, Brora Sweater.

ERIBÉ SIZES	XS	S	M	L	XL	XXL
CHEST WIDTH	47cm	50cm	53cm	56cm	60cm	64cm

Men's Relaxed Fit

Styles: Stoneybrek Sweater, Corry T-Shirt Sweater, Brodie Sweater.

ERIBÉ SIZES	XS	S	M	L	XL	XXL
CHEST WIDTH	49cm	52cm	55cm	58cm	62cm	66cm

Styles: Mens Corry Raglan Sweater, Corry Hoody Sweater.

ERIBÉ SIZES	XS	S	M	L	XL
CHEST WIDTH	51cm	54cm	57cm	60cm	63cm



Caring for your ERIBÉ Knitwear

ERIBÉ creates beautiful knitwear that is warm, soft and very special. We use only the finest natural yarns, most of them spun in Yorkshire, by people who, like us, have an inherited understanding of craftsmanship and a love for what they do.

It is perfectly normal that when you first wear a pure wool garment, loose fibres near the surface rub together during movement and form little balls of wool known as pilling or bobbling. We have put together this simple guide to help you beat the bobbles and keep your ERIBÉ garment looking fantastic for many years to come...



Handwash is best

This is the gentlest way to wash your knitwear and the best way to avoid shrinkage and minimise pilling. Wash by hand in tepid water.



Wash inside out

Any pilling caused by washing will be on the inside not the outside.



Use liquid soap

Add a small amount of liquid hand soap and soak the garment in lukewarm water for 5 minutes. Never use regular washing detergent as this can damage the fibres.



Squeeze, don't rub

To wash the garment you must gently squeeze, without rubbing, the garment in the water. Lay your damp garment on a large bath towel. Gently roll the towel and the garment together much like a Swiss roll to remove the excess water.



Air dry flat

Pull gently to size and allow to dry flat on a clean towel away from direct heat sources such as radiators. When dry, press to shape using a damp towel or lightly steam by holding a steam iron just above the surface of the garment.



Remove any pilling

When the garment is completely dry, gently remove the small pills either by hand or with a hand-held sweater comb or razor - NEVER use scissors. By doing this after each of the first 3-4 washes, you will find that the pilling subsides and will eventually disappear.

Forward Ordering Deadline 2024

Due to the handcrafted nature of our knitwear and use of high-quality natural materials that we pre-order; the many processes take several months to complete – so please order as soon as possible to ensure we still have space to knit especially for you. Our Capacity is limited, and we may have to close order books early if space is full, or only be able to offer a later delivery.

Because we offer such a wide range of products and colours, there simply isn't space to produce absolutely everything on offer in time for our first delivery slot. If you wish a June delivery, please make sure you only order the products marked in the brochure. Everything, including those available for June are available from July onwards.

Things do change... Please refer to our website/ trade portal for the most up to date information and ensure you are signed up to receive our newsletter for knitwear on offer and new opportunities beyond these dates.

2024 ORDER DEADLINES			
Styles available		Delivery Slot (Please allow the whole month for delivery)	Order Deadline
1st	Alpine (Classics C3735 and P3974) Westray / Corry / Montrose Blanket Coat	June 2024 – Limited selection available	Sunday 25th February 2024
2nd	Full collection available except Alpine Hoody, Coat and Dress	July – August 2024	Sunday 25th February 2024
3rd	Full collection + Alpine Hoody, Coat and Dress	September – October 2024	Sunday 31st March 2024

Packing each order takes time – so we can't always ship on the first of the month, though we will aim to have your order with you before your chosen delivery month is finished.

— — — — — Working with ERIBÉ in 2024 — — — — —

- There is a minimum of 2 pcs per colour on all products ordered.
- £2000 / €2000 / \$4000 AUS minimum spend to order with us.
- New customers will be on proforma terms, but can move to 30-day credit terms following first year review.
- Payments must be made in the currency on the invoice, and to the corresponding bank account.
- Orders totalling over £2,500 / €3000 come with free carriage within the EU.
- Customer will have 7 days from receipt of order confirmation, or by the next order deadline, whichever is sooner to check any discrepancies, thereafter the order will be deemed accepted and confirmed.
- If customer cancels order more than 8 working days after receiving confirmation, they are responsible to pay a cancellation cost valued at 30% of their order.

If the customer order is received less than 8 days before the deadline, the number of days to cancel is reduced accordingly – orders cannot be changed or cancelled more than one day after the order deadline.

Please see full terms and conditions of ordering for full details.

— — — — — How to contact ERIBÉ — — — — —

HEAD OFFICE

Sales / Design / Marketing / Accounts /
Showroom / Despatch

ERIBÉ Knitwear Ltd, Rose House,
Dingleton Road, Melrose,
TD6 9QY Scotland, UK.

Sales enquiries: Tel: +44 (0)1896 755540

Email: sales@eribe.com

All other enquiries: Tel: +44 (0)1896 750952

ERIBÉ MANUFACTURING - WOOLLY TOWERS

Unit 8g, Tweedside Park, Tweedbank,
Galashiels, TD1 3TE Scotland, UK.

EU DISTRIBUTION CENTRE:

ERIBÉ Knitwear Limited

Sp. z o.o. Oddział w Polsce

Janówek, ul. Słoneczna 18

05-555 Tarczyn, Polska (Poland)

Branch Manager: Elzbieta Pruszkowska-Sierzega (Ela)

Placing an Order

Please contact sales@eribe.com to get your sign in details and user guide for our new Trade Portal.
View images of all styles and prices in your currency on your own private account.
ERIBÉ stock information will be added soon, to help you top up when possible throughout the year.
Please contact Shona or Sophie at sales@eribe.com to discuss anything.

To place an order and for details on how to set up your
own ERIBÉ Trade Portal account please contact:

Tel: +44 (0)1896 755540 Email: sales@eribe.com

Agents - UK, Europe and beyond



SOUTHERN ENGLAND

Contact: Andy Nicholls

Tel: 07967 096 734 Email: andy@eribe.com



SPAIN / RAMON MONTIEL GOMEZ

Contact: Ramon Montiel

Address: c. Sepulveda, 185, 2-2a 08011 Barcelona, Spain

Tel: (+34) 93 451 21 94 Mob: (+34) 670 09 38 77

Email: rmontiel740@gmail.com



SOUTH GERMANY / AGENTUR ELKE WIRICHS

Contact: Elke Wirichs

Address: Heinrich-Kley-Str. 12, 80807 München Schwabing, Germany

Tel: +49 89 3230 8100 / Mob: +49 177 3236 627

Email: info@elke-wirichs.com Website: www.elke-wirichs.com

NORTH GERMANY / WOLLAGENTEN - AGENTUR MUMME

Contact: Carsten Mumme

Address: Kaethe-Kollwitz-Str. 115, 04109 Leipzig, Germany

Tel: +49 151 4190 5377 Email: post@wollagenten.de

Website: www.wollagenten.de



AUSTRIA / FREE MOUNTAIN GmbH

Contact: Andreas Schmied

Address: Rupertgasse 4, 5020 Salzburg, Austria

Tel: +43 662 876 108 / Mob: +43 664 2230 640

Email: office@freemountain.at Website: www.freemountain.at



SWITZERLAND / THE FERRARI AGENCY

Contact: Heidy and Peter Ferrari

Address: Industriestrasse 57, 8152 Glattbrugg, Zurich, Switzerland

Tel : +41 076 587 61 53 / Tel : +41 076 593 88 67

Email: theferrariagency@gmail.com Website: www.theferrariagency.com



DENMARK/SWEDEN / AN APPAREL AGENCY

Contact: Sophie Vang

Address: Baunevej 19, 3400 Hillerød, Denmark

Tel: +45 53 73 10 11

Email: sophie@anapparel.agency



THE NETHERLANDS / MAAK! Fashion Agency

Contact: Lucas Hubrecht

Address: Rietgrachtstraat 30, 6828 KD Arnhem (Nederland)

Tel: +31 (0) 644 100 659 Email: info@maakagency.nl

Website: www.maakagency.nl



ITALY / HEDA SHOWROOM

Contact: Alessandro Zanardi / Daniele Zanardi / Chiara Alfieri

Tel: +39 0254123995 Mob: +39 3472820751

Address: Heda Showroom, Via Piercandido Decembrio 31 Milano

Email: c.alfieri@heda.it / d.zanardi@heda.it / a.zanardi@heda.it

Website: www.modemonline.com



AUSTRALIA & NEW ZEALAND / LE BUREAU FASHION MARKETING

Contact: Kim Amber Rossouw

Address: Suite 7, 112 McEvoy Street, Alexandria, NSW 2015, Sydney

Tel: +61 (02) 96984450 / Mob: +61 (0) 407227659

Email: kim@lebureauofashion.com

Website: www.lebureauofashion.com



CHINA

THE ENGINEER & SPIRIT / Qingxian Clothing Trading Co. Ltd

Contact: Jacky Tel: +86 13958110436

Address: TangShang 433, HangZhouCity, China

Email: jacky@engineerclothing.com

Website: www.engineerclothing.com



ERIBÉ®
KNITWEAR DESIGN • SCOTLAND

Rose House, Dingleton Road, Melrose, Scottish Borders, UK TD6 9QY

Tel: +44 (0)1896 755540 www.eribe.com

