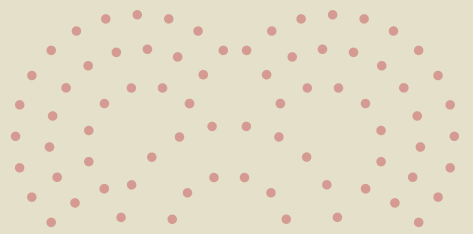


This year at ERIBÉ we decided to consider the positioning of our seasonal collections and reframe them as CHAPTERS. With this CHAPTER ONE delivering until May 2026 and CHAPTER TWO delivering later in 2026. This collection offers 7 different weights and textures of yarns so that whatever season and climate you are preparing for we have a beautiful selection of knitwear for your customers.

We have taken our inspiration for this collection from the beauty of Scotland's rugged coastline, using the timeless elegance of natural fibres to reflect Scotland's Sea, Stone, and Sand. Each garment captures the essence of Scotland's diverse landscapes. The ever-changing colour of sea that surrounds Scotland; the weathered stones, and the textured, grainy white sands.

The collection's new lightweight fabrics marry the crispness of medium weight linen with the softness and breathability of smooth, fine cotton. The knits are thoughtfully constructed, with patterns inspired from our archive of handknitted garments with cable-ribbed details, textures and irregularities to mimic handknits and of course Scottish Fairisle patterns. Our popular lambswool garments return in bestselling and our new colourways. We can't wait for your customers to enjoy them.

Rosemary Eribé





Sustainability

Since the beginning (in 1986), ERIBÉ has been mindful of the environment, choosing to use the best ecological natural yarns and promote sustainable fashion in every collection. Our colourful knitwear never goes out of style and in a world of throw-away clothing, this is slow fashion at its very best - our products are designed to last.

Embedded in the 38 year ERIBÉ culture is the decision to use, re-use, recycle, share and donate. We have always been an eco-first business where waste is unacceptable.

Wool is nature's miracle fibre, by choosing wool first we encourage sustainability, renewability, biodegradable, traceability, in short – beautiful clothes with a responsible and positive environmental impact.

.....

FOR MORE INFORMATION ON THE UNIQUE PROPERTIES OF WOOL AND WHAT MAKES IT ONE OF THE BEST FIBRES FOR SUSTAINABLE, LOW IMPACT CLOTHING VISIT:

WWW.WOOLMARK.COM/ENVIRONMENT/OUR-VISION

WWW.WOOLMARK.COM/ENVIRONMENT/FASHIONS-ENVIRONMENTAL-IMPACT

WWW.CAMPAIGNFORWOOL.ORG/ABOUT-WOOL WWW.CAMPAIGNFORWOOL.ORG/WHYWOOLMATTERS

Below are just some of the steps we have taken to reduce our environmental impact across all areas of the business. We are constantly seeking to improve our sustainability to help us achieve our environmental goals.



RAW MATERIALS

We use yarn which breaks down into its component parts at the end of its life and can even be composted. The many unique properties of natural wool make it one of the best sustainable fibres:

- 100% NATURAL
- BIODEGRADABLE
- RENEWABLE AND SUSTAINABLE
- STRONG AND DURABLE
- LOW CARBON IMPACT
- RECYCLABLE



MANUFACTURING

We use green energy produced by solar panels to power our factory.

Our state-of-the-art washing machines (used for 20% of our collection) use minimal water and soft Scottish water reduces the amount of chemicals required. The high spin cycle has reduced drying time. Faulty garments are mended wherever possible to prevent re-making. Our suppliers and manufacturing partners are chosen for their high environmental standards and ethical working practices.



DESIGN

Our timeless knitwear is designed to outlast short-lived fashion trends. We carefully build on proven designs with new colours and only add new styles we know our customers will love. Everything, from our yarn to our buttons and trimmings, are chosen to have as little impact on the planet as possible.



PACKAGING

We use pins and cotton strings to attach swing tags rather than plastic kimbles. We have replaced our plastic garment bags with biodegradable bags that leave zero negative waste or microplastics.



REDUCING WASTE

We only make to order – unlike fast fashion retailers producing excess requiring to be sold off cheaply or sent to landfill. Knitting is much kinder than cut & sew in woven fabrics – almost all the raw material is used as each garment panel is knitted to size, leaving no waste.



RE-USE & RE-CYCLE

Faulty panels are either re-wound back into yarn for knitting or repurposed. We use surplus yarn and discontinued colours to make scarves and garments. These are sold at a discounted price or given to charities.



Our Yarns

ERIBÉ is all about the people involved; from our wonderful in-house team, wool producers, spinners, mills and suppliers, to our agents, buyers and customers. Great attention is paid to every person involved in our supply chain to ensure the highest standards of ethical production.

All our woollen yarns are:

Ethically sourced from top producers who ensure our yarn is treated with passion and care at every stage of the production process

Mulesing free - “No Fly Strike”

Follow the EU REACH and OEKO-TEX® dye regulations

RWS (Responsible Wool Standard) and Control Union certified



KIND TO
ANIMALS



ENVIRONMENTAL
& SUSTAINABLE



QUALITY
ASSURED



ALWAYS
TRACEABLE



SOCIALLY
RESPONSIBLE



NON-MULESED
WOOL



MERINO LAMBSWOOL

The Merino Lambswool we use for our ALPINE, STOBO, CORRY, MONTROSE and STONEYBREK styles is spun in Yorkshire by a family-owned company who have been spinning yarn for over 200 years. The fibre is dyed before it is spun - a gentle process that gives a superior colour result and finished handle. They source natural fibres with the highest standards of animal welfare and take the issues of sustainability seriously. Their Yorkshire mill uses technology to reduce power usage and all wood, paper, plastic, metal and fibre waste is recycled.

EXTRAFINE & SUPERFINE MERINO LAMBSWOOL

KINROSS garments are made with a premium Scottish spun, fully traceable, and guaranteed non-mulesed RWS Certified superfine merino lambswool yarn. Soft and lightweight. The spinner uses water drawn from nearby Loch Leven - the dyes used are environmentally friendly, so the water used is cleaned and returned to the bird and fish nature reserve loch once dyeing is complete. New MELROSE garments are made with a luxury extrafine Merino, allowing for an even softer and lightweight finish. This yarn is sourced from a new very soft and fine merino for easy wear in all weather. It is also Responsible Wool Standard Certified, fully traceable and ethically produced.



SOFT SHETLAND

The Responsible Wool Standard (RWS) aims to improve the welfare of sheep and the land they graze on. It requires all sites from wool farmers to the seller in the final business-to-business transaction, to be certified. RWS farmers must meet animal welfare, land management, and social requirements. Our Soft Shetland wool is spun in Yorkshire from New Zealand wools produced by suppliers who operate very high welfare practices in the farming of their sheep which also means they are mulesing-free. All dyes and chemicals used in the manufacturing process conform to the latest EU REACH and OEKO-TEX® regulations.



CHAPTER ONE : 2026



THE VAILA LACE

8 - 11



THE TWEED NEP

12 - 15



THE WESTRAY

26 - 33



THE ALPINE

16 - 25



THE KINROSS

34 - 41



THE MONTROSE

42 - 45



THE CORRY

46 - 57



THE BRODIE

58 - 61



THE BRORA

62 - 67



THE BRUAR FALLS

68 - 71



THE STONEYBREK

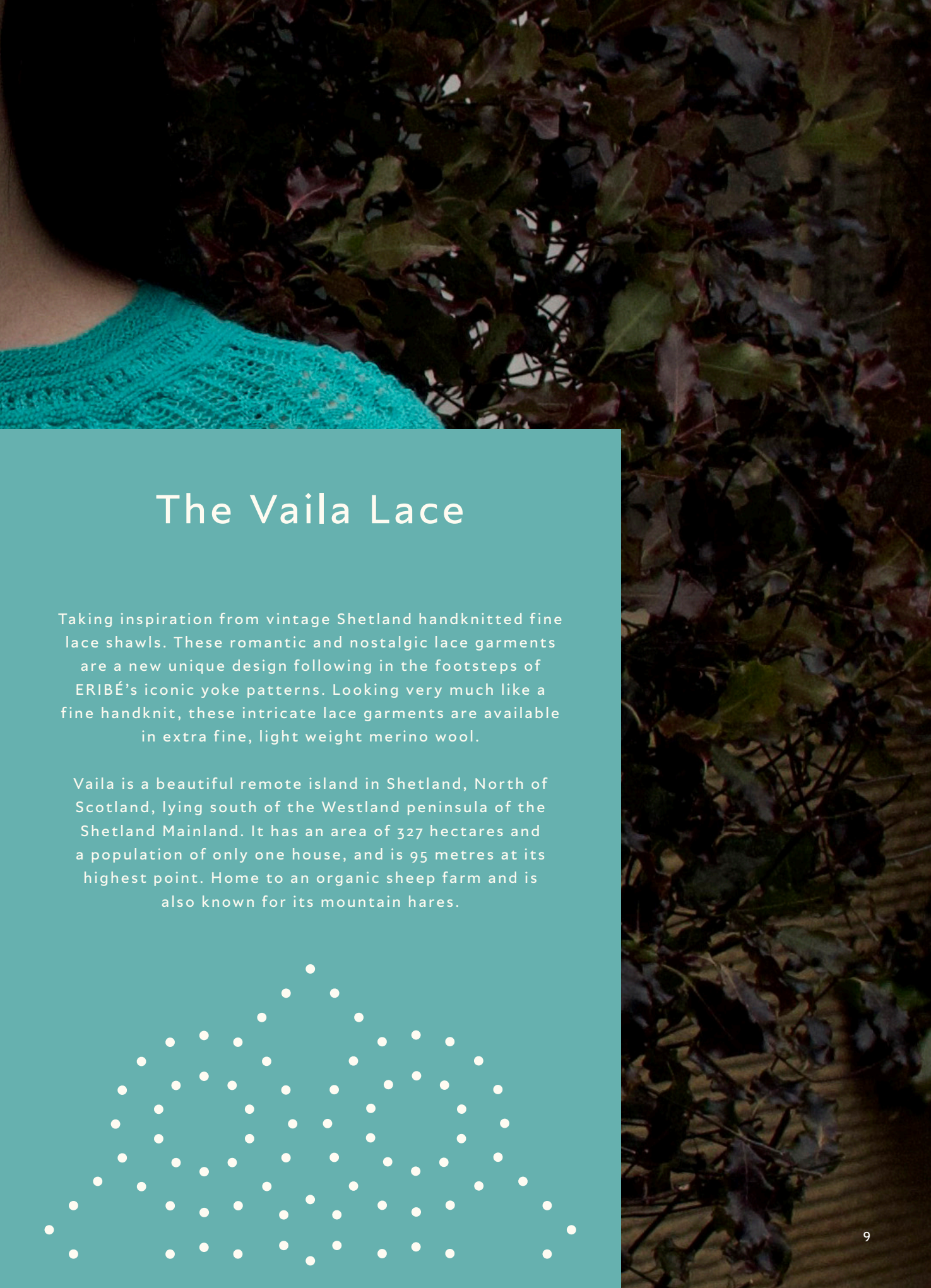
72 - 75



THE ACCESSORIES

76 - 79





The Vaila Lace

Taking inspiration from vintage Shetland handknitted fine lace shawls. These romantic and nostalgic lace garments are a new unique design following in the footsteps of ERIBÉ's iconic yoke patterns. Looking very much like a fine handknit, these intricate lace garments are available in extra fine, light weight merino wool.

Vaila is a beautiful remote island in Shetland, North of Scotland, lying south of the Westland peninsula of the Shetland Mainland. It has an area of 327 hectares and a population of only one house, and is 95 metres at its highest point. Home to an organic sheep farm and is also known for its mountain hares.



Vaila Lace Sweater

STYLE NO: P4382

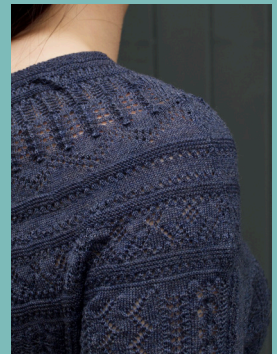
100% Wool

SIZES: XS / S / M / L / XL / XXL

SLIM FIT

Fine lace yoke sweater, round neck with long sleeves. Beautifully made with fine merino lace knit, scalloped edging to collar, cuff and rib with yoke detail.

AVAILABLE IN 5 COLOURS.



Vaila Lace Cardigan

STYLE NO: C4377

100% Wool

SIZES: XS / S / M / L / XL / XXL

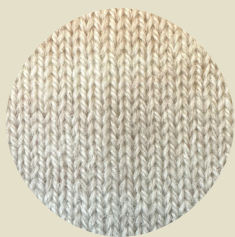
SLIM FIT

Fine lace yoke crew neck cardigan, round neck with long sleeves and pearl button detail. Beautifully made with fine merino lace knit, scalloped edging to collar, cuff and rib with yoke detail.

AVAILABLE IN 5 COLOURS.



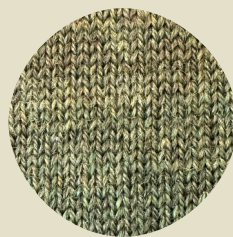
The Vaila Lace Colours



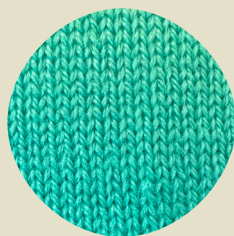
Oatmeal



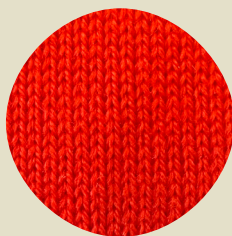
Denim Blue



Olive



Emerald



Electric Red





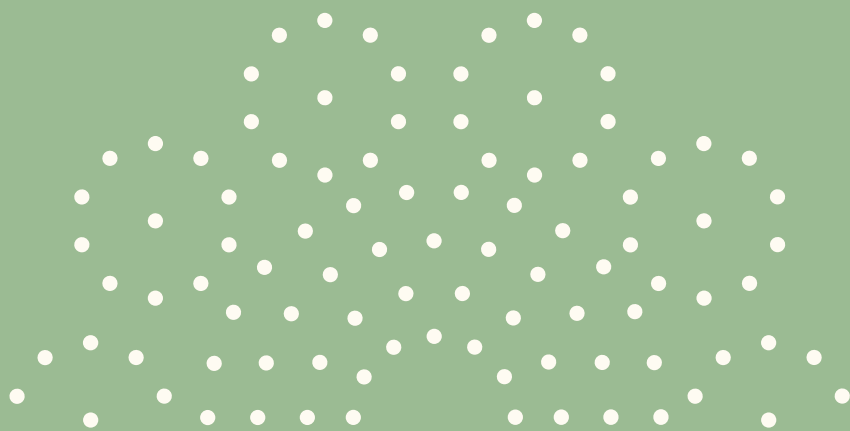
The Tweed Nep

Knitted in our modern version of Shetland wool.

This collection uses a yarn exclusive to us, in rustic colours which carry a tweed nep, hence the name. The yarn itself blends many colours and has a colourful speckle, which adds a lovely depth and tweediness to the texture. Designed in simple utility style the garments pockets, rib and neck have fun contrasting colour trims detail that highlight some of the colours from the nep itself.

The shoulders and elbow patches use a garter stitch to add craft and texture.

The colours chosen for this collection strongly reflect the more rugged elements of the Scottish landscape and bring a nostalgic, homespun simple feel to the range.





Tweed Nep Vest

STYLE NO: V4353

100% Soft Shetland Lambswool

SIZES: XS / S / M / L / XL / XXL

RELAXED FIT

A versatile sleeveless vest with textured shoulder detail, practical front pockets and contrast colour rolled trim at ribbed hem and pocket.

AVAILABLE IN 7 COLOURS.



Tweed Nep Sweater

STYLE NO: P4354

100% Soft Shetland Lambswool

SIZES: XS / S / M / L / XL / XXL

RELAXED FIT

A contemporary boxy shaped sweater with subtle elbow patch texture, practical front pockets. Contrast colour rolled trim at cuff, neckline and pocket.

AVAILABLE IN 7 COLOURS.

The Tweed Nep Colours

VEST / SWEATER



Dune



Reed



Splash



Sand



Desert



Pine



Bark





Alpine Sweater CLASSIC

STYLE NO: P3974

96% Merino Lambswool 4% Angora

SIZES: XS / S / M / L / XL / XXL

REGULAR FIT

Fairisle pattern yoke sweater with pattern on hem and cuff, finished with a touch of luxury angora in the yoke to add indulgence and soft texture. Extra long cuffs to keep your hands warm and with a slightly shaped waist.

AVAILABLE IN 16 COLOURS.



Alpine Cardigan CLASSIC

STYLE NO: C3735

96% Merino Lambswool 4% Angora

SIZES: XS / S / M / L / XL / XXL

SLIM FIT

Fairisle pattern yoke cardigan with shell buttons, pattern on hem and cuff, finished with a touch of luxury angora in the yoke to add indulgence and soft texture. Extra long cuffs to keep your hands warm and with a slightly shaped waist.

AVAILABLE IN 16 COLOURS.



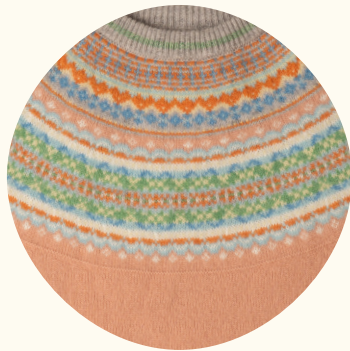
ALPINE CARDIGAN CLASSIC / ROMANCE

The Alpin

CLASSIC SWEATER /
SHORT SWEATER /



Romance



Honeysuckle*



Copperleaf*



Sage



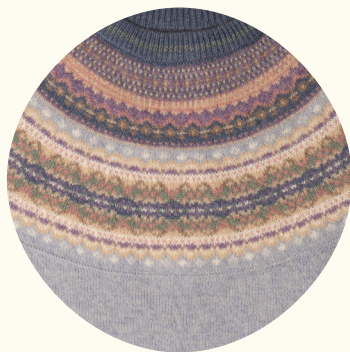
Taurus



Braemar



Heather*

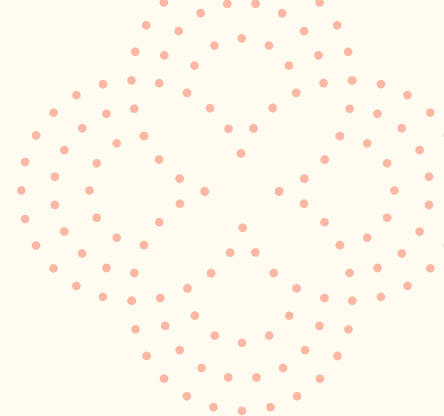


Dove*

* Limited production C

e Colours

CLASSIC CARDIGAN
SHORT CARDIGAN



Aqua*



Findhorn*



Bellarose*



Blue Morning



Dazzle*



Luscious*



Tango*



Jazz*

CHAPTER ONE: 2026 only



Alpine Short Sweater

STYLE NO: P4250

100% Merino Lambswool

SIZES: XS / S / M / L / XL / XXL

SLIM FIT

The short sweater has Fairisle pattern detail on shoulder and cuffs, hip length with long cuff. Designed to sit with high waisted trousers, skirts and dresses and suit a shorter body length.

AVAILABLE IN 16 COLOURS.



Alpine Short Cardigan

STYLE NO: C4249

100% Merino Lambswool

SIZES: XS / S / M / L / XL / XXL

SLIM FIT

The short cardigan has Fairisle pattern detail on the shoulder and cuffs, hip length with long cuff and shell buttons. Designed to sit with high waisted trousers, skirts and dresses and suit a shorter body length.

AVAILABLE IN 16 COLOURS.



ALPINE SHORT SWEATER / SAGE

ERIBÉ

23



Alpine Coat*

STYLE NO: C4316

100% Merino Lambswool

SIZES: S / M / L / XL LENGTH: (M) 90CM

REGULAR FIT

An above the knee length cardigan-coat with pockets and beautiful Fairisle pattern detail around the shoulders. Ideal for a comfortable and sustainable alternative to a traditional coat.

AVAILABLE IN 5 COLOURS.



The Alpine Coat Colours*



Dove*



Taurus*



Blue Morning*



Braemar*



Tango*

* Limited production CHAPTER ONE : 2026 only



ALPINE COAT / BLUE MORNING

ERIBÉ

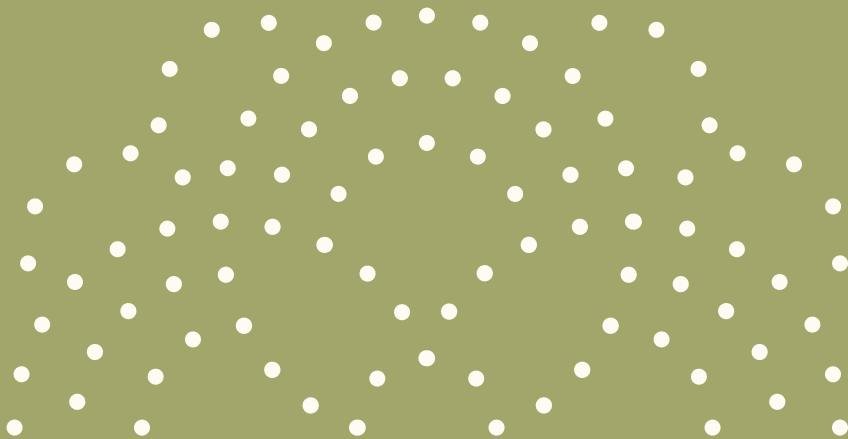
25





The Westray

With more than a nod to nostalgia, this Collection is inspired by Fairisle designs and handknit techniques from Shetland, in the far North East of Scotland. Made with a modern version of Shetland wool for a contemporary Scottish look and feel. The wonderful wool moulds to your body shape over time or size up if you prefer a loose fit. These authentic Scottish garments are made in Scotland in our own factory.





Westray Cardigan

STYLE NO: C4199 / C4199-NZ

100% Soft Shetland Wool

SIZES: XS / S / M / L / XL

REGULAR FIT

Over-hip length Fairisle cardigan with horn buttons, traditional striped pattern detail on hem and cuff. Knitted in 100% Shetland supersoft wool.

AVAILABLE IN 11 COLOURS.



Westray Sweater

STYLE NO: P4202 / P4202-NZ

100% Soft Shetland Wool

SIZES: XS / S / M / L / XL

REGULAR FIT

Over-hip length Fairisle sweater with traditional striped pattern detail on hem and cuff. Knitted in 100% Shetland supersoft wool.

AVAILABLE IN 11 COLOURS.

The Westray Colours

SWEATER / CARDIGAN / VEST



Mallaig



Cotswold



Glencoe



Torridon



Banff



Strachan



Portree



St. Kilda



Killearn



Caithness



Aberfoyle



Westray Vest

STYLE NO: V4247 / V4247-NZ

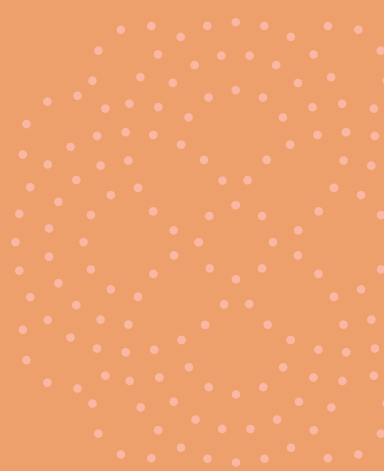
100% Soft Shetland Wool

SIZES: XS / S / M / L / XL

REGULAR FIT

Fairisle vest with scoop round neck, straight shape and traditional striped pattern detail on hem and armhole, knitted in supersoft wool.

AVAILABLE IN 11 COLOURS - SEE PAGE 47







Westray Block Sweater

STYLE NO: P4331 / P4331-NZ

100% Soft Shetland Wool

SIZES: XS / S / M / L / XL

RELAXED FIT

A modern colourblock take on our Westray Sweater. In a more contemporary boxy cut. Collar, cuff and back panel block colours are all taken from detail of the front Fairisle pattern. Knitted in 100% Shetland supersoft wool.

AVAILABLE IN 9 COLOURS

The Westray Colours

BLOCK SWEATER



Mallaig



Glencoe



St. Kilda



Banff



Strachan



Killearn



Portree



Caithness



Aberfoyle

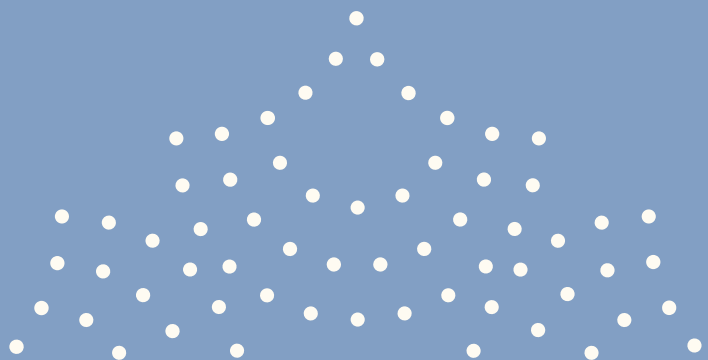


The Kinross

Inspired by the natural beauty of our Scottish landscape and traditional patterns from Shetland and Fair Isle. Kinross garments are lovingly made with a premium ultra-soft superfine merino lambswool that feels like cashmere - soft and lightweight. Kinross styles combine traditional techniques with signature ERIBÉ colouring to create contemporary statement pieces that stand out from the crowd.

The land and the animals are ethically looked after and visited each year to support farmers. This certificate can only be used on virgin wool. By investing in RWS certified wool you show your customers that you care about fair trade, sustainability, and the wellbeing of sheep and land across the world. The RWS trademark recognises the best and most reliable farmers.

Made in the EU with Scottish spun yarn. Fully traceable, and guaranteed non-mulesed. 100% Superfine Merino Lambswool. RWS Certified yarn.







Kinross Sweater

STYLE NO: P4218

100% Superfine Merino Lambswool

SIZES: XS / S / M / L / XL / XXL

REGULAR FIT

An ultra soft, colourful Fairisle Sweater made with a premium, ultra-soft superfine merino lambswool. Featuring distinctive striped trims and graphic motifs from traditional hand-knitted Shetland Fairisles. Authentic floats on the inside of the garment provide a layer of extra warmth.

AVAILABLE IN 10 COLOURS.



Kinross Cardigan

STYLE NO: C4302

100% Superfine Merino Lambswool

SIZES: XS / S / M / L / XL / XXL

REGULAR FIT

Cardigan version of our ultra soft Fairisle Kinross Sweater finished with horn buttons and traditional striped pattern detail on hem and cuff.

AVAILABLE IN 10 COLOURS.

The Kinross Colours

SWEATER / CARDIGAN



Foxglove



Coral



Mural



Chakra



Furnace



Agate



Frolic



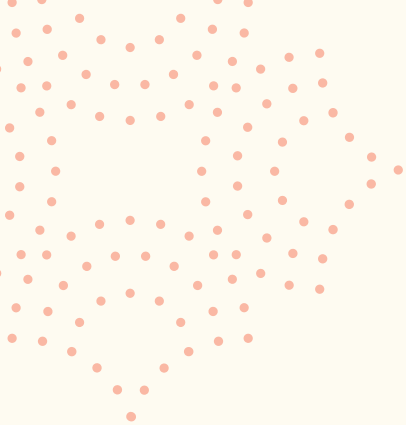
Sapphire



Loden



Prelude



The Kinross Colours

KINROSS HOODY SWEATER*



Foxglove*



Coral*



Mural*



Chakra*



Furnace*



Agate*



Frolic*



Sapphire*



Loden*



Prelude*

* Limited production CHAPTER ONE : 2026 only



KINROSS HOODY / FURNACE



Kinross Hoody Sweater*

STYLE NO: P4317

100% Superfine Merino Lambswool

SIZES: XS / S / M / L / XL / XXL

REGULAR FIT

This sporty hoody sweater feels soft and luxurious. Knitted closer than the Kinross sweater for extra warmth, and a glamorous alternative. With rib hems, knitted hood and wool cord.

AVAILABLE IN 10 COLOURS.



KINROSS WAISTCOAT / CHAKRA



Kinross Waistcoat

STYLE NO: V4318

100% Superfine Merino Lambswool

SIZES: XS / S / M / L / XL

REGULAR FIT

A vintage inspired regular fit, vee neck waistcoat that gives a stylish, flattering effect due to the long rib hem that hugs the hips. It feels like soft cashmere, while slightly thicker than the Corry collection.

AVAILABLE IN 10 COLOURS.

The Kinross Colours

KINROSS WAISTCOAT



Foxglove



Coral



Mural



Chakra



Furnace



Agate



Frolic



Sapphire



Loden



Prelude

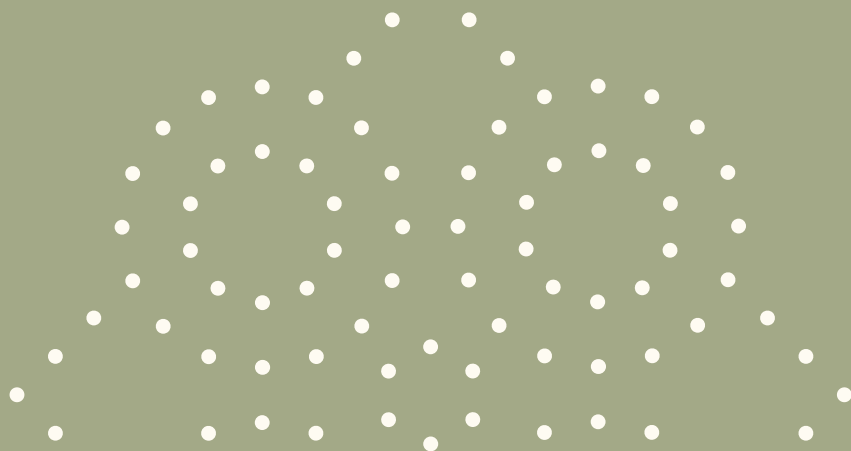




The Montrose

Two relaxed fits with eyecatching designs and solid colours - easy to wear with unique vertical patterns details such as Guernsey rib, tweed textures and special 'Milkchurn' Fairisle pattern.

Made with 100% Merino lambswool, this knitting technique gives a flattering drape for comfort and individuality in both the Blanket Coat and Cowl Neck Sweater. Made in EU.





Montrose Blanket Coat

STYLE NO: C4141

100% Merino Lambswool

ONE SIZE

OVERSIZED FIT

A versatile mid-thigh length coat, jacket or throw on, with practical deep pockets. Turn upside down for extra warmth around the shoulder or to wear elegantly as a shrug with a dress. This garment can be worn like a blanket, and is ideal for those temperature changing moments; a wonderful live-in garment for all occasions.

AVAILABLE IN 6 COLOURS.



Montrose Cowl Neck Sweater

STYLE NO: P4332

100% Merino Lambswool

ONE SIZE

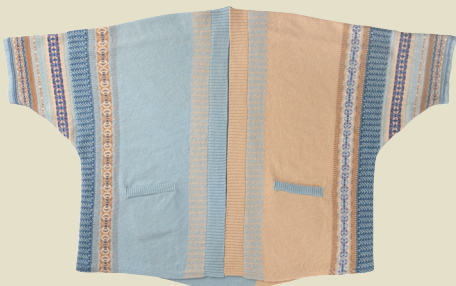
OVERSIZED FIT

A versatile mid-thigh length throw over sweater. With a loose but cosy Cowl Neck and a flattering drape design. This garment can be worn like a blanket, and is ideal for those temperature changing moments; a wonderful live-in garment for all occasions. .

AVAILABLE IN 6 COLOURS.

The Montrose Colours

BLANKET COAT / COWL SWEATER



Robyn



Honey



Bracken



Oban Sky



Bramble



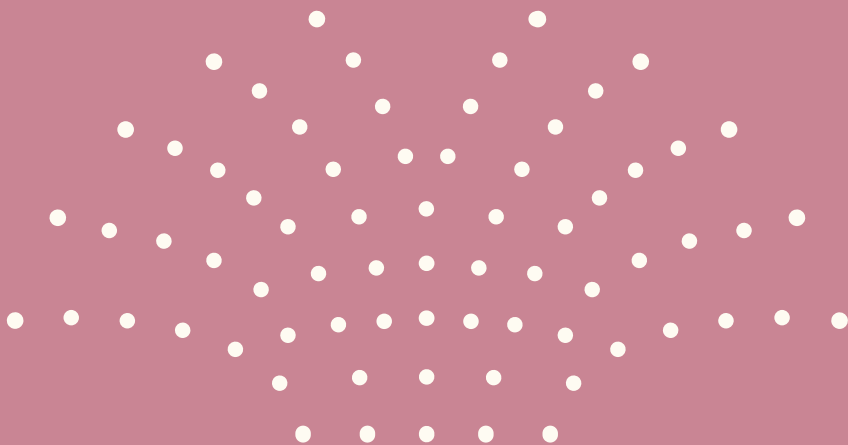
Hermes





The Corry

Our luxe-leisure collection made with the softest 100% Merino wool spun in Yorkshire. Designed for wearability and comfort, these garments can be added into a wardrobe to wear on any occasion. This collection also offers ERIBÉ colour vibrancy without the pattern, to bring diversity to your ERIBÉ store display. This collection has sustainability at its heart. Designed to replace cotton basics and enable conscious wearing. The garments provide breathability and regulate body temperature, needing less washing. They are also unisex so can be shared in the household. The source material carries the RWS certification for traceability and sustainability and carries a far lower footprint than typical cotton basic alternatives.





Corry Ladies Raglan Sweater

STYLE NO: P4130

100% Merino Lambswool

SIZES: XS / S / M / L / XL / XXL

RELAXED FIT

This ERIBÉ classic shape was designed using the artist's smock top as inspiration. The collar and hems can roll inside or out and be made shorter or longer as desired. The bottom hem has small open side vents.

AVAILABLE IN 14 COLOURS.



Corry V-Neck Tank Top

STYLE NO: V4232

100% Merino Lambswool

SIZES: XS/S / S/M / M/L / L/XL / XL/XXL

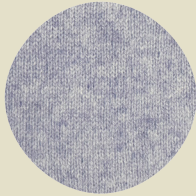
SLIM FIT / RELAXED FIT

Minimalist on design, functional with two pockets. Wear over a dress, shirt or t-shirt for extra warmth and to add a stylish look to your wardrobe. The dual size allows you to choose slim fit or regular fit.

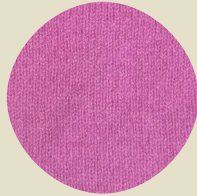
AVAILABLE IN 14 COLOURS.

The Corry Colours

RAGLAN SWEATER / V-NECK TANK TOP
CORRY TOP / T-SHIRT SWEATER



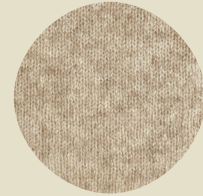
Pale Lavender



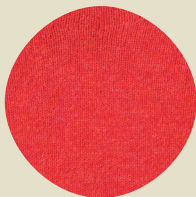
Thulian



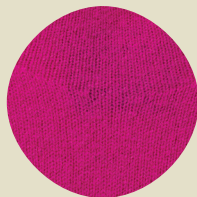
Angelite



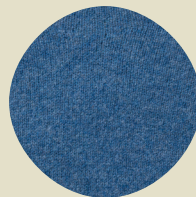
Linen



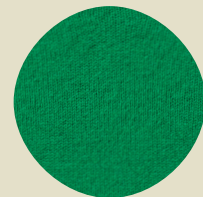
Inferno



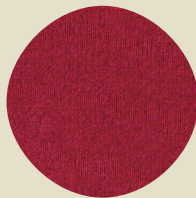
Honesty



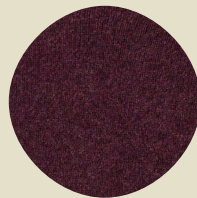
Jeans



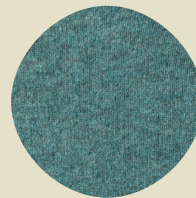
Billiard



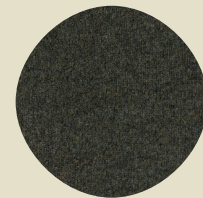
Poppy Melange



Blackgrape



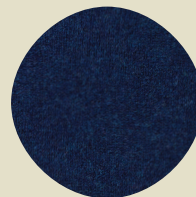
Caspian



Seaweed



Driftwood



Regatta



CORRY HOODY SWEATER / HONESTY



Corry Hoody Sweater

STYLE NO: P4273

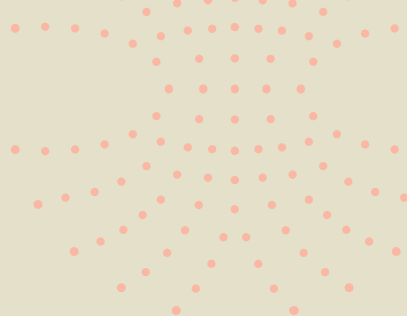
100% Merino Lambswool

SIZES: XS/S / S/M / M/L / L/XL / XL/XXL / XXL

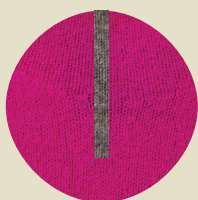
RELAXED FIT

This hoody is soft and flattering with chunky knitted ties in a contrasting colour. Unique and subtle shaping details around the chest and shoulders, with no ribs, makes it easy to wear. The perfect luxe-loungewear for comfort, travel and style. Size up for a looser fit.

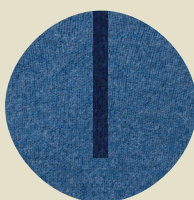
AVAILABLE IN 8 COLOURS.



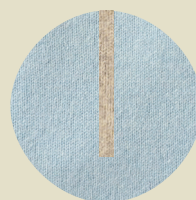
The Corry Hoody Colours



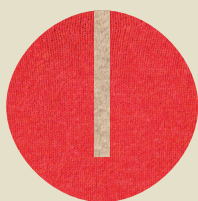
Honesty (BASE) /
Grey Mix (CONTRAST)



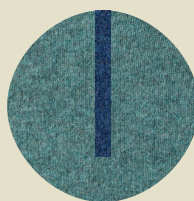
Jeans (BASE) /
Regatta (CONTRAST)



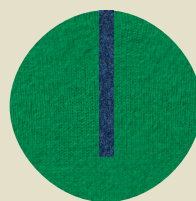
Angelite (BASE) /
Oatmeal (CONTRAST)



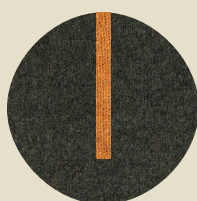
Inferno (BASE) /
Cobble (CONTRAST)



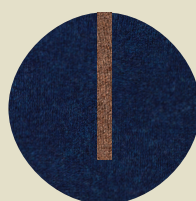
Caspian (BASE) /
Rhapsody (CONTRAST)



Billiard (BASE) /
Rhapsody (CONTRAST)



Seaweed (BASE) /
Gazelle (CONTRAST)



Regatta (BASE) /
Tobacco (CONTRAST)



Corry Top

STYLE NO: P4127

100% Merino Lambswool

SIZES: XS / S / M / L / XL

REGULAR FIT

An easy to wear soft relaxed fit top with a flattering small cross over vee detail at the front of the round neck. For a slimmer fit, size down.

AVAILABLE IN 14 COLOURS.



Corry T-Shirt Sweater

STYLE NO: P4271

100% Merino Lambswool

SIZES: XS / S / M / L / XL / XXL

RELAXED FIT

At last a fine woollen long sleeve t-shirt that is soft, comfortable and flattering. With a small rib collar and no trims on cuffs or hips for easy wear and a relaxed stylish look. This garment is unisex with a boyfriend fit. For womenswear this garment can be sized down from usual size.

AVAILABLE IN 14 COLOURS.



CORRY TOP / PALE LAVENDER / THULIAN



Corry Mens Raglan Sweater

STYLE NO: P4164

100% Fine Merino Wool

SIZES: XS / S / M / L / XL

RELAXED FIT

This ERIBÉ classic shape was designed using the Cornish artist's smock top as inspiration. The collar and hems can roll inside and out and made shorter or longer as desired. Easy to wear, this garment gives a relaxed stylish look with ultimate comfort.

AVAILABLE IN 10 COLOURS.



Corry T-Shirt Sweater

STYLE NO: P4271

100% Fine Merino Wool

SIZES: XS / S / M / L / XL / XXL

RELAXED FIT / UNISEX

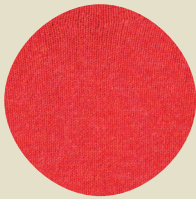
A fine woollen long sleeve T-shirt that is soft and comfortable. A small rib single collar and no trims on cuffs and hips for an easy wear with maximum comfort.

AVAILABLE IN 10 COLOURS.

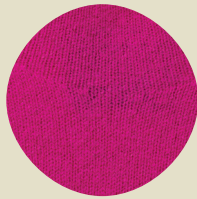


The Corry Colours

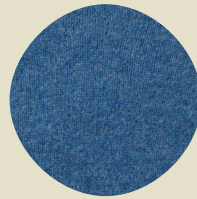
MENS RAGLAN SWEATER / T-SHIRT SWEATER



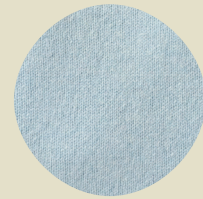
Inferno



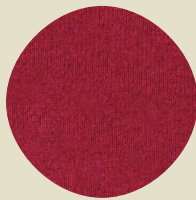
Honesty



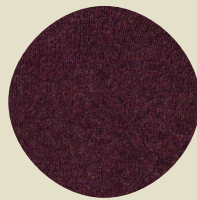
Jeans



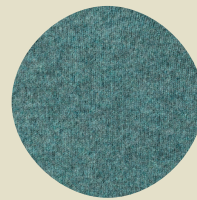
Angelite



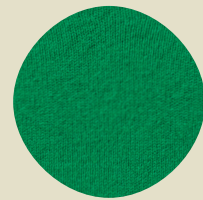
Poppy Melange



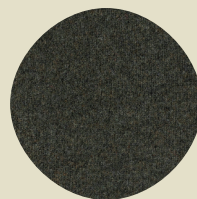
Blackgrape



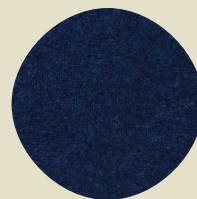
Caspian



Billiard



Seaweed



Regatta



Corry Hoody Sweater

STYLE NO: P4273

100% Fine Merino Wool

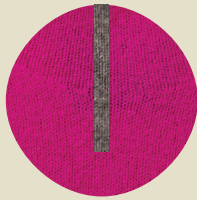
SIZES: XS/S / S/M / M/L / L/XL / XL/XXL / XXL

RELAXED FIT / UNISEX

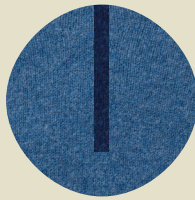
This hoody has knitted wool ties in a contrasting colour. Unique and subtle yoke shaping details around the chest and shoulders, with no ribs makes this sweater easy to wear. Select a larger sizes for a looser fit. A more sustainable choice for your customer over a cotton basics hoody.

AVAILABLE IN 8 COLOURS.

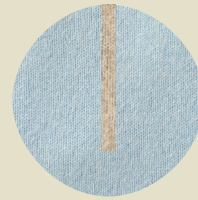
The Corry Hoody Colours



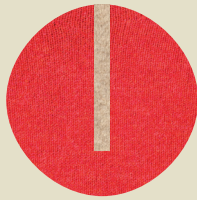
Honesty (BASE) /
Grey Mix (CONTRAST)



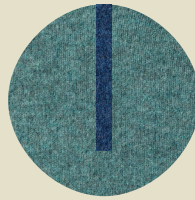
Jeans (BASE) /
Regatta (CONTRAST)



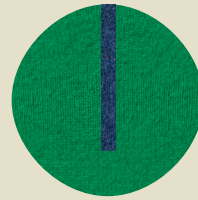
Angelite (BASE) /
Oatmeal (CONTRAST)



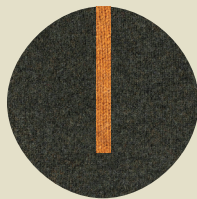
Inferno (BASE) /
Cobble (CONTRAST)



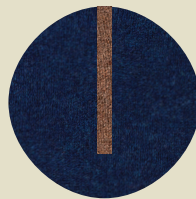
Caspian (BASE) /
Rhapsody (CONTRAST)



Billiard (BASE) /
Rhapsody (CONTRAST)



Seaweed (BASE) /
Gazelle (CONTRAST)



Regatta (BASE) /
Tobacco (CONTRAST)



The Brodie

Our new Brodie is designed with a contemporary plain 2/2 rib. Essential, live-in, garments with an all-over fairisle pattern for everyday style and practicality.

This Collection is inspired by original Fairisle designs and handknit techniques from the Shetland Islands in the far North East of Scotland. Knitted in a modern Shetland wool for a contemporary Scottish look and feel. This wonderful wool traps air to create natural insulation. This gently regulates your body heat, keeping you warm on colder days and comfortable when indoors.



Brodie Rib Sweater

STYLE NO: P4352

100% Soft Shetland

SIZES: XS / S / M / L / XL / XXL

RELAXED FIT

A mid-weight round neck sweater in all over fairisle pattern with firm 2/2 rib hem and cuffs.

AVAILABLE IN 8 COLOURS.



Brodie Rib Vest

STYLE NO: V4351

100% Soft Shetland

SIZES: XS / S / M / L / XL / XXL

RELAXED FIT

A mid-weight V-Neck vest in all over fairisle pattern with 2/2 rib trims

AVAILABLE IN 8 COLOURS.



The Brodie Colours

RIB SWEATER /RIB VEST



Ash



Moffat



Gifford



Lovage



Kingfisher



Nisbet



Cliff



Woodland



The Brora

These stylish lightweight garments are knitted in beautiful modern Shetland and Tweed Nep yarns. The yarns are chosen for their richness and depth of colour that give a reminiscent nostalgic feel of the more rustic elements of Scotland's natural environment. The garment is styled to suit both men and women with a contemporary cut and more than a hint of traditional values.



Brora Sweater

STYLE NO: P4324

100% Soft Shetland

SIZES: S / M / L / XL / XXL

REGULAR FIT / UNISEX

A classic round neck sweater with a difference:
The difference is in the choice of 7 exciting
colour options.

AVAILABLE IN 7 COLOURS.



Brora Vest

STYLE NO: V4356

100% Soft Shetland

SIZES: XS / S / M / L / XL

REGULAR FIT / UNISEX

A classic versatile round neck vest with utility style pocket.

AVAILABLE IN 7 COLOURS.



The Brora Colours

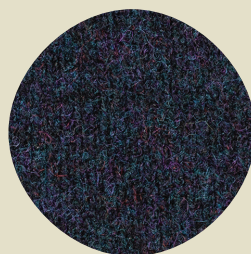
UNISEX SWEATER / UNISEX VEST



Teasel



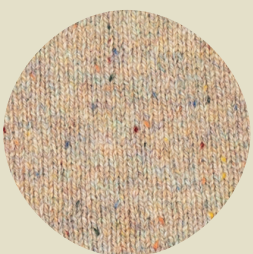
Damson



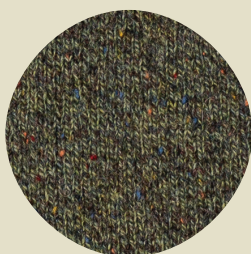
Black Grouse



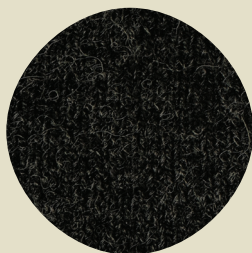
Desert



Sand



Pine



Raven



The Bruar Falls

A fresh take on our well loved Bruar sweater.

The Bruar Falls collection replaces Bruar this year, same style and garment with all new yarn. The new yarn colours add complexity and texture to the look and feel of the sweater. A flattering fit, for all ages,

Bruar is a versatile mid-weight knit giving an authentic, traditional look and feel.



Bruar Falls Sweater

STYLE NO: P4369

100% Soft Shetland

SIZES: XS / S / M / L / XL / XXL

REGULAR FIT

A mid weight sweater with slight upturned round neck. Stripe mock rib detail on the neck, hem and cuff for an authentic traditional look.

AVAILABLE IN 6 COLOURS.

The Bruar Falls Colours



Prato



Mustard



Steppa



Beaver



Cobb



Karel



The Stoneybrek

Our Stoneybrek sweater combines the comfort and warmth of beautifully soft Merino lambswool with signature ERIBÉ styling to create a year round staple you'll turn to time and again. With a flattering circular Fairisle yoke and chunky hand-knit look, the Stoneybrek is great for all seasons thanks to its garter stitch construction. Ideal for any outdoor activity or relaxing at home. Made in EU.



Stonybrek Sweater

STYLE NO: P4148

100% Merino Lambswool

SIZES: XS / S / M / L / XL / XXL

RELAXED FIT

Round neck sweater with a distinctive Scottish patterned graphic yoke around the neck with garter stitch textured body for a handknitted look. Warm and comfortable for everyday living, especially outdoors.

AVAILABLE IN 6 COLOURS.

The Stoneybrek Colours



Arctic



Spike



Aries



Lyon



Nightfall



Red Oak





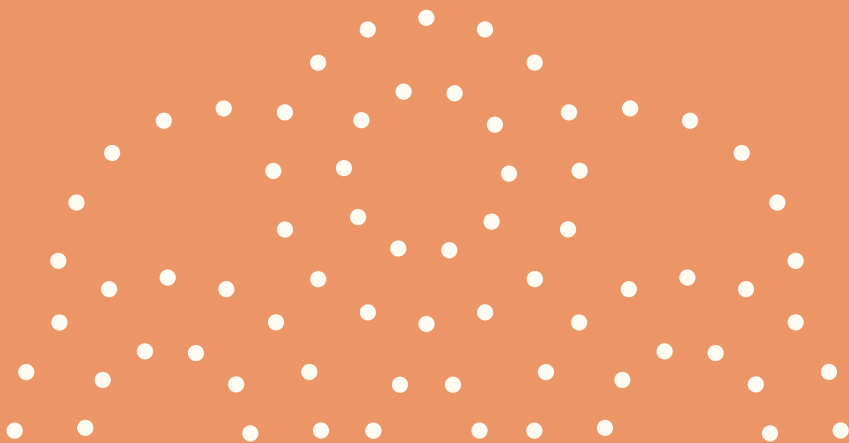
The Accessories

Our colourful accessories offer an unrivalled variety of texture, colour and pattern to bring joy to your customers.

ERIBÉ's Treeline Wrap complements the collection in both colour and design so that you can merchandise displays to suit your retail collection.

The Treeline Wrap is offered in a wide selection of colours to match all garments available.

If you are interested in ordering Alloa accessories, please contact our sales team who may have stock they can offer you.





TREELINE WRAP / HONESTY



Jeans

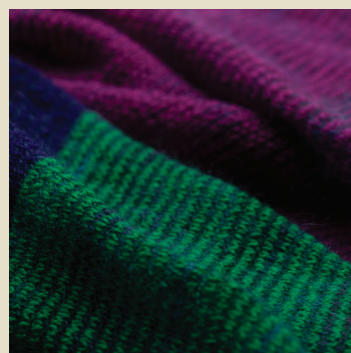
Bubblegum

Honesty

Bellarose

Lingonberry

Vole



Treeline Wrap

STYLE NO: S4152

80% Lambswool 20% Kid Mohair

ONE SIZE (185 x 85CM)

MADE IN SCOTLAND

Beautifully soft and lightweight wrap giving volume in subtly changing colours and block stripes with a touch of luxury super-kid mohair.





Size Information

ERIBÉ USES SIZE LABELS 'XS-XXL' BUT AS A ROUGH GUIDE, THESE RELATE TO NATIONAL SIZES (SEE BELOW). WE ALSO OFFER 'SPLIT SIZING' ON CERTAIN STYLES, WHICH FALL BETWEEN THE TWO 'FULL' SIZES, THE WEAR OF THE SMALLER SIZE IS A SNUGGER FIT, AND THE LARGER IS MORE RELAXED.

WOMENS

ERIBÉ SIZES	XS	S	M	L	XL	XXL
UK / AUS	6-8	8-10	10-12	12-14	14-16	16-16
EUROPEAN	36	38	40	42	44	46
US	4-6	6-8	8-10	10-12	12-14	14-16

MENS

ERIBÉ SIZES	XS	S	M	L	XL	XXL
UK / AUS / US	36"	38"	40"	42"	46"	48"
EUROPEAN	44	46	48	52	54	56

WE OFFER A RANGE OF DIFFERENT FITS DEPENDENT ON INDIVIDUAL STYLES, EACH WITH THE APPROXIMATE MEASUREMENTS AS THE CHARTS BELOW. SOME STYLES WILL DIFFER, SUCH AS 'LONGLINE' STYLES WITH ADDED LENGTH. DUE TO THE NATURAL PROPERTIES OF WOOL, GUIDELINE FOR SIZE, TOLERANCE UP TO 2CM.

WOMEN'S SLIM FIT

STYLES:

VAILA LACE SWEATER, VAILA LACE CARDIGAN, VAILA LACE CAMISOLE, ALPINE CARDIGAN, ALPINE SHORT CARDIGAN, ALPINE SHORT SWEATER.

ERIBÉ SIZES	XS	S	M	L	XL	XXL
CHEST WIDTH	41CM	44CM	47CM	50CM	53CM	56CM



WOMEN'S REGULAR FIT

STYLES:

STICHILL SLEEVELESS TOP, STICHILL SHORT SLEEVE SWEATER, STICHILL LONG SLEEVE SWEATER, SAILOR CREW NECK LONG SLEEVE SWEATER, SAILOR CREW NECK CARDIGAN, SAILOR SHORT SLEEVE SWEATER, EVIE CREW NECK SWEATER, EVIE CREW NECK CARDIGAN, MELROSE TWEED SWEATER, MELROSE TWEED TUNIC, MELROSE TWEED CARDIGAN, ALPINE SWEATER, ALPINE COAT, CORRY TOP, WESTRAY CARDIGAN, WESTRAY SWEATER, WESTRAY VEST, KINROSS SWEATER, KINROSS CARDIGAN, KINROSS HOODY SWEATER, KINROSS WAISTCOAT.

ERIBÉ SIZES	XS	S	M	L	XL	XXL
CHEST WIDTH	44CM	47CM	50CM	53CM	56CM	59CM

WOMEN'S RELAXED FIT

STYLES:

CORRY LADIES RAGLAN SWEATER, CORRY TANK TOP, CORRY HOODY SWEATER, CORRY T-SHIRT SWEATER, WESTRAY BLOCK SWEATER, TWEED NEP VEST, TWEED NEP SWEATER.

ERIBÉ SIZES	XS	S	M	L	XL	XXL
CHEST WIDTH	48CM	51CM	54CM	58CM	61CM	64CM

MEN'S REGULAR FIT

STYLES:

BRUAR FALLS SWEATER, BRORA SWEATER, BRORA UNISEX VEST

ERIBÉ SIZES	XS	S	M	L	XL	XXL
UK / AUS	47CM	50CM	53CM	56CM	60CM	64CM

MEN'S RELAXED FIT

STYLES:

BRODIE RIB SWEATER, BRODIE RIB VEST, STONEYBREK SWEATER, CORRY T-SHIRT SWEATER.

ERIBÉ SIZES	XS	S	M	L	XL	XXL
CHEST WIDTH	49CM	52CM	55CM	58CM	62CM	66CM

STYLES:

MENS CORRY RAGLAN SWEATER, CORRY HOODY SWEATER.

ERIBÉ SIZES	XS	S	M	L	XL	XXL
CHEST WIDTH	51CM	54CM	57CM	60CM	63CM	66CM

FOR SIZING PURPOSES, THE MODELS ARE BOTH OVER 5'8", UK SIZES 8 AND 10, AND WEARING ERIBÉ SIZE SMALL.

PLEASE NOTE: ALL SIZE CHARTS SHOWN ARE A GUIDELINE ONLY.

FOR MORE DETAILED SIZE GUIDES, PLEASE REFER TO OUR TRADE PORTAL.

Caring for your ERIBÉ Knitwear

IT IS PERFECTLY NORMAL THAT WHEN YOU FIRST WEAR A PURE WOOL GARMENT, LOOSE FIBRES NEAR THE SURFACE RUB TOGETHER DURING MOVEMENT AND FORM LITTLE BALLS OF WOOL KNOWN AS PILLING OR BOBBLING. WE HAVE PUT TOGETHER THIS SIMPLE GUIDE TO HELP YOU BEAT THE BOBBLES AND KEEP YOUR ERIBÉ GARMENT LOOKING FANTASTIC FOR MANY YEARS TO COME...

1

HANDWASH IS BEST

THIS IS THE GENTLEST WAY TO WASH YOUR KNITWEAR AND THE BEST WAY TO AVOID SHRINKAGE AND MINIMISE PILLING. WASH BY HAND IN TEPID WATER.

2

WASH INSIDE OUT

ANY PILLING CAUSED BY WASHING WILL BE ON THE INSIDE NOT THE OUTSIDE.

3

USE LIQUID SOAP

ADD A SMALL AMOUNT OF LIQUID HAND SOAP AND SOAK THE GARMENT IN LUKEWARM WATER FOR 5 MINUTES. NEVER USE REGULAR WASHING DETERGENT AS THIS CAN DAMAGE THE FIBRES.

4

SQUEEZE, DON'T RUB

TO WASH THE GARMENT YOU MUST GENTLY SQUEEZE, WITHOUT RUBBING, THE GARMENT IN THE WATER. LAY YOUR DAMP GARMENT ON A LARGE BATH TOWEL. GENTLY ROLL THE TOWEL AND THE GARMENT TOGETHER MUCH LIKE A SWISS ROLL TO REMOVE THE EXCESS WATER.

5

AIR DRY FLAT

PULL GENTLY TO SIZE AND ALLOW TO DRY FLAT ON A CLEAN TOWEL AWAY FROM DIRECT HEAT SOURCES SUCH AS RADIATORS. WHEN DRY, PRESS TO SHAPE USING A DAMP TOWEL OR LIGHTLY STEAM BY HOLDING A STEAM IRON JUST ABOVE THE SURFACE OF THE GARMENT.

6

REMOVE ANY PILLING

WHEN THE GARMENT IS COMPLETELY DRY, GENTLY REMOVE THE SMALL PILLS EITHER BY HAND OR WITH A HAND-HELD SWEATER COMB – NEVER USE SCISSORS. BY DOING THIS AFTER EACH OF THE FIRST 3-4 WASHES, YOU WILL FIND THAT THE PILLING SUBSIDES AND WILL EVENTUALLY DISAPPEAR.

Forward Ordering Deadline

AT ERIBÉ WE KNIT TO ORDER, WHICH MEANS WHEN YOU PLACE AN ORDER WITH US, WE LOVINGLY KNIT EACH GARMENT ON YOUR ORDER, JUST FOR YOU. DUE TO THE HANDCRAFTED NATURE OF OUR PRODUCT AND USE OF HIGH-QUALITY NATURAL MATERIAL WHICH WE PRE-ORDER; THIS PROCESS TAKES MONTHS TO COMPLETE. SO PLEASE ORDER AS SOON AS POSSIBLE TO ENSURE WE STILL HAVE SPACE TO KNIT ESPECIALLY FOR YOU. OUR CAPACITY IS LIMITED, AND WE MAY HAVE TO CLOSE ORDER BOOKS EARLY IF SPACE IS FULL, OR ONLY BE ABLE TO OFFER A LATER DELIVERY THAN YOU REQUEST. WITH A WIDE RANGE OF PRODUCTS AND COLOURS, WE OFFER STAGED DELIVERY TIMINGS.

THINGS DO CHANGE... SO PLEASE REFER TO YOUR AGENT OR TRADE PORTAL FOR THE MOST UP TO DATE INFORMATION AND ENSURE YOU ARE SIGNED UP TO RECEIVE OUR NEWSLETTER FOR UPDATED PRODUCT WINDOWS AND NEW OPPORTUNITIES BEYOND THESE DATES.

CHAPTER ONE : 2026 ORDER DEADLINE

STYLES AVAILABLE		DELIVERY TO YOU <small>PLEASE ALLOW THE WHOLE MONTH FOR DELIVERY</small>	DEADLINE FOR YOUR ORDER TO BE WITH ERIBÉ
1ST	FULL COLLECTION	JAN/FEB 2026	TUESDAY 30TH SEPTEMBER 2025
2ND	COLLECTION EDIT	MARCH – MAY 2026	FRIDAY 31ST OCTOBER 2025

WORKING WITH ERIBÉ IN 2025 / 2026

- There is a minimum of 2 pcs per colour on all products ordered.
- £2,000 / €2,000 / \$4,000 AUS minimum spend to order with us.
- New customers will be on proforma terms and can apply for 30-day credit terms following first year review.
- Payments must be made in the currency on the invoice, and to the corresponding bank account.
- Orders totalling over £2,500 / €3,000 come with free carriage within the EU.
- Customer will have 7 days from receipt of order confirmation, or by the next order deadline, whichever is sooner to check any discrepancies, thereafter the order will be deemed accepted and confirmed.
- If customer cancels order more than 8 working days after receiving confirmation, they are responsible to pay a cancellation cost valued at 30% of their order.

If the customer order is received less than 8 days before the deadline, the number of days to cancel is reduced accordingly – orders cannot be changed or cancelled more than one day after the order deadline.

PLEASE SEE FULL TERMS AND CONDITIONS OF ORDERING FOR FULL DETAILS.

HOW TO CONTACT ERIBÉ

SALES / DESIGN / MARKETING / ACCOUNTS / SHOWROOM / DESPATCH / MANUFACTURING

ERIBÉ Knitwear Ltd, Rose House, Dingleton Road, Melrose, TD6 9QY Scotland, UK.

SALES ENQUIRIES: +44 (0)1896 755540 EMAIL: sales@eribe.com

ALL OTHER ENQUIRIES: +44 (0)1896 750952

Placing an Order

PLEASE CONTACT SALES@ERIBE.COM TO GET YOUR SIGN IN DETAILS AND USER GUIDE FOR OUR TRADE PORTAL. VIEW IMAGES OF ALL STYLES AND PRICES IN YOUR CURRENCY ON YOUR OWN PRIVATE ACCOUNT. ERIBÉ STOCK INFORMATION WILL BE ADDED SOON, TO HELP YOU TOP UP WHEN POSSIBLE THROUGHOUT THE YEAR. PLEASE CONTACT OUR TEAM AT SALES@ERIBE.COM TO DISCUSS ANYTHING.

TO PLACE AN ORDER AND FOR DETAILS ON HOW TO SET UP YOUR OWN ERIBÉ TRADE PORTAL ACCOUNT PLEASE CONTACT:

TEL: +44 (0)1896 755540 EMAIL: SALES@ERIBE.COM

AGENTS - UK, EUROPE AND BEYOND



SOUTHERN ENGLAND
CONTACT: Andy Nicholls
TEL: 07967 096 734 EMAIL: andy@eribe.com



SPAIN / RAMON MONTIEL GOMEZ
CONTACT: Ramon Montiel
ADDRESS: c. Sepulveda, 185, 2-2a 08011 Barcelona, Spain
TEL: (+34) 93 451 21 94 / MOB: (+34) 670 09 38 77
EMAIL: rmontiel740@gmail.com



ITALY / HEDA SHOWROOM MILANO
CONTACT: Hera Colombo / Daniele Zanardi
EMAIL: h.colombo@heda.it MOB: +39 331 8997882
EMAIL: d.zanardi@heda.it MOB: +39 347 2820751
SHOWROOM TEL: +39 02 54123995
EMAIL: showroom@heda.it
ADDRESS: Heda Showroom, Via Macedonio
Melloni 37 20129 Milano
www.modemonline.com



AUSTRIA | FREE MOUNTAIN GMBH
CONTACT: Andreas Schmied
ADDRESS: Rupertgasse 4, 5020 Salzburg, Austria
TEL: +43 662 876 108 / MOB: +43 664 2230 640
EMAIL: office@freemountain.at / www.freemountain.at



SOUTH GERMANY | AGENTUR ELKE WIRICHS
CONTACT: Elke Wirichs
ADDRESS: Heinrich-Kley-Str. 12, 80807
München Schwabing, Germany
TEL: +49 89 3230 8100 / MOB: +49 177 3236 627
EMAIL: info@elke-wirichs.com / www.elke-wirichs.com

NORTH GERMANY | WOLLAGENTEN - AGENTUR MUMME
CONTACT: Carsten Mumme
ADDRESS: Kaethe-Kollwitz-Str. 115, 04109 Leipzig, Germany
TEL: +49 151 4190 5377 EMAIL: post@wollagenten.de
www.wollagenten.de



DENMARK / SWEDEN | AN APPAREL AGENCY
CONTACT: Sophie Vang
ADDRESS: Baunevej 19, 3400 Hillerød, Denmark
TEL: +45 53 73 10 11
EMAIL: sophie@anapparel.agency



NORWAY - HELENE AABY AGENTURER
CONTACT: Helene Aaby
ADDRESS: Torvveien 5, 1383 Asker, Norway
TEL: +47 913 03 037 EMAIL: helene@aabysagentur.no
www.maakagency.nl



THE NETHERLANDS / MAAK! FASHION AGENCY
CONTACT: Lucas Hubrecht
ADDRESS: Utrechtseweg 186, 6862 AV Oosterbeek (Nederland)
TEL: +31 (0) 644 100 659 EMAIL: info@maakagency.nl
www.maakagency.nl



SWITZERLAND | THE FERRARI AGENCY
CONTACT: Heidy & Peter Ferrari
ADDRESS: Industriestrasse 57, 8152 Glattbrugg,
Zurich, Switzerland
TEL: +41 076 587 61 53 / TEL: +41 076 593 88 67
EMAIL: theferrariagency@gmail.com
www.theferrariagency.com



AUSTRALIA & NEW ZEALAND | LE BUREAU
FASHION MARKETING
CONTACT: Kim Amber Rossouw
ADDRESS: Suite 7, 112 McEvoy Street, Alexandria,
NSW 2015, Sydney
TEL: +61 (02) 96984450 / MOB: +61 (0) 407227659
EMAIL: kim@lebureaufashion.com
www.lebureaufashion.com

