

ERIBÉ®

KNITWEAR DESIGN • SCOTLAND



COLLECTION 2023 / 2024





## A letter from Rosemary

Thank you, dear retailers and fans! Thank you for your beautiful displays of ERIBÉ Knitwear. Thank you for spreading the joy of colour during these troubled times.

There is something very reassuring and comforting about knitwear. It is tactile, visual, warm and natural. It is practical, sustainable and sustaining. I hope that this year's collection will provide you all with new, calm energy and bring you joy.

This year, Her Royal Highness, Princess Anne, in her capacity as patron of the UK fashion industry, opened our Headquarters in Melrose. This was a momentous occasion and Her Royal Highness spent a considerable time speaking with staff and discussing aspects of textile manufacture with us.

Since her visit our Edwardian Home has become even more a hive of activity with visitors and events, including knitting interest groups, basket weaving, music making, games nights and meetings of local groups.

We value this open door approach and we welcome you to visit us to enjoy the library, our newly opened kitchen and to view the newest art exhibitions adorning our walls.

Whether you visit physically or virtually be assured of a very warm welcome!

Best wishes for a great season ahead.

Rosemary Eibé



*Above: In March of this year, we were delighted to welcome Her Royal Highness Princess Anne when she visited both ERIBÉ HQ and our factory, Woolly Towers.*





# Introducing our growing Eribé community

It is humbling to think that, from sheep grazing contentedly on the hillside, a whole, connected world of human activity is manifested. Creatively working, learning and interacting together feeds us while delivering natural comfort, joy and satisfaction.

With this in mind let me introduce the ERIBÉ Teams and some of our skilled knitwear makers, designers, retailers, and of course, the wearers and new fans...



ERIBÉ Team, Melrose and Woolly Towers



ERIBÉ Team, Poland



ERIBÉ Team, Woolly Towers



Gulzeer and Team, Bulgaria



## Our retailers

"Everyone in Beccles is wearing ERIBÉ, you see the women in their Long Corry Cardigan, and they all know the shop they get it from! I love wearing my raglan, as it keeps me warm but also allows me to layer up. It's lovely to have a community that appreciates the same fashion" *Allison - Wholesale customer*

"It's like waking up on Christmas morning when you are 10 again and all your dreams have come true!!!! This is how we feel about our Eribé orders! Every single piece is a work of art that you know has been lovingly created not only for today but tomorrow as well." *2021, Albert and Daphne, Boutique in Australia*

"Wearing Eribé makes me feel good about myself - it's a friendly and forgiving face in my wardrobe which is easy to feel hugged in!" *Blacketts, Bamburgh*

"I am determined to fill my shop with color, we all need the cheerfulness." *Doris, Mackimmie Co, USA*

"ERIBÉ amazes me every time about the wonderful mix between contemporary and tradition in their styles. ..." *De Wandelwinkel, Netherlands*

## Our wearers



"The colours are splendiferous; I have never seen anything like them before. everyone compliments my Alpine cardigan and asks where I got it. It keeps me feeling put together on days when I want to get out of the house quickly and feel great." *Linda - E-shop customer*

"I have found the wonderful comfort and joy of colourful knitwear for this new stage of my life. And I couldn't be happier. Thank you ERIBÉ" *Karen 2021, (Cancer survivor)*

E-shop customer on Corry Raglan: "The jumper is so soft and warm, it's like wearing a hug." *Misty July, 2021*

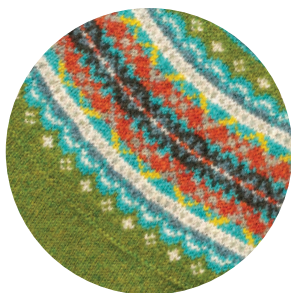




## Why choose Eribé

The key trends for 2023 continues our focus on the importance of natural fibres, sustainability, slow fashion, colour and the authenticity of a brand's purpose and story.

ERIBÉ is a genuine artisan brand. We strive to create handcrafted knitwear that lasts; a contemporary take on the vintage nostalgia evoked by timeless classic Scottish design that brings joy to every wearer. We knit that favourite jumper.



### *Timeless Appeal*

Our colourful knitwear and accessories are in demand. We help women and men fulfil their desire for unique self expression through creative designs that truly stand out.

### *Sustainability*

Slow fashion and sustainability are at the heart of what we do. Our products are designed to last and never go out of style. All our garments are hand crafted using only the finest quality sustainable 100% Lambswool.



### *Unrivalled Choice*

Our collections offer a variety of weights and different colourways to suit global preferences and skin-tones. Every ERIBÉ style is available in multiple colourways and we pride ourselves in the variety of colours we offer.

### *Premium Products*

ERIBÉ stockists are profitable. There is no need to discount timeless, quality knitwear. Our brand contributes to a unique customer experience.



For sales enquiries please contact:

**sales@eribe.com T: +44 (0)1896 755540**







# Join the Slow Fashion Revolution!

From the very beginning, ERIBÉ has been mindful of the environment, choosing to use the best ecological natural yarns and promoting sustainable fashion with every collection.

Our colourful knitwear never goes out of fashion and in a world of throw-away clothing, this is slow fashion at its very best. Quality is at the heart of what we do and our knitwear is made to last.

It is now more important than ever to consider the environment in the choices we make.

## The Problem

Synthetic fibres like polyester, nylon and acrylic are made from plastic. During washing, a garment can potentially lose up to one million microfibres. These microfibres do not biodegrade and we do not yet fully understand the damage that plastic microfibres are doing to us, marine life and the environment.

## The Solution - Choose Wool!

By switching to quality natural fibres, you can help us on our mission to help keep plastic microfibres out of our oceans and food supply. Wool is 100% biodegradable in both soil and sea water and has many unique properties that benefit both the environment and you, the wearer.



### 100% Natural

Wool is a natural fibre produced by sheep who consume the organic carbon stored in plants and convert it to wool. It is one of the most effective forms of all-weather protection and science is yet to produce a fibre which matches its unique properties.



### Renewable & Sustainable

Wool is an entirely renewable fibre source as sheep produce a new fleece every year. Responsible wool producers actively work to safeguard the environment to make the wool industry sustainable for future generations.



### Durable

The lifespan of wool garments is much longer than those made with synthetic fibres. Buying long-lasting, quality clothing will help slow down the fast-fashion throwaway culture and greatly reduce landfill waste.



### Environmental

The natural stain and odour resistant qualities of wool mean that wool knitwear can be washed less frequently and at lower temperatures which has a lower impact on the environment.



### Recyclable

The high quality and durability of the wool fibre makes it inherently suitable for re-use and recycling. The mechanical recycling of wool knitwear yields yarns that can then be converted back into knitwear and other useful products.



### Biodegradable & Compostable

At the end of its useful life, wool quickly decomposes in soil, releasing valuable nutrients into the ground. Man-made fabrics break down much more slowly and release polluting micro-particles into the earth and the ocean.



# The Wonder of Wool!

Not only is wool one of the most planet-friendly fibres, by wearing wool you can enjoy its many performance benefits: great thermal properties; breathable for maximum natural comfort; and keep warm without overheating. Wool maintains a good appearance for a longer time allowing it to become your favourite garment.

Wool also continues to get softer and moulds to fit your body shape and can be smoothed back to shape after washing. Wool gives you the ultimate in comfort, a favourite garment that lasts many years with the knowledge that you are part of a sustainable future.

## Ethical production from Ewe to You



Like a wonderful extended family, ERIBÉ is all about the people involved; from our wool producers, spinners, mills and suppliers, to our agents, buyers and customers. Great attention is paid to every person involved in our supply chain to ensure the highest standards of ethical production.

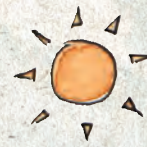
We use only the finest quality Merino Lambswool, ethically sourced from top producers and spun in Yorkshire by a family owned company who ensure our yarn is treated with passion and care at every stage of the production process.

## Little things mean a lot

Here at ERIBÉ HQ we are actively taking steps to reduce our use of plastic and other unsustainable materials. Collectively, if we all do our bit, we believe small changes can make a big difference.



We have replaced our plastic garment bags with bags made with a compostable film created from wood pulp, a natural renewable resource which is both biodegradable and compostable.



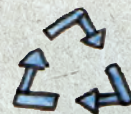
We have reduced our carbon footprint by using green energy to power our factory.



We have reduced the need for overseas travel by having more meetings online.



We have reduced production of printed materials by providing PDF catalogues and invested in a Trade Portal customer order system accessed via the internet.



We re-use cardboard boxes as much as we can and use recyclable parcel tape made from paper.



# ERIBÉ®

KNITWEAR DESIGN • SCOTLAND

COLLECTION

2023 / 2024

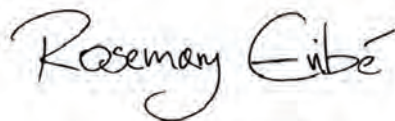
## *Once upon a time in Scotland...*

Here at ERIBÉ we practice 'Evolution' not 'Revolution'.

Our knitwear is gently evolving in harmony with this present time. The focus is to improve our colours, blending unusual tones for contrast and delight or for a painterly approach. New body shapes have been carefully developed and styled to suit a wide audience with varied lifestyle requirements.

As always, traditional craft is at the heart of our Scottish inspired knitwear. We strive to ensure your ERIBÉ garments become your favourites, providing comfort and warmth, and colour to radiate your personal energy.

Be ready and open for change - step out with calm confidence!

A handwritten signature in black ink that reads "Rosemary Eibé". The script is fluid and cursive, with the first name "Rosemary" written in a slightly larger, more prominent hand than the surname "Eibé".





*Alpine*

P10-21



*Conry*

WOMENS P22-33  
MENS P58-63



*Montrose*

P40-43



*Kinnross*

P50-53



*Soft Shetland*

WOMENS P46-49  
MENS P72-79



*Stoneybreck*

WOMENS P44-45  
MENS P70-71



*Ecology*

WOMENS P34-39  
MENS P64-69



*Accessories*

P82-103







ERIBÉ®  
KNITWEAR DESIGN • SCOTLAND

WOMENSWEAR COLLECTION

2023 / 2024









## Alpine

The ERIBÉ classic! Looking stunning has never been easier.

For 2023 our popular Alpine Collection offers the iconic cardigan and sweater in regular and short lengths as well as sporty hooded styles and also an elegant roll collar. The slouchy boyfriend Alpine Breeze sweater is perfect for winter walks or relaxing at home.

Alpine garments are knitted by a small family run factory in the EU with merino wool spun in Yorkshire.

Challenging to produce, the intricate patterns and 20 gorgeous colourways take months to design.









# New Alpine Colourways for 2023



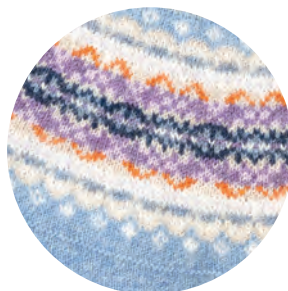
*Willow*

Feel the soft wind and rays of sunshine on the leaves as you walk through the willows growing by the water making you feel calm and relaxed.



*Hibiscus*

Tasteful and softly oozing with geranium pinks toned down by soft brown sugar and touches of duck egg blue for an elegant, blended colourway.



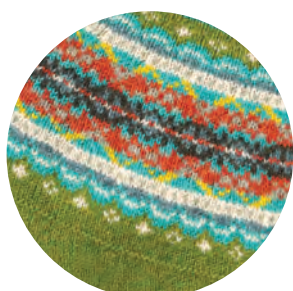
*Iris*

The Iris flower symbolise wisdom, courage and hope. This calm pale blue is enriched with lilacs, turmeric and creams for a colourway that will never feel tired.



*Lindean*

A sparkling blend of exotic floral colours on a base of pale grey contrasted with deep navy to make you look and feel young and happy.



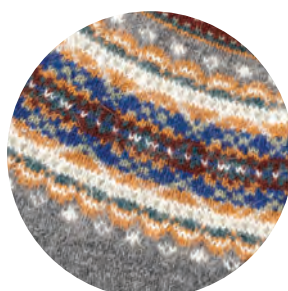
*Moss*

Feel the softness of green moss and enjoy the rich added colours of ember, emerald and dark Khaki with bursts of piccalilli yellow.



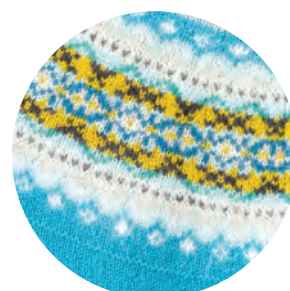
*Fiesta*

Bursting with joy, get ready to party with this bold pink, clashing with reds, yellow, lilac, green, grey and sparkles of white.



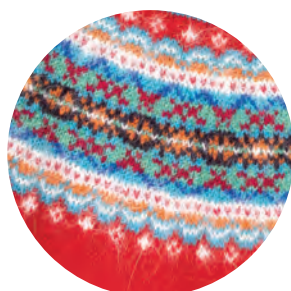
*Hawthorn*

Derby grey, chestnut brown with ochre, blue, green and white from the Hawthorn Blossom Tree makes a reassuringly easy to wear classic colourway.



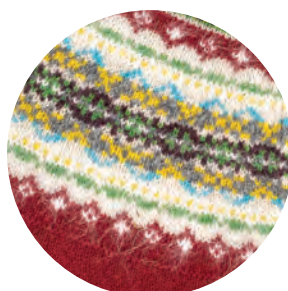
*Turquoise*

Sit by the edge of a lagoon to appreciate the fresh, clear colours of sparkling turquoise, whites and the sun's yellow reflection dancing on the ripples.



*Crabapple*

Energise yourself with this glowing colourway of brilliant red softened with orange, blues, deep elderberry and refreshed with white.



*Hemlock*

This auburn, deep red-brown comes to life with greens, piccalilli and touches of turquoise caressed with cappuccino cream.



Alpine Cardigan and Sweater are available in the following colours:



ARCTIC



LINDEAN ●



HIBISCUS



PICCALILLI ●



IRIS



HAWTHORN ●



FIESTA ●



MOSS ●



TURQUOISE ●



EMERALD



NOUGAT



WILLOW ●



ENCHANTED



LUGANO



CRABAPPLE ●



PARADISE



OBAN



OLD ROSE ●



HEMLOCK



BRACKEN ●

● Delivery from June 2023 onwards



HEMLOCK



## Alpine Cardigan

Style No: C3735

96% Merino Lambswool 4% Angora

Sizes: XS / S / M / L / XL / XXL

Slim Fit

Fairisle pattern yoke cardigan with shell buttons, pattern on hem and cuff, finished with a touch of luxury angora in the yoke for glamour and soft texture. Extra long cuffs to keep your hands warm. Slightly shaped waist. Available in 20 colours with matching scarves, gloves and beanies.

## Alpine Sweater

Style No: P3974

96% Merino Lambswool 4% Angora

Sizes: XS / S / M / L / XL / XXL

Regular Fit

Fairisle pattern yoke sweater with pattern on hem and cuff, finished with a touch of luxury angora in the yoke for glamour and soft texture. Extra long cuffs to keep your hands warm and with a slightly shaped waist. Available in 20 colours with matching scarves, gloves and beanies.



IRIS





TURQUOISE

## Alpine Short Cardigan

Style No: C4249

100% Merino Lambswool

Sizes: XS / S / M / L / XL / XXL

Slim Fit

This short cardigan sits below your hip bone and has regular sleeves and armhole sizing. Fairisle pattern detail on shoulder only, hip length with extra long cuff and shell buttons. Designed to sit with high waisted trousers, skirts and dresses. Available in 12 colours with matching accessories.



MOSS

## Alpine Short Sweater

Style No: P4250

100% Merino Lambswool

Sizes: XS / S / M / L / XL / XXL

Slim Fit

Hip length, short Alpine sweater in 100% merino wool from Yorkshire. Choose the size to suit your style: size up for a looser shape, or size down for slimline. The sleeves and armhole have a regular fit. Fairisle pattern detail on shoulder only and extra long cuffs. Designed to sit with high waisted trousers, skirts and dresses. Available in 12 colours with matching accessories.



CRABAPPLE





PICCALILLI

Alpine Short Cardigan and Short Sweater are available in the following colours:



ARCTIC



PICCALILLI ●



TURQUOISE ●



HIBISCUS ●



OLD ROSE



MOSS ●



EMERALD ●



NOUGAT



BRACKEN



PARADISE



ENCHANTED



CRABAPPLE ●

● Delivery from June 2023 onwards





HAWTHORN

## Alpine Breeze Sweater

Style No: P4226

100% Merino Lambswool

Sizes: Short (S-L) Length: 63cm

Tall (M-XXL) Length: 70cm

Relaxed Fit

Our classic Fairisle yoke pullover is simplified and made in a looser shape for a relaxed fit. The ribs are firmer, thicker and more pronounced. The two sizes are designed according to height. Fairisle pattern only on the shoulder and rib cuffs and hem in main colour. Available in 6 colours with matching accessories.



LINDEAN ●



HAWTHORN



HIBISCUS ●



EMERALD



OBAN



ENCHANTED ●

● Delivery from June 2023 onwards



## Alpine Roll Neck

Style No: P4128

96% Merino Lambswool 4% Angora

Sizes: XS / S / M / L / XL / XXL

Regular Fit

A regular fit roll neck sweater with a slightly shaped waist. Fairisle and tweed pattern around shoulders, above cuffs and hem. Extra long cuffs to keep hands warm. Available in 6 colours, with matching accessories.



ARCTIC



WILLOW ●



HAWTHORN



OBAN



BRACKEN ●



HEMLOCK ●

● Delivery from June 2023 onwards



HEMLOCK



WILLOW





## Alpine Hoody Sweater

Style No: P4255

100% Merino Lambswool

Sizes: XS / S / M / L / XL / XXL

Regular Fit

A refreshingly sporty take on our Fairisle classic with extra long cuffs, a hood and knitted ties. Fairisle and tweed pattern around shoulders only. No pockets. Available in 8 colours with matching accessories.



## Alpine Hoody Zipper Cardigan

Style No: C4303

100% Merino Lambswool

Sizes: XS / S / M / L / XL / XXL

Slim Fit

A refreshingly sporty take on our Fairisle classic with extra long cuffs, a hood, knitted ties and 2 way open end zip. Fairisle and tweed pattern around shoulders only. Available in 8 colours with matching accessories.





PICCALILLI

Alpine Hoody Sweater and Zipper Cardigan are available in the following colours:



ARCTIC



IRIS



WILLOW



LINDEAN



FIESTA



EMERALD

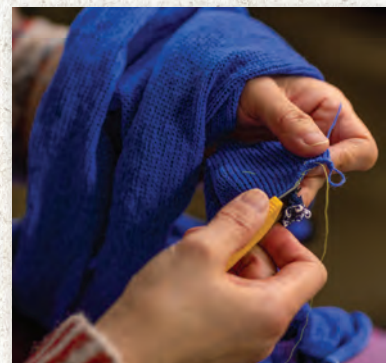
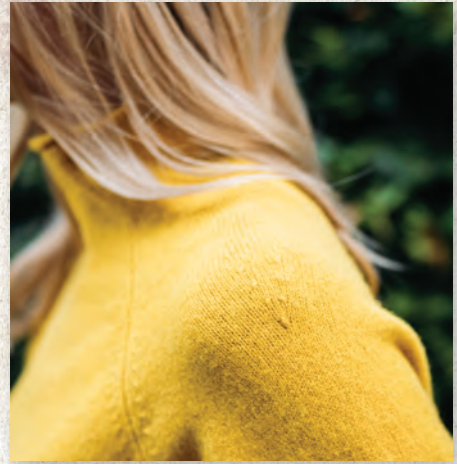


PICCALILLI



ENCHANTED









A SUSTAINABLE  
CHOICE BY  
ERIBÉ®



## Conny

A sustainable luxury fleece collection made with the softest 100% Merino wool spun in Yorkshire and available in 16 beautiful colours across 11 easy to wear styles.

Inspired by the contemporary renaissance in artistry and craft, sustainability is at the heart of this collection.

*"It's like a hug" - Cat Ness*





Women's Corry Raglan Sweater and Corry Top are available in the following colours:



PICCALILLI



GLACIER ●



PINK HAZE ●



LANDSCAPE



INFERNO



CASPIAN ●



SHAMROCK ●



WATERCRESS



RUBY ●



SPEEDWELL



GAZELLE ●



TOBACCO ●



NEBULA



RHAPSODY ●



CLIFF



SEAWEED ●

● Delivery from June 2023 onwards





SPEEDWELL

## Women's Corry Raglan Sweater

Style No: P4130

100% Merino Lambswool

Sizes: XS / S / M / L / XL / XXL

Relaxed Fit

This ERIBÉ classic shape was designed using the artist's smock top as inspiration. The collar and hems can roll inside or out and made shorter or longer as desired. The bottom hem has small open side vents.



GAZELLE



CLIFF

## Corry Top

Style No: P4127

100% Merino Lambswool

Sizes: XS / S / M / L / XL

Regular Fit

An easy to wear soft fleece relaxed fit top with a flattering small cross over vee detail at the front neck. For a slimmer fit, wear a size smaller.



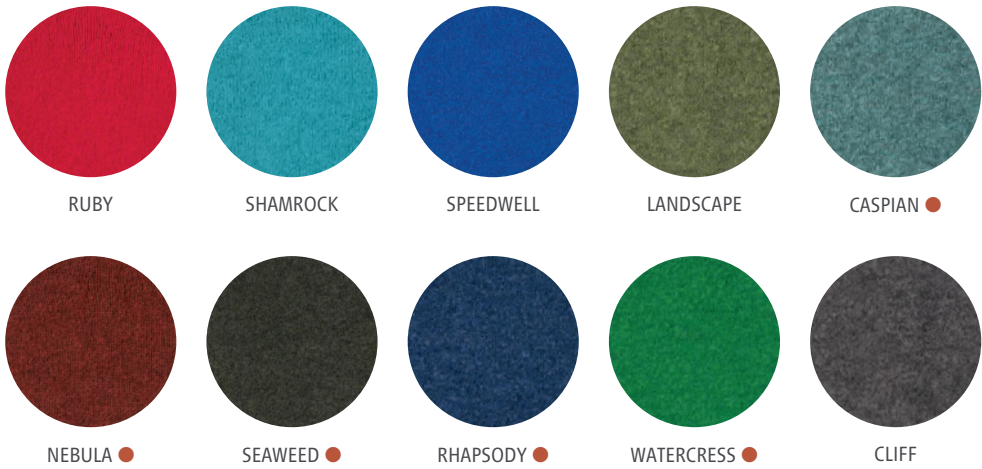
# Corry Long Cardigan

Style No: C4222  
100% Merino Lambswool  
Sizes: Short / Length: 100cm  
Tall / Length: 109cm  
Loose Fit

A lightweight over the knee length coat with practical extra large pockets. The v-neck and front edge rib is integral to the garment and all trims are simple for maximum ease of wear giving a modern look. Wear together with the dresses or top for an updated Twinset. Can be worn outside and inside your home. Length may vary between colours.



Corry Dress and Corry Long Cardigan are available in the following colours:



● Delivery from June 2023 onwards





## Corry Dress

Style No: D4126

100% Merino Lambswool

Sizes: XS / S / M / L / XL

Slim Fit

A versatile dress in luxurious, sustainable wool with the softest handle. Slightly shaped at the waist with a soft folded integral collar and vents at either side of hem. Wear one size larger for a looser fit. Wear together with the Corry Long Cardigan or Colourblock Stole. Length may vary between colours.

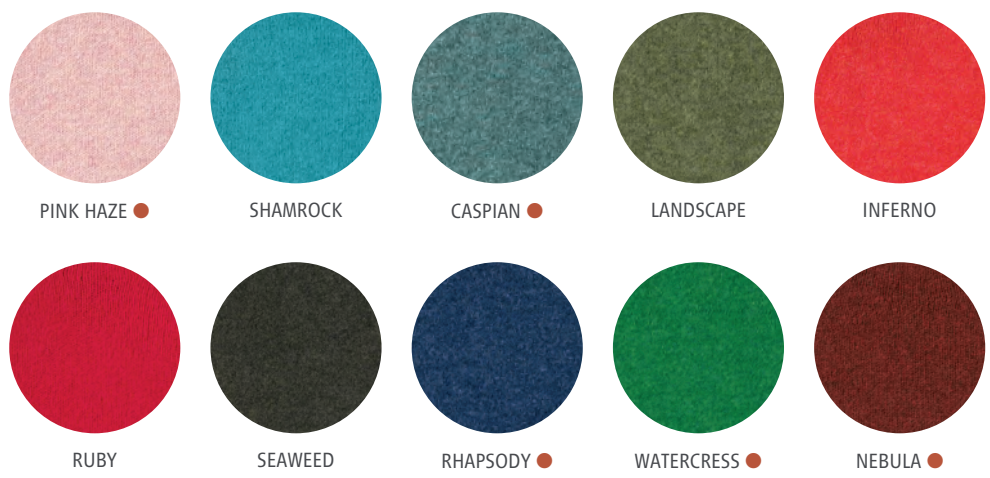






V-NECK TANK TOP / RHAPSODY

Corry V-Neck Sweater, Corry V-Neck Tank Top and Corry Round Neck Cardigan  
are available in the following colours:



● Delivery from June 2023 onwards



## Corry V-Neck Sweater with pockets

Style No: P4234

100% Merino Lambswool

Sizes: XS / S / M / L / XL / XXL

Relaxed Fit

Minimalist in design, just pure function with 2 pockets. Wear over a dress, a blouse or T-shirt for extra warmth or an attractive addition to your wardrobe.



## Corry V-Neck Tank Top with pockets

Style No: V4232

100% Merino Lambswool

Sizes: XS/S / S/M / M/L / L/XL / XL/XXL

Relaxed Fit

Minimalist in design, just pure function with 2 pockets. Wear over a dress, a blouse or T-shirt for extra warmth or an attractive addition to your wardrobe. The dual size allows you to choose slim fit or regular fit.

## Corry Round Neck Cardigan

Style No: C4295

100% Merino Lambswool

Sizes: XS / S / M / L / XL

Regular Fit

An updated version of our previous cardigan with a smaller neck and larger buttons. Minimalist in design, just pure function. Wear over a dress, a blouse or T-shirt for extra warmth or as an attractive add on to your wardrobe.







## Corry Hoody Sweater

Style No: P4273

100% Merino Lambswool

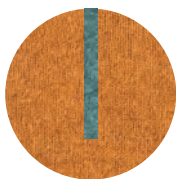
Sizes: XS / S / M / L / XL / XXL

Relaxed Fit

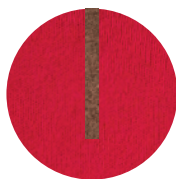
This hoody is a sporty new addition with chunky knitted ties in a contrasting colour. Unique and subtle shaping details around the chest and shoulders and no ribs make it easy to wear. Select larger sizes for a loose fit. A sustainable choice.



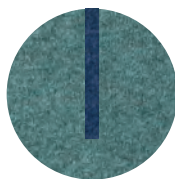
Corry Hoody Sweater is available in the following colours:



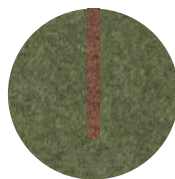
GAZELLE (base) /  
CASPIAN (contrast)



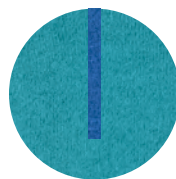
RUBY (base) /  
TOBACCO (contrast)



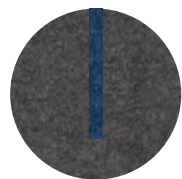
CASPIAN (base) /  
RHAPSODY (contrast)



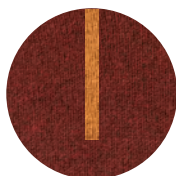
LANDSCAPE (base) /  
TOBACCO (contrast)



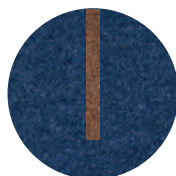
SHAMROCK (base) /  
TAHITI (contrast)



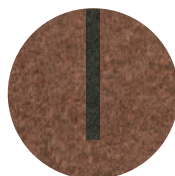
CLIFF (base) /  
RHAPSODY (contrast)



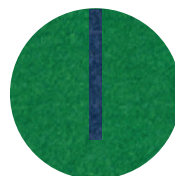
NEBULA (base) /  
GAZELLE (contrast)



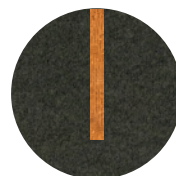
RHAPSODY (base) /  
TOBACCO (contrast)



TOBACCO (base) /  
SEAWEED (contrast)



WATERCRESS (base) /  
RHAPSODY (contrast)



SEAWEED (base) /  
(contrast) GAZELLE





## Corry Sweater Dress

Style No: P4272

100% Merino Lambswool

Sizes: XS / S / M / L / XL / XXL

Relaxed Fit

The ERIBÉ favourite Corry Raglan is now a dress to give you even more warmth and comfort. This sweater dress has a loose collar that can be worn up or turned down inside or out. No trims means the sleeves are easily rolled up and can be worn belted, giving you plenty of flexibility. Also ideal after wild swimming!

## Corry Deep V-Neck Sweater

Style No: P4274

100% Merino Lambswool

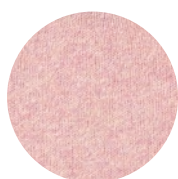
Sizes: XS / S / M / L / XL / XXL

Oversized Fit

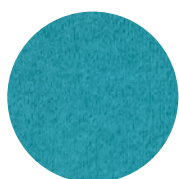
This new deep v-neck has firm ribs at the hems to keep its shape despite being oversized. A comfortable and relaxed garment.



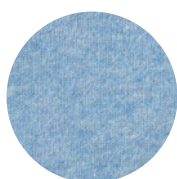
Corry Sweater Dress and Corry Deep V-Neck Sweater are available in the following colours:



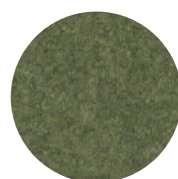
PINK HAZE



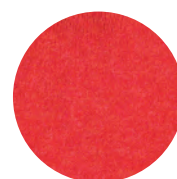
SHAMROCK



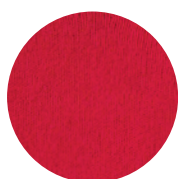
GLACIER



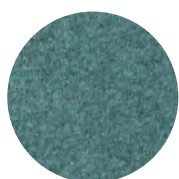
LANDSCAPE



INFERNO



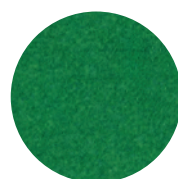
RUBY



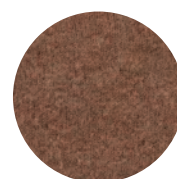
CASPIAN



RHAPSODY



WATERCRESS



TOBACCO





# Corry T-Shirt Sweater

Style No: P4271

100% Merino Lambswool

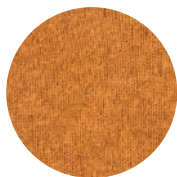
Sizes: XS / S / M / L / XL / XXL

Relaxed Fit

At last a fine woollen long sleeve t-shirt that is soft and comfortable. A small rib collar and no trims on cuffs and hips for an easy wear. Ladies buy a size smaller than your usual size.



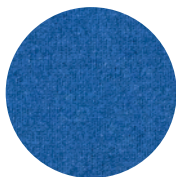
Corry T-Shirt Sweater is available in the following colours:



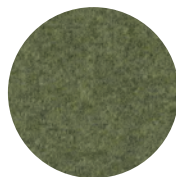
GAZELLE



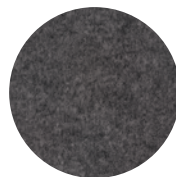
TOBACCO



TAHITI ●



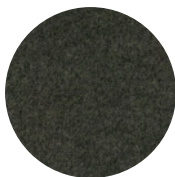
LANDSCAPE ●



CLIFF



NEBULA



SEAWEED



RHAPSODY ●



WATERCRESS ●

● Delivery from June 2023 onwards













## Ecology

Our Ecology collection is hardwearing and practical. Knitted with a new wool that comes from British sheep, spun and dyed in Yorkshire by a family business and knitted in Great Britain.

For both men and women, Ecology garments feature large pockets and are ideal when you are making things or working outdoors. They are surprisingly soft and comfortable; a contemporary wear that displays heritage and eco-conscious living.

These designs are perfect to wear with our Shetland fairisle and Corry garments - these are real clothes for real people!







## Herd Women's Waistcoat

Style No: V4243

100% British Wool

Sizes: XS / S / M / L / XL / XXL

Regular Fit

Made in Great Britain

Long length waistcoat / gilet with 3 pockets. Attractive details are knitted into the v-neck, armhole, back and shoulders. This heavy weight garment is incredibly warm and made to last. Features include large horn buttons and doubled hems for added quality and durability.



## Herd Raglan Sweater

Style No: P4237

100% British Wool

Sizes: XS / S / M / L / XL / XXL

Relaxed Fit

Made in Great Britain

Designed for both men and women, this contemporary and simple artisan design has 2 large pockets and an easy turtle neck that can be rolled outside or inside or left up. Large double knitted hems at the cuff and bottom add extra durability. On each shoulder we have knitted a diamond shape in the style of Guernsey handknits.







BULRUSH

All Herd styles are available in the following colours:



SHALE



FALLOW



PENNINE



BULRUSH



MARITIME



PEAT

## Herd Women's Jacket

Style No: J4229

100% British Wool

Sizes: XS / S / M / L / XL / XXL

Regular Fit

Made in Great Britain

Women's short jacket with a collar and 2 large pockets. Attractive details are knitted into the shoulders and back. This medium weight garment is warm and made to last. Features include large horn buttons and doubled hems for added quality and durability.

Available for June delivery





## Ecology Crew Neck Vest

Style No: V4267

100% British Wool

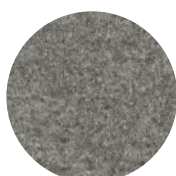
Sizes: XS / S / M / L / XL / XXL

Relaxed Fit

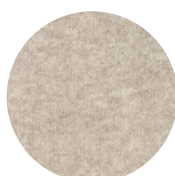
Made in Great Britain

A versatile vest in wool from British sheep. The handle is coarse, but the comfort, warmth and longevity is so worth it. A real artisan garment to wear over dresses or shirts. For men and women - women wear one size smaller.

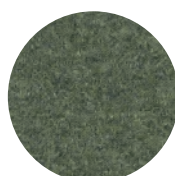
Ecology Crew Neck Vest and Stand Neck Sweater are available in the following colours:



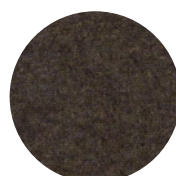
SHALE



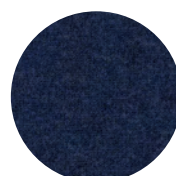
FALLOW



PENNINE



BULRUSH



MARITIME



PEAT

Available for June delivery





## Ecology Draw String Two Tone Sweater

Style No: P4266

100% British Wool

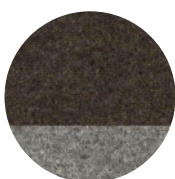
Sizes: XS / S / M / L / XL / XXL

Relaxed Fit

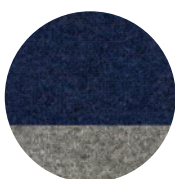
Made in Great Britain

A two tone artisan top that is timeless. Knitted in wool from British Sheep, spun in Yorkshire. Features such as purl knit on the sleeves and wide high neck with draw strings, give it a handmade feel. For Men and Women. Women wear 1 size smaller

Colours available:



BULLRUSH / SHALE



MARITIME / SHALE

Available for June delivery









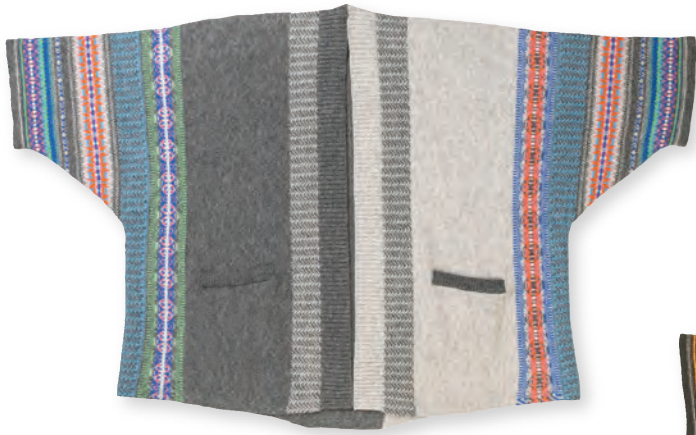


## Montroze

Striking, bold and easy to wear with unique design details such as guernsey ribs, tweed and Fairisle charm. Made with 100% Merino lambswool, this knitting technique gives a flattering drape for comfort and individuality. Can be worn upside down with a collar and two side pockets for a touch of glamour. Made in EU by a small family run factory.







FLORAL SPICE ●



BRACKEN ●



OLD ROSE



LUGANO



OBAN BAY ●



SELKIE

● Delivery from June 2023 onwards





FLORAL SPICE

## Montrose Blanket Coat

Style No: C4141

100% Merino Lambswool

One Size

Oversized Fit

A versatile mid-thigh length coat / jacket or “throw on” with practical deep pockets. Turn upside down for extra warmth around the shoulder or to wear elegantly with a dress. This garment can be worn like a blanket, and is ideal for those temperature changing moments; a wonderful live-in garment for all occasions.

Colours available:

FLORAL SPICE

BRACKEN

OLD ROSE

LUGANO

OBAN BAY

SELKIE



OBAN BAY



BRACKEN





1 ●

2

3 ●

4

5 ●

6

7 ●

8





## Stoneybrek Sweater

WOMEN'S Style No: P3987

100% Merino Lambswool

Sizes: XS / S / M / L / XL / XXL / XXXL

Relaxed Fit

Round neck sweater with a distinctive graphic yoke around the neck offering a handknitted look at an affordable price. Surprisingly lightweight yet warm and comfortable.

Ladies, if you wish to have a man's colour, please select from mens and choose one size smaller.

Colours available:

1. SOLSTICE ●
2. BEAVER
3. MAPLE LEAF ●
4. OLD ROSE
5. HONEYSUCKLE ●
6. LAGOON
7. JOY ●
8. ARCTIC

SOLSTICE



ARCTIC

## Stoneybrek

Designed for women and men, our Stoneybrek sweater combines the comfort and warmth of beautifully soft Merino lambswool with signature ERIBÉ styling to create a year-round staple you'll turn to time and time again. With a flattering circular Fairisle yoke and chunky hand-knit look, the Stoneybrek is great for all seasons thanks to its lightweight garter stitch construction. Ideal for any outdoor activity or relaxing at home. Knitted in EU by our family run factory partner.

● Delivery from June 2023 onwards









## Soft Shetland

With more than a nod to nostalgia, our Soft Shetland Collection makes a statement while keeping you warm and comfortable. Inspired by traditional patterns from the Fair Isle to the far North West of Scotland and knitted in 100% Supersoft Wool, ERIBÉ offers this range of plain and patterned knitwear in a wide range of colourways.





Westray Vest, Sweater and Cardigan are available in the following colourways:



BUDGIE



COTSWOLD



ORANGE BURST



TOKYO



HARESFOOT



FIREFLY



POPPY



MEADOW



CHESTNUT



RUBY GLOW



BOTANY



APHRODITE



MIDNIGHT



SPANGLE





TOKYO

## Westray Vest

Style No: V4247

100% Supersoft Wool

Sizes: XS / S / M / L / XL / XXL / XXXL

Slim Fit

Fairisle vest with scoop round neck, straight shape and traditional striped pattern detail on hem and armhole, knitted in supersoft wool.



MEADOW



SPANGLE

## Westray Sweater

Style No: P4202

100% Supersoft Wool

Sizes: XS / S / M / L / XL

Regular Fit

Over-hip length Fairisle sweater with traditional striped pattern detail on hem and cuff, knitted in supersoft wool.

## Westray Cardigan

Style No: C4199

100% Supersoft Wool

Sizes: XS / S / M / L / XL

Regular Fit

Over-hip length Fairisle cardigan with horn buttons, traditional striped pattern detail on hem and cuff, knitted in supersoft wool.







# Kinross

The Kinross Sweater is a luxury addition to our much sought-after Fairisle collection.

Inspired by the natural beauty of our Scottish landscape and traditional patterns from Shetland and Fair Isle, the Kinross is made with a premium ultra-soft superfine merino lambswool that feels like cashmere - it is so soft and lightweight, it's like a soft caress!

Made with a Scottish spun fully traceable and guaranteed non-mulesed RWS Certified\* yarn, the Kinross combines traditional techniques with signature ERIBÉ colouring to create a contemporary statement piece that really stands out from the crowd.

The RWS trademark recognises the best and most reliable farmers. They make sure that the welfare of the land and the animals are ethically looked after and visit each year to support farmers. This certificate can only be used on virgin wool.

By investing in RWS certified wool you show your customers that you care about fair trade, sustainability, and the wellbeing of sheep and land across the world.



A SUSTAINABLE  
CHOICE BY

ERIBÉ®



## \*RWS Certified Yarn

The RWS (Responsible Wool Standard) is a voluntary standard that addresses the welfare of sheep and the land they graze on. It provides the knitwear industry with a tool to recognise the best practices of farmers; ensuring that wool comes from farms that have a progressive approach to managing their land and respect the highest standards of animal welfare.



The Kinross is so soft that when you first wear it, loose fibres near the surface can rub together form little balls of wool known as pilling or bobbling. For peace of mind, every Kinross garment comes with a complimentary sweater comb.

By removing the small pills after each of the first 3-4 washes, the pilling subsides and will eventually disappear.



## Kinross Sweater

Style No: P4218

100% Supersoft Merino Lambswool

Sizes: XS / S / M / L / XL / XXL

Regular Fit

An ultra soft, colourful Fairisle Sweater made with a premium ultra-soft superfine merino lambswool that feels like cashmere – it is so soft and lightweight, it's like a soft caress!

The distinctive striped trims and graphic motifs are a feature of traditional hand-knitted Shetland Fairisles whilst the "floats" on the inside of the garment trap air to provide a layer of extra warmth.



PEONY

Kinross Sweater, Kinross Cardigan and Kinross High Neck Sweater are available in the following colours:



TULIP ●



CAMPION



PRELUDE



PEONY



BELTNAE



FOXGLOVE ●



REFLECTION ●



SORREL ●

● Delivery from June 2023 onwards





## Kinross High Neck Sweater

Style No: P4297

100% Supersoft Merino Lambswool

Sizes: XS / S / M / L / XL / XXL

Regular Fit

Made in EU

A comfortable pullover as soft as our classic Kinross, but knitted firmer for extra warmth. The high collar stands away from the neck and can be turned down inside or out. For a contemporary look, the romantic Fairisle pattern stops at the shoulder as a flattering detail. Hems have a small rib.



## Kinross Cardigan

Style No: C4199

100% Supersoft Merino Lambswool

Sizes: XS / S / M / L / XL / XXL

Regular Fit

Cardigan version of our ultra soft Fairisle Kinross Sweater finished with horn buttons and traditional striped pattern detail on hem and cuff.















ERIBÉ®  
KNITWEAR DESIGN • SCOTLAND



MENSWEAR COLLECTION  
2023 / 2024









A SUSTAINABLE  
CHOICE BY  
ERIBÉ®



## Conny

A sustainable luxury fleece collection made with the softest 100% Merino wool spun in Yorkshire and available in 10 versatile colours.

Inspired by the contemporary renaissance in artistry and craft, sustainability is at the heart of this collection.

*"It's like a hug" - Cat Ness*







Men's Corry Raglan Sweater is available in the following colours:



PICCALILLI



TAHITI ●



CASPIAN ●



LANDSCAPE



GAZELLE ●



RHAPSODY ●



TOBACCO



WATERCRESS ●



NEBULA ●



CLIFF



SEAWEED





## Men's Corry Raglan Sweater

Style No: P4164

100% Merino Lambswool

Sizes: XS / S / M / L / XL

Relaxed Fit

This ERIBÉ classic shape was designed using the artist's smock top as inspiration. The collar and hems can roll inside or out and made shorter or longer as desired.



## Men's T-Shirt Sweater

Style No: P4271

100% Merino Lambswool

Sizes: XS / S / M / L / XL / XXL

Relaxed Fit

At last a fine woollen long sleeve t-shirt that is soft and comfortable. A small rib collar and no trims on cuffs and hips for an easy wear.

Colours available:

CLIFF  
GAZELLE  
LANDSCAPE  
NEBULA  
RHAPSODY  
SEAWEED  
TOBACCO  
TAHITI  
WATERCRESS









SEAWEED

## Corry Hoody Sweater

Style No: P4273

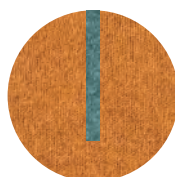
100% Merino Lambswool

Sizes: XS / S / M / L / X L / XXL

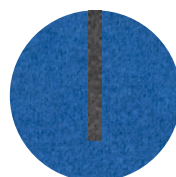
Relaxed Fit

Sustainable, luxurious, comfortable and warm this lightweight hoody has a contrast colour inside the hood trim with matching chunky 100% wool cord. This minimal design is easy to wear with sleeves that are easily turned up for fit. Knitted with a yoke to give a modern and new comfy shape.

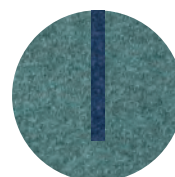
Corry Hoody Sweater is available in the following colours:



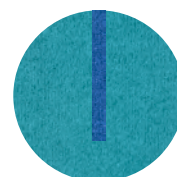
GAZELLE (base) /  
CASPIAN (contrast)



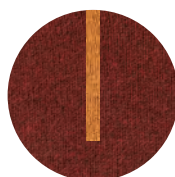
TAHITI (base) /  
CLIFF (contrast)



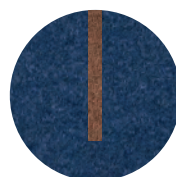
CASPIAN (base) /  
RHAPSODY (contrast)



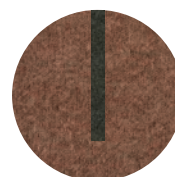
SHAMROCK (base) /  
TAHITI (contrast)



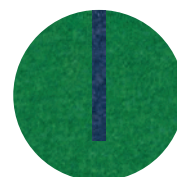
NEBULA (base) /  
GAZELLE (contrast)



RHAPSODY (base) /  
TOBACCO (contrast)



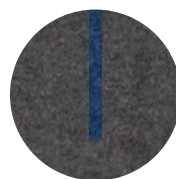
TOBACCO (base) /  
SEAWEED (contrast)



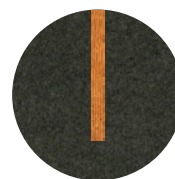
WATERCRESS (base) /  
RHAPSODY (contrast)



LANDSCAPE (base) /  
TOBACCO (contrast)



CLIFF (base) /  
RHAPSODY (contrast)



SEAWEED (base) /  
(contrast) GAZELLE









## Ecology

Our Ecology collection is hardwearing and practical. Knitted with a new wool that comes from British sheep, spun and dyed in Yorkshire by a family business and knitted in Great Britain.

For both men and women, Ecology garments feature large pockets and are ideal when you are making things or working outdoors. They are surprisingly soft and comfortable; a contemporary wear that displays heritage and eco-conscious living.

These designs are perfect to wear with our Shetland fairisle and Corry garments - these are real clothes for real people!







## Herd Mens Jacket

Style No: J4221

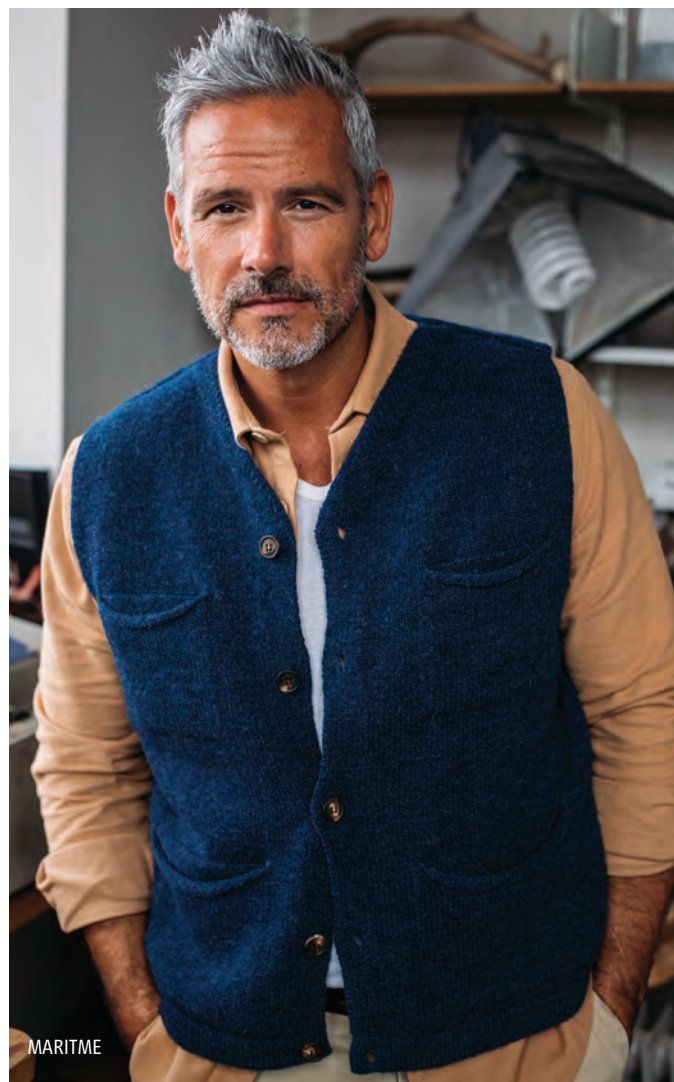
100% British Wool

Sizes: S / M / L / XL / XXL

Relaxed Fit

Made in Great Britain

A classic long length jacket with a collar and 4 pockets. Attractive details are knitted into the shoulders and back. This heavy weight garment is incredibly warm and made to last. Features include large horn buttons and doubled hems



## Herd Mens Waistcoat

Style No: V4240

100% British Wool

Sizes: XS / S / M / L / XL / XXL

Relaxed Fit

Made in Great Britain

A classic length waistcoat with 4 pockets. Attractive details are knitted into the v-neck, armhole, back and shoulders. This heavy weight garment is incredibly warm and made to last. Features include large horn buttons and doubled hems for added quality and durability.





Herd Raglan Sweater, Waistcoat and Jacket are available in the following colours:



SHALE



FALLOW



PENNINE



BULRUSH



MARITIME



PEAT

## Herd Raglan Sweater

Style No: P4237

100% British Wool

Sizes: S / M / L / XL / XXL

Regular Fit

Made in Great Britain

This contemporary and simple artisan design has 2 large pockets and an easy turtle neck that can be rolled outside or inside or left up. Large double knitted hems at the cuff and bottom add extra durability. On each shoulder we have knitted a diamond shape in the style of Guernsey handknits.

Available for June delivery





BULLRUSH / SHALE

## Ecology Draw String Two Tone Sweater

Style No: P4266

100% British Wool

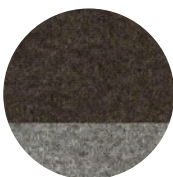
Sizes: XS / S / M / L / XL / XXL

Relaxed Fit

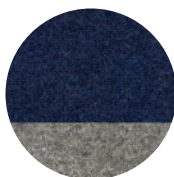
Made in Great Britain

A two tone artisan top that is timeless. Knitted in wool from British Sheep, spun in Yorkshire. Features such as purl knit on the sleeves and wide high neck with draw strings, give it a handmade feel. For Men and Women. Women wear 1 size smaller.

Colours available:



BULLRUSH / SHALE



MARITIME / SHALE

Available for June delivery

## Ecology Crew Neck Vest

Style No: V4267

100% British Wool

Sizes: XS / S / M / L / XL / XXL

Relaxed Fit

Made in Great Britain

A versatile vest in wool from British sheep. The handle is coarse, but the comfort, warmth and longevity is so worth it. A real artisan garment to wear over shirts. For men and women.



BULLRUSH





# Ecology Stand Neck Sweater

Style No: P4268

100% British Wool

Sizes: XS / S / M / L / XL / XXL

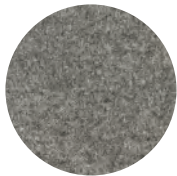
Relaxed Fit

Made in Great Britain

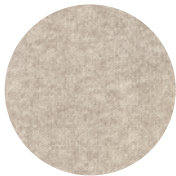
A practical stand neck sweater with 4 button closure, knitted in wool from British sheep. The handle is coarse, but the comfort, warmth and longevity is so worth it. A real artisan garment.



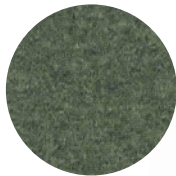
Ecology Stand Neck Sweater and Crew Neck Vest are available in the following colours:



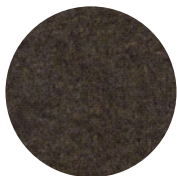
SHALE



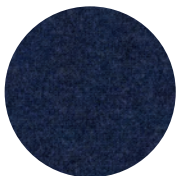
FALLOW



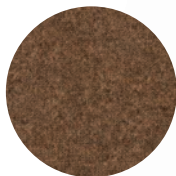
PENNINE



BULLRUSH



MARITIME



PEAT

Available for June delivery









## Stoneybrek Sweater

MEN'S Style No: P4148

100% Merino Lambswool

Sizes: XS / S / M / L / XL / XXL

Relaxed Fit

Round neck sweater with a distinctive graphic yoke around the neck offering a handknitted look at an affordable price. Surprisingly lightweight yet warm and comfortable.

If men wish to have a colour from ladies, please select one size larger.

Colours available:

- 1. ACORN ●
- 2. SELKIE
- 3. MAPLE LEAF
- 4. JADE
- 5. LAGOON
- 6. SPIKE ●
- 7. LUGANO ●
- 8. BEAVER ●



SELKIE



SPIKE

## Stoneybrek

Designed for women and men, our Stoneybrek sweater combines the comfort and warmth of beautifully soft Merino lambswool with signature ERIBÉ styling to create a year-round staple you'll turn to time and time again. With a flattering circular Fairisle yoke and chunky hand-knit look, the Stoneybrek is great for all seasons thanks to its lightweight garter stitch construction. Ideal for any outdoor activity or relaxing at home. Knitted in EU by our family run factory partner.

● Delivery from June 2023 onwards









HAND CRAFTED  
IN SCOTLAND BY  
ERIBÉ®



## Soft Shetland

With more than a nod to nostalgia, our Soft Shetland Collection makes a statement while keeping you warm and comfortable. Inspired by traditional patterns from the Fair Isle to the far North West of Scotland and knitted in 100% Supersoft Wool, ERIBÉ offers this range of solid and patterned knitwear in a wide range of colourways, lovingly crafted in Scotland by ERIBÉ.







## Brodie Sweater

Style No: P4196

100% Supersoft Wool

Sizes: XS / S / M / L / XL / XXL

Relaxed Fit

Made in Scotland

Mid weight sweater with slight upturned round neck, striped hem and cuff detail and all over Fairisle pattern. Knitted in supersoft wool.



## Brodie Vest

Style No: V4200

100% Supersoft Wool

Sizes: XS / S / M / L / XL / XXL

Slim Fit

Made in Scotland

Mid weight v-neck vest with striped hem and cuff detail and all over Fairisle pattern. Knitted in supersoft wool.





Brodie Sweater and Vest are available in the following colourways:



FIRECRACKER



OAK



NORDIC



REDGROUSE



JUNGLE



SKYE



DRIFTWOOD



NEWT



KINGFISHER



DUNNOCK



WOODLAND



BRACKEN



Bruar Sweater and Vest are available in the following colourways:



BUTTERCUP



PLOVER



FERN



GLACIER



SUNSET



CROSSBILL



EVERGREEN



BLACKGROUSE



BRAMBLING



GREAT BURNET



EAGLE



BLUEBERRY



RAVEN



TEASEL





BRAMBLING

## Bruar Sweater

Style No: P4198

100% Supersoft Wool

Sizes: XS / S / M / L / XL / XXL

Regular Fit

Made in Scotland

Mid weight sweater with slight upturned round neck and striped hem and cuff detail.

Knitted in supersoft wool.



RAVEN

## Bruar V-Neck Vest

Style No: V4201

100% Supersoft Wool

Sizes: XS / S / M / L / XL / XXL

Slim Fit

Made in Scotland

Mid weight vee neck vest with striped hem and armhole detail. Knitted in supersoft wool.



BUTTERCUP





## Eddie V-Neck Vest

Style No: V4217

100% Supersoft Wool

Sizes: XS / S / M / L / XL / XXL / XXXL

Regular Fit

Made in Scotland

Mid weight v-neck vest with striped hem and cuff detail and all over Fairisle pattern. Inspired by the 1921 Prince of Wales' (Edward VIII) favourite Fairisle v-neck pullover. The hems are knitted exactly like the original handknitted 2 colour ribs.



BRAMBLING

GLENJOYNE

STROME

CLOUD





CLOUD

## Eddie V-Neck Sweater

Style No: P4216

100% Supersoft Wool

Sizes: XS / S / M / L / XL / XXL / XXXL

Regular Fit

Made in Scotland

Mid weight v-neck sweater with striped hem and cuff detail and all over Fairisle pattern. Inspired by the 1921 Prince of Wales' (Edward VIII) favourite Fairisle v-neck pullover. The hems are knitted exactly like the original handknitted 2 colour ribs.



GLENGOYNE



CLOUD



BRAMBLING



STROME

















## Accessories

Our colourful scarves, wraps, hats and gloves offer an unrivalled variety of texture, colour and pattern to bring joy to your customers. ERIBÉ's accessory collection, made in Scotland and knitted with yarn spun in Yorkshire, complements the collection, adding pattern to plain garments or stripes with fairisle to complete a contemporary outfit. We offer a wide selection of colours to match all garments available.







ARCTIC



BLUE HIBISCUS



NOUGAT



OLD ROSE



FIESTA DEAN



GREEN LILLI



OBAN



ENCHANTED



HAWTHORN



LUGANO



EMERALD



TURQUOISE





HAWTHORN

## Alpine Scarf

Style No: S3972

100% Merino Lambswool

One Size (172 x 40cm)

Made in EU

Intricate embroidery-like Fairisle with two tone tweed textured base patterning and scallop edges.



FIESTA DEAN



GREEN LILLI

### Colours available:

ARCTIC  
BLUE HIBISCUS  
NOUGAT  
OLD ROSE  
FIESTA DEAN  
GREEN LILLI  
OBAN  
ENCHANTED  
HAWTHORN  
LUGANO  
EMERALD  
TURQUOISE



Alpine Beanie, Alpine Turn Up Hat and Alpine Gloves are available in the following colourways:



ARCTIC



BLUE HIBISCUS



FIESTA DEAN



OLD ROSE



NOUGAT



GREEN LILLI



LUGANO



EMERALD



HAWTHORN



OBAN



TURQUOISE



ENCHANTED





NOUGAT

## Alpine Turn Up Hat

Style No: H4239

100% Merino Lambswool

Made in Scotland

One Size

Seamless colour blended Fairisle beanie with turn-up rib suitable for women and men. Matches the collection.



TURQUOISE

## Alpine Beanie (New)

Style No: H4281

100% Merino Lambswool

Made in Scotland

One Size

Fully fashioned shaped beanie to match the collection. Suitable for both women and men.

## Alpine Gloves (New)

Style No: G4280

100% Merino Lambswool

Made in Scotland

One Size

A new version of our popular Fairisle glove with long cuffs, small rib and block colour fingers. Matches the collection.



BLUE HIBISCUS





ARCTIC NIGHT

BLUE IRIS

PINK WILLOW

LUGANO ROSE

FIESTA DEAN

GREEN LILLI

MAGIC APPLE

BRACK THORN

O'EMERALD

MOSS LOCK





LUGANO ROSE



BLUE IRIS

## Alloa Scarf

Style No: S4203

100% Merino Lambswool

Made in Scotland

One Size (170 x 25cm)

Colourblock scarf with side fringes and Fairisle / graphic pattern detail.

Colours available:

ARCTIC NIGHT  
BLUE IRIS  
PINK WILLOW  
LUGANO ROSE  
FIESTA DEAN  
GREEN LILLI  
MAGIC APPLE  
BRACK THORN  
O'EMERALD  
MOSS LOCK



Alloa Fingerless Gloves, Gloves, Beanie and Open Mitts are available in the following colours:



BLUE IRIS



FIESTA DEAN



GREEN LILLY



MAGIC APPLE



PINK WILLOW



ARCTIC NIGHT



LUGANO ROSE



O'EMERALD



MOSS LOCK



BRACK THORN





ALLOA FINGERLESS GLOVES / LUGANO ROSE



ALLOA GLOVES / LUGANO ROSE

## Alloa Gloves

Style No: G4207

100% Merino Lambswool

Made in Scotland

One Size

Fairisle gloves with contrast inner cuff colour.

## Alloa Fingerless Gloves

Style No: G4208

100% Merino Lambswool

Made in Scotland

One Size

Graphic pattern fingerless gloves.

## Alloa Beanie

Style No: H4209

100% Merino Lambswool

Made in Scotland

One Size

Colourblock beanie hat with Fairisle stripe detail.

## Alloa Open Mitt

Style No: M4206

100% Merino Lambswool

Made in Scotland

One Size

Fairisle patterned mitts with contrast inner cuff colour.



ALLOA BEANIE AND OPEN MITT / LUGANO ROSE









## Alloa Open Mitt

Style No: M4206  
100% Merino Lambswool  
Made in Scotland  
One Size  
Fairisle patterned mitts  
with contrast inner  
cuff colour.

Also shown on page 90

## Alloa Beret

Style No: H4062  
100% Merino Lambswool  
Made in Scotland  
One Size  
Circular knit Fairisle beret which  
can be worn like a beanie or in  
true French style.

### Colours available:

BLUE IRIS  
ARCTIC NIGHT  
PINK WILLOW  
FIESTA DEAN  
MAGIC APPLE  
GREEN LILLI  
MOSS LOCK  
BRACK THORN  
LUGANO ROSE  
O' EMERALD









## Alloa Turban Hat

Style No: H4057

100% Merino Lambswool

Made in Scotland

One Size

Stylish slip-on chunky Fairisle headband designed to keep head and ears warm.



LUGANO ROSE



O'EMERALD



ARCTIC NIGHT



BLUE IRIS



BRACK THORN



PINK WILLOW



GREEN LILLI



MOSS LOCK



MAGIC APPLE



FIESTA DEAN





GAZELLE

## Corry Tonal Cowl

Style No: S4155

100% Merino Lambswool

Made in Scotland

One size

Striped rib texture cowl with integrated twist. Beautifully soft and lightweight chunky knit that can be worn many ways.



PARADISE



RUBY  
(INFERNO / RUBY)



BLUES  
(SPEEDWELL / TAHITI)



PARADISE  
(SHAMROCK / WATERCRESS)



PICCALILLI  
(PICCALILLI / CLIFF)



PINK HAZE  
(PINK HAZE / GLACIER)



RHAPSODY  
(CLIFF / RHAPSODY)



GAZELLE  
(GAZELLE / NEBULA)



LANDSCAPE  
(SEAWEED / LANDSCAPE)





## Corry Scarf

Style No: S4244

100% Merino Lambswool

Made in Scotland

One size (approx. 33 x 175cm)

An attractive warm scarf with a textured patterned edge that can also be folded over as a shawl collar and worn as a stole.

Colours available:  
(left to right above)

1. NEBULA
2. TOBACCO
3. GAZELLE
4. SEAWEED
5. CASPIAN
6. LANDSCAPE
7. CLIFF
8. RHAPSODY
9. TAHITI
10. GLACIER
11. SPEEDWELL
12. INFERNO
13. PICCALILLI
14. WATERCRESS
15. SHAMROCK
16. RUBY
17. PINK HAZE



GLACIER





## Treeline Wrap

Style No: S4152

80% Lambswool 20% Kid Mohair

Made in Scotland

One Size (185 x 85cm)

Beautifully soft and lightweight wrap giving volume in subtly changing colours and block stripes with a touch of luxury super-kid mohair.

Colours available:

(Above left to right)

DAWN  
PARADISE  
BLUES  
CASPIAN  
RUBY  
ENCHANTED  
HAWTHORN  
LANDSCAPE









RIO



AMALFI

## Pioneer Snood

Style No: H4277

100% Merino Lambswool

Made in Scotland

One Size, W33cm x H28cm

A soft, reversible snood with Fairisle on one side and bold blocks of colour on the other. Will cheer you up in all winter weathers. For women and men.



AMALFI



FENNEL



NYMPH



RIO



SPRIGHT





## Pioneer Scarf

Style No: S4278

100% Merino Lambswool

Made in Scotland

One Size, 150cm x 17cm

A beautiful double sided scarf to last a life time. Fairisle on both sides, soft and tactile with a diagonal design point feature. Can be worn in many ways to suit the occasion. For women and men.

Colours available:

NYMPH

SPRIGHT

AMALFI

RIO

FENNEL







## Bowden Colour Block Snood

Style No: S4270

100% Merino Lambswool

Made in Scotland

One Size, W30cm x H45cm

This medium weight snood in soft lambswool is versatile, warm and practical, especially for outdoor sports and recreation. For women, men and children.



## Bowden Colour Block Stole

Style No: S4275

100% Merino Lambswool

Made in Scotland

One Size, 174cm x 70cm

An elegant and glorious addition to all wardrobes; as a shawl, a scarf, a wrap or a blanket to keep the cold at bay while adding a dash of colour. For women, men and families.

Bowden Snood and Stole are available in the following colourways:







## Bowden Rib Beret

Style No: H4264

100% Merino Lambswool

Made in Scotland

One Size

An attractive moving rib beret to complete each outfit. Matches all accessories and garments.

## Bowden Rib Open Mitt

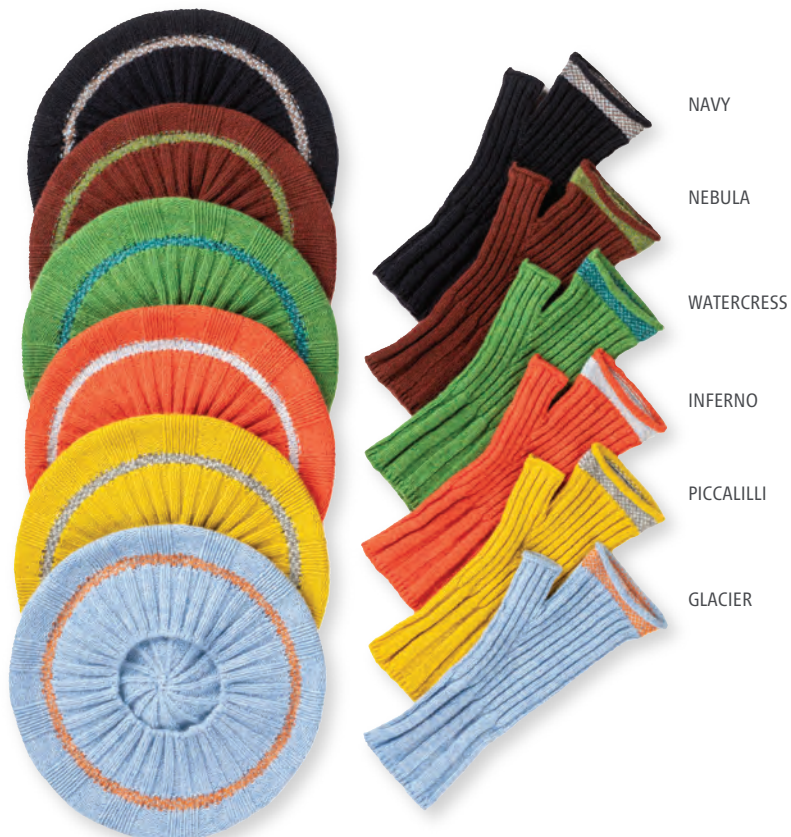
Style No: G4265

100% Merino Lambswool

Made in Scotland

One Size

Hard wearing rib open mitts with weave pattern detail. Fold back from fingers when active. Wear with the collection.















## Size Information

ERIBÉ uses size labels 'XS-XXL' but as a rough guide, these relate to national sizes (see below). We also offer 'split sizing' on certain styles, which fall between the two 'full' sizes, the wear of the smaller size is a snugger fit, and the larger is more relaxed.

### Womens

ERIBÉ SIZES	XS	S	M	L	XL	XXL
UK / AUS	6-8	8-10	10-12	12-14	14-16	16-18
EUROPEAN	36	38	40	42	44	46
US	4-6	6-8	8-10	10-12	12-14	14-16

### Mens

ERIBÉ SIZES	XS	S	M	L	XL	XXL
UK / AUS	36"	38"	40"	42"	46"	48"
EUROPEAN	44	46	48	52	54	56
US	36"	38"	40"	42"	46"	48"

### Slim Fit / Regular Fit / Relaxed Fit / Oversized

We offer a range of different fits dependent on individual styles, each with the approximate measurements as the charts below. Some styles will differ, such as 'longline' styles with added length. Due to the natural properties of wool, guideline for size, tolerance up to 2cm.

#### Women's Slim Fit

Styles: Alpine cardigan, Alpine Short Cardigan & Sweater, Alpine Zipper Cardigan, Corry Dress, Westray Vest.

ERIBÉ SIZES	XS	S	M	L	XL	XXL
CHEST WIDTH	41cm	44cm	47cm	50cm	53cm	56cm

#### Women's Regular Fit

Styles: Alpine Sweater, Alpine Roll Neck Sweater, Alpine Hoody Sweater, Corry Top, Corry Round Neck Cardigan, Corry V Neck Sweater, Herd Waistcoat & Jacket, Westray Cardigan & Sweater, Kinross Sweater, Kinross High Neck Sweater, Kinross Cardigan.

ERIBÉ SIZES	XS	S	M	L	XL	XXL
CHEST WIDTH	44cm	47cm	50cm	53cm	56cm	59cm

#### Women's Relaxed Fit

Alpine Breeze Sweater, Corry Raglan Sweater, Corry Sweater Dress, Corry Tank Top, Corry Hoody Sweater, Corry T-Shirt Sweater, Herd Raglan Sweater, Ecology Crew Neck Vest, Ecology Draw String Two Tone Sweater.

ERIBÉ SIZES	XS	S	M	L	XL	XXL
CHEST WIDTH	48cm	51cm	54cm	57cm	60cm	63cm

Please note: all size charts shown are a guideline only. For more detailed size guides, please refer to our new Trade Portal.



#### Men's Slim Fit

Styles: Brodie Vest, Bruar Vest.

ERIBÉ SIZES	XS	S	M	L	XL
CHEST WIDTH	46cm	48cm	51cm	54cm	58cm

#### Men's Regular Fit

Styles: Herd Raglan Sweater, Bruar Sweater, Eddie Sweater, Eddie Vest.

ERIBÉ SIZES	XS	S	M	L	XL	XXL
CHEST WIDTH	47cm	50cm	53cm	56cm	60cm	64cm

#### Men's Relaxed Fit

Styles: Herd Waistcoat, Ecology Draw String Sweater, Ecology Crew Neck Vest, Ecology Stand Neck Sweater, Stoneybrek Sweater, Brodie Sweater.

ERIBÉ SIZES	XS	S	M	L	XL	XXL
CHEST WIDTH	49cm	52cm	55cm	58cm	62cm	66cm

Mens Corry Raglan Sweater, Corry Hoody Sweater, Herd Jacket.

ERIBÉ SIZES	XS	S	M	L	XL
CHEST WIDTH	51cm	54cm	57cm	60cm	63cm





## Caring for your ERIBÉ Knitwear

ERIBÉ creates beautiful knitwear that is warm, soft and very special. We use only the finest natural yarns, most of them spun in Yorkshire, by people who, like us, have an inherited understanding of craftsmanship and a love for what they do.

It is perfectly normal that when you first wear a pure wool garment, loose fibres near the surface rub together during movement and form little balls of wool known as pilling or bobbling. We have put together this simple guide to help you beat the bobbles and keep your ERIBÉ garment looking fantastic for many years to come...



### Handwash is best

This is the gentlest way to wash your knitwear and the best way to avoid shrinkage and minimise pilling. Wash by hand in tepid water.



### Wash inside out

Any pilling caused by washing will be on the inside not the outside.



### Use liquid soap

Add a small amount of liquid hand soap and soak the garment in lukewarm water for 5 minutes. Never use regular washing detergent as this can damage the fibres.



### Squeeze, don't rub

To wash the garment you must gently squeeze, without rubbing, the garment in the water. Lay your damp garment on a large bath towel. Gently roll the towel and the garment together much like a Swiss roll to remove the excess water.



### Air dry flat

Pull gently to size and allow to dry flat on a clean towel away from direct heat sources such as radiators. When dry, press to shape using a damp towel or lightly steam by holding a steam iron just above the surface of the garment.



### Remove any pilling

When the garment is completely dry, gently remove the small pills either by hand or with a hand-held sweater comb or razor - NEVER use scissors. By doing this after each of the first 3-4 washes, you will find that the pilling subsides and will eventually disappear.



## Forward Ordering Deadline 2023

You may not know this, but most of our unique knitwear is knitted according to order. From order to delivery the process takes many months to complete as they are crafted by hand using high quality natural wools. We rely on our spinners to deliver all our many colours in time. For this reason, please place your order as early as possible to ensure we have space to knit especially for you. Our capacity is limited and we may need to close our order book early or to offer you a later delivery date than requested.

Due to our wide range of products and colours, we must restrict the products and colours for June delivery. For June delivery, please only order the colours and knitwear marked with a red dot.

All styles are available for delivery from July onwards.

Delivery dates and capacity do change. Please refer to our Trade Portal on our website for the most up-to-date information. Also, please sign up to receive our newsletter for updated product delivery windows, knitwear stories, photography and colour information and new opportunities beyond these dates.

2023 Order Deadline	
Receipt of Order Deadline with ERIBÉ	Delivery Slot (Please allow the whole month for delivery)
Sunday 19th February	June 2023 - Limited selection available only products marked with ● can be ordered for June, or items 'in stock' on our Trade Portal
Sunday 19th February	July onwards - all products available

For a 1st of the month delivery, please ask for end of the previous month delivery.

## — — — — — Working with ERIBÉ in 2023 — — — — —

- There is a minimum of 2 pcs per colour on all products ordered.
- £2000 / €2000 / \$5000 AUS minimum spend to order with us.
- New customers will be on proforma terms, but can move to 30-day credit terms following first year review.
- Payments must be made in the currency on the invoice, and to the corresponding bank account.
- Orders totalling over £2,500 / €3000 come with free carriage within the EU.
- Please double check our confirmation of your order. All customers have 7 days to check and amend their order, thereafter your order will be deemed accepted.
- Cancellations received after 8 working days from receipt of confirmation will incur a cancellation fee of 30% of order.

Please find our Terms and Conditions on the ERIBÉ Trade Portal / Website

## — — — — — How to contact ERIBÉ — — — — —

### HEAD OFFICE

Sales, Design, Marketing, Accounts,  
Showroom, Despatch

ERIBÉ Knitwear Ltd, Dingleton Road,  
Melrose, TD6 9QY Scotland, UK.

Sales enquiries: Tel: +44 (0)1896 755540

Email: sales@eribe.com

All other enquiries: Tel: +44 (0)1896 750952

### ERIBÉ Manufacturing - Woolly Towers

Unit 8g, Tweedside Park, Tweedbank,  
Galashiels, TD1 3TE Scotland, UK.

### EU Distribution Centre:

ERIBÉ Knitwear Limited Sp. z o.o. Oddział w Polsce  
ul. Nadrzeczna 50, 05-552 Wolka Kosowska, Polska (Poland)

Branch Manager: Elzbieta Pruszkowska-Sierzega (Ela)



# Placing an Order

Please contact [sales@eribe.com](mailto:sales@eribe.com) to get your sign in details and user guide for our new Trade Portal.  
View images of all styles and prices in your currency on your own private account.  
ERIBÉ stock information will be added soon, to help you top up when possible throughout the year.  
Please contact Shona or Sophie at [sales@eribe.com](mailto:sales@eribe.com) to discuss anything.

To place an order and for details on how to set up your  
own ERIBÉ Trade Portal account please contact:

Tel: +44 (0)1896 755540 Email: [sales@eribe.com](mailto:sales@eribe.com)

## Agents - UK, Europe and beyond



### **SOUTHERN ENGLAND**

Contact: Andy Nicholls  
Tel: 07967 096 734 Email: [andy@eribe.com](mailto:andy@eribe.com)



### **SPAIN / RAMON MONTIEL GOMEZ**

Contact: Ramon Montiel  
Address: c. Sepulveda, 185, 2-2a 08011 Barcelona, Spain  
Tel: (+34) 93 451 21 94 Mob: (+34) 670 09 38 77  
Email: [rmontiel740@gmail.com](mailto:rmontiel740@gmail.com)



### **SOUTH GERMANY / AGENTUR ELKE WIRICHS**

Contact: Elke Wirichs  
Address: Heinrich-Kley-Str. 12, 80807 München Schwabing, Germany  
Tel: +49 89 3230 8100 / Mob: +49 177 3236 627  
Email: [info@elke-wirichs.com](mailto:info@elke-wirichs.com) Website: [www.elke-wirichs.com](http://www.elke-wirichs.com)

### **NORTH GERMANY / WOLLAGENTEN - AGENTUR MUMME**

Contact: Carsten Mumme  
Address: Kaethe-Kollwitz-Str. 115, 04109 Leipzig, Germany  
Tel: +49 151 4190 5377 Email: [post@wollagenten.de](mailto:post@wollagenten.de)  
Website: [www.wollagenten.de](http://www.wollagenten.de)



### **AUSTRIA / FREE MOUNTAIN GmbH**

Contact: Andreas Schmied  
Address: Rupertgasse 4, 5020 Salzburg, Austria  
Tel: +43 662 876 108 / Mob: +43 664 2230 640  
Email: [office@freemountain.at](mailto:office@freemountain.at) Website: [www.freemountain.at](http://www.freemountain.at)



### **SWITZERLAND / THE FERRARI AGENCY**

Contact: Heidy and Peter Ferrari  
Address: Industriestrasse 57, 8152 Glattbrugg, Zurich, Switzerland  
Tel : +41 076 587 61 53 / Tel : +41 076 593 88 67  
Email: [theferrariagency@gmail.com](mailto:theferrariagency@gmail.com) Website: [www.theferrariagency.com](http://www.theferrariagency.com)



### **FRANCE / DBA SHOWROOM**

Contact: Agnès Beharel-Bazerli & Edouard Bazerli  
Address: 7, Rue D'Aboukir, 75002 Paris, France  
Tel: +33 (0) 142 369 908  
Agnès Mob: + 33 (0) 6 23 89 93 98 / Edouard Mob: + 33 (0) 6 09 47 76 64  
Email: [agnes.bbazerli@gmail.com](mailto:agnes.bbazerli@gmail.com) Email: [ebazerli@gmail.com](mailto:ebazerli@gmail.com)  
Website: [www.dbashowroom.com](http://www.dbashowroom.com)



### **THE NETHERLANDS / MAAK! Fashion Agency**

Contact: Lucas Hubrecht  
Address: Rietgrachtstraat 30, 6828 KD Arnhem (Nederland)  
Tel: +31 (0) 644 100 659 Email: [info@maakagency.nl](mailto:info@maakagency.nl)  
Website: [www.maakagency.nl](http://www.maakagency.nl)



### **ITALY / HEDA SHOWROOM**

Contact: Alessandro Zanardi / Daniele Zanardi / Chiara Alfieri  
Tel: +39 02-54123995 Mob: +39 345 7079447  
Address: Heda Showroom, Via Piercandido Decembrio 31 Milano  
Email: [showroom@heda.it](mailto:showroom@heda.it) Website: [www.modemonline.com](http://www.modemonline.com)



### **AUSTRALIA & NEW ZEALAND / LE BUREAU FASHION MARKETING**

Contact: Kim Amber Rossouw  
Address: Suite 7, 112 McEvoy Street, Alexandria, NSW 2015, Sydney  
Tel: +61 (02) 96984450 / Mob: +61 (0) 407227659  
Email: [kim@lebureauofashion.com](mailto:kim@lebureauofashion.com)  
Website: [www.lebureauofashion.com](http://www.lebureauofashion.com)



### **CHINA**

### **THE ENGINEER & SPIRIT / Qingxian Clothing Trading Co. Ltd**

Contact: Jacky Tel: +86 13958110436  
Address: TangShang 433, HangZhouCity, China  
Email: [jacky@engineerclothing.com](mailto:jacky@engineerclothing.com)  
Website: [www.engineerclothing.com](http://www.engineerclothing.com)





ERIBÉ®  
KNITWEAR DESIGN • SCOTLAND

Dingleton Road, Melrose, Scottish Borders, UK TD6 9QY

Tel: +44 (0)1896 750952 [www.eribe.com](http://www.eribe.com)

